

Quarterly Tables of Unemployment in Tyne & Wear: April 2011



Published: May 2011
EU11/05a

Labour Force Survey (LFS) Estimates

Labour Force Survey (LFS) estimates, particularly for the North East and Tyne and Wear, are subject to sampling variability¹. The following therefore gives the *probable* direction of change:

UK

- In the 3 months to March 2011, UK unemployment fell by 36,000² to 2.46m. The unemployment rate fell by 0.1 percentage points (pp) to reach 7.7%, it was also down 0.3pp from a year earlier (LFS estimate, seasonally adjusted).
- The LFS shows a rise in the number of people in employment, up 118,000 on the quarter to March 2011 and up 416,000 on a year earlier. The employment rate (aged 16-64) was 70.7%, up 0.2pp on the quarter and 0.4pp on the year.
- The number of workforce jobs in the UK was up on the quarter to December 2010 by 77,000 (+0.2%) and by 20,000 on a year earlier (+0.1%). The sector with the largest quarterly increase was human health and social work activities, up 46,000.

North East

- The North East unemployment rate in the quarter to March 2011 was 10.4%, up 0.8pp on a year earlier.
- The North East employment rate was 65.5% in the three months to March 2011, down -1.2pp on a year earlier

(UK and North East LFS estimates are seasonally adjusted.)

Tyne and Wear

- **For the 12 months to September 2010, TW's estimated unemployment was 57,300 or 10.6% (unadjusted)** (Table 5).

(12-month averages from the APS, rather than 3-month averages, give more robust unemployment rates.)

NEW: ONS have issued new modelled estimates of (ILO) unemployment for Parliamentary Constituencies (as well as LA Districts). These are experimental statistics. The estimates will be updated quarterly. The latest estimates are available on the ONS website: (http://www.statistics.gov.uk/downloads/theme_labour/Model_Based_Unemployment_Data.xls).

Claimant Count:

- **In the UK, the seasonally adjusted (s.a.) claimant count rose by 12,400 in April 2011 (+0.9%), to reach 1.47 million.** From a year ago, the UK s.a. claimant count is down by -46,000 (-3.0%). (The claimant count measures the number of people claiming Jobseekers Allowance.) (Table 1).
- **The North East seasonally adjusted claimant count was 82,500 in April 2011**, up 1,900 on March (Table 1). The North East has the highest regional rate in GB (6.7%), equal to Northern Ireland. The next highest rate is the West Midlands (5.8%). The South East has the lowest regional rate (2.9%). The North East rate increased by 0.2pp, on the previous month, the largest regional rise. (All seasonally adjusted).

Note: seasonally adjusted claimant count data in this broadsheet are provisional and are revised by ONS the following month.

¹ Two sample surveys of the same population can produce different results. ONS provide survey results with a 95% confidence interval. This means that for a given population 95% of surveys would give results within that confidence interval. For the UK the quarterly unemployment rate is accurate to ± 0.3 percentage points; the quarterly employment rate is accurate to ± 0.4 pp. For the North East the quarterly unemployment rate is accurate to ± 1.3 percentage points; the quarterly employment rate is accurate to ± 1.8 pp.

² The estimate of change is only accurate to $\pm 81,000$.

The claimant count reports numbers qualifying for benefits as a result of unemployment and is subject to the associated administrative system.

	Total	Rate %	Change since previous:			
			Month	%	Year	%
North East Region	82,500	6.7 (w)	1,900	2.4	1,400	1.7
Great Britain	1,409,400	4.5 (w)	12,200	0.9	-49,600	-3.4
United Kingdom	1,468,600	4.6 (w)	12,400	0.9	-46,000	-3.0

Source: Office for National Statistics

Notes:

* The seasonally adjusted series takes account of previous changes which have affected the unemployment count so that the whole series over time is consistent with current figures. Seasonally adjusted figures are not available below regional level. Claimants aged under 18 are excluded. Figures in this table are provisional.

The national and regional claimant count rates in Table 1 are the number of unemployed as a percentage of the estimated total workforce (the sum of unemployed claimants, employees in employment, self-employed, HM Forces and participants on work-related government training programmes), at mid-2010.

In January 2003, the Office for National Statistics (ONS) withdrew workforce-based claimant count rates for sub-regional areas, however, they remain available for regions and countries. The workforce-based rates, below regions, were replaced with a new residence-based measure. The claimant count, as a 'proportion' of the resident population (aged 16 - 64), are given in Table 3 and are named 'claimant count proportions'.

TWRI's residence-based rates (which use the economically active as the denominator) are given in Table 2 (overleaf).

Table 2: National, Regional and Local Claimant Count* and Change, Unadjusted: April 2011

	Male	Rate%	Female	Rate%	Total	Rate%	Change since previous month:		Change since previous year:	
							Number	%	Number	%
Gateshead	4,392	9.2 R	1,897	4.5 R	6,289	7.0 R	280	4.7	153	2.5
Newcastle	6,393	9.0 R	2,715	4.5 R	9,108	6.9 R	342	3.9	306	3.5
North Tyneside	4,471	8.6 R	1,837	3.9 R	6,308	6.4 R	196	3.2	450	7.7
South Tyneside	4,103	10.5 R	1,929	5.8 R	6,032	8.4 R	121	2.0	-301	-4.8
Sunderland	6,583	9.3 R	3,087	4.9 R	9,670	7.2 R	193	2.0	-87	-0.9
Tyne and Wear	25,942	9.2 R	11,465	4.7 R	37,407	7.1 R	1,132	3.0	521	1.4
North East	59,064	8.8 W	25,546	4.5 W	84,610	6.8 W	705	0.8	1,383	1.7
Great Britain	990,917	5.9 W	470,727	3.3 W	1,461,644	4.7 W	-5,341	-0.4	-50,634	-3.3
United Kingdom	1,034,182	6.0 W	486,624	3.3 W	1,520,806	4.7 W	-6,140	-0.4	-47,322	-3.0

Source: Office for National Statistics, Tyne and Wear Research and Information

Notes:

* Count of claimants of Jobseekers' Allowance

R = Residence-based. District and county claimant count rates are the number of unemployed as a percentage of the estimated labour force (the economically active population aged 16-64), mid-2009 (TWRI estimates are based on ONS population estimates). The new denominators, introduced with the February 2011 data, include Females aged 60-64. Previous EA denominators used Male 16-64, Female 16-59).

W = Workforce-based. National and regional claimant count rates are the number of unemployed as a percentage of the estimated total workforce (the sum of unemployed claimants, employees in employment, self-employed, HM Forces and participants on work-related government training programmes), at mid-2010.

Caution:

District and Tyne & Wear numbers in Table 2 are calculated using current (2004) wards. These numbers may vary slightly from figures extracted direct from NOMISWEB, which are based on 1991 wards and are no longer in complete alignment with current Tyne & Wear boundaries.

Table 3: National, Regional and Local Claimant Count*, Unadjusted: April 2011

(Resident PWA-based proportions)

	Male	Percentage of population #	Female	Percentage of population #	Total	Percentage of population #
Gateshead	4,392	7.2	1,897	3.1	6,289	5.1
Newcastle	6,393	6.9	2,715	3.0	9,108	4.9
North Tyneside	4,471	7.1	1,837	2.9	6,308	5.0
South Tyneside	4,103	8.5	1,929	4.0	6,032	6.2
Sunderland	6,583	7.2	3,087	3.3	9,670	5.3
Tyne and Wear	25,942	7.3	11,465	3.2	37,407	5.2
North East Region	59,064	7.0	25,546	3.0	84,610	5.0
Great Britain	990,917	5.1	470,727	2.4	1,461,644	3.7
United Kingdom	1,034,182	5.2	486,624	2.4	1,520,806	3.8

Source: Office for National Statistics, Tyne and Wear Research and Information

Notes:

* Count of claimants of Jobseekers' Allowance

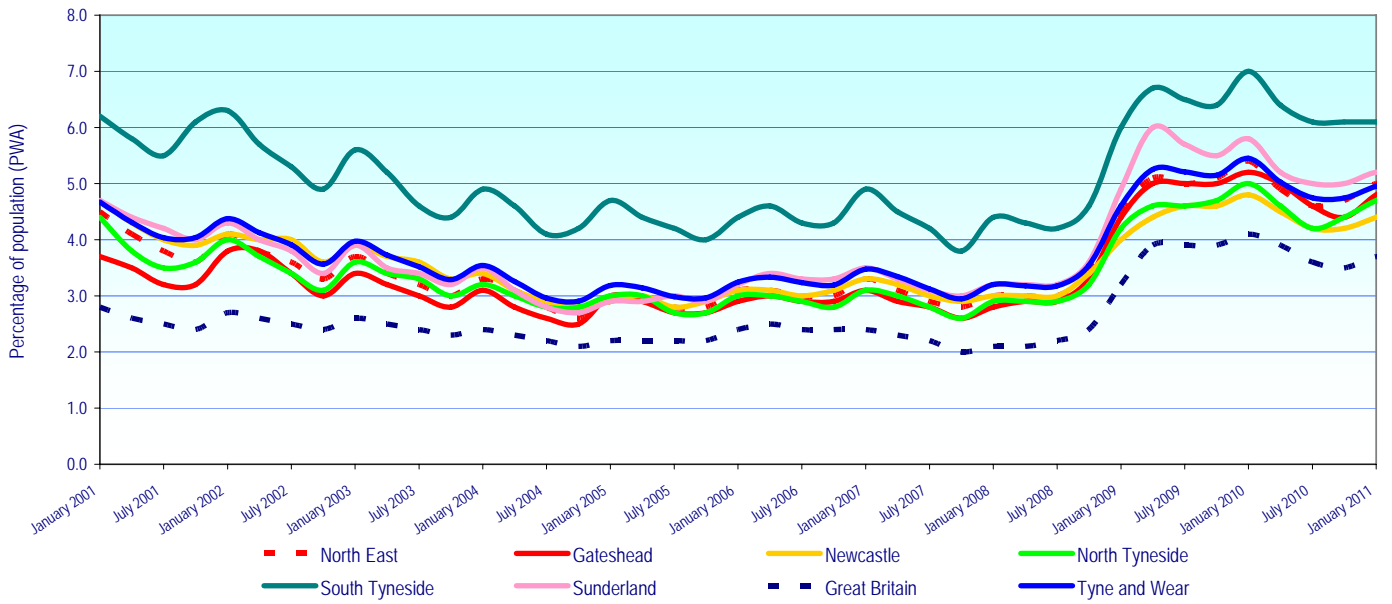
District and Tyne and Wear numbers in Table 3 are calculated using current (2004) wards. These numbers may vary slightly from figures extracted direct from NOMISWEB, which are based on 1991 wards.

Claimant count figures given in Table 3 are expressed as a proportion of the resident population of working age (16-64). In order to ensure consistency with District and Tyne and Wear boundaries, the population of working age (PWA) figures are calculated using the mid-2007 resident population aged 16-64 (sum of CAS wards population of working age figures).

The percentage figures in Table 3 are referred to as 'proportions' to distinguish them from the workforce-based rates, which are available at region/country level. On average, the 'proportions' are around a fifth smaller than the workforce rates, due to the wider denominators.

Note: From July 2010 data, the denominators have been widened to age 64. Previously, for women it was up to age 59. This new wider definition of the population of working age (PWA) has reduced the claimant count proportion for women by about 0.3pp (or about a tenth) and that for totals by about 0.2pp.

Figure 1: Claimant Count Proportions



Source: Office for National Statistics

Notes:

Claimant count proportions (residence-based proportions of 16-64Population) are given for January, April, July and October.

Caution:

Not seasonally adjusted, so shows seasonal rises normally in January.

Table 4: National, Regional and Local Benefit Claimants						
Benefit Claimants - working age client group* November 2010						
	% of PWA		% of PWA		% of PWA	
	Male	#	Female	#	Total	#
Gateshead	12,940	21.2	10,690	17.3	23,630	19.3
Newcastle	17,860	19.2	15,010	16.4	32,870	17.8
North Tyneside	11,600	18.5	9,850	15.3	21,450	16.9
South Tyneside	11,290	23.4	9,470	19.4	20,770	21.4
Sunderland	20,430	22.4	17,270	18.6	37,700	20.5
Tyne and Wear	74,130	20.8	62,280	17.3	136,410	19.1
North East Region	169,080	20.2	144,660	17.1	313,740	18.6
Great Britain	2,918,660	15.0	2,750,710	14.1	5,669,370	14.5
Employment and Support Allowance Claimants** November 2010						
	% of PWA		% of PWA		% of PWA	
	Male	#	Female	#	Total	#
Gateshead	1,490	2.4	1,080	1.7	2,560	2.1
Newcastle	2,160	2.3	1,560	1.7	3,720	2.0
North Tyneside	1,300	2.1	1,090	1.7	2,390	1.9
South Tyneside	1,240	2.6	950	1.9	2,190	2.3
Sunderland	2,370	2.6	1,670	1.8	4,040	2.2
Tyne and Wear	8,560	2.4	6,350	1.8	14,910	2.1
North East Region	18,480	2.2	13,720	1.6	32,200	1.9
Great Britain	332,900	1.7	261,030	1.3	593,930	1.5
Incapacity/Severe Disablement Allowance*** November 2010						
	% of PWA		% of PWA		% of PWA	
	Male	#	Female	#	Total	#
Gateshead	3,620	5.9	2,020	3.3	5,640	4.6
Newcastle	4,270	4.6	2,350	2.6	6,630	3.6
North Tyneside	2,950	4.7	1,870	2.9	4,820	3.8
South Tyneside	2,880	6.0	1,490	3.1	4,370	4.5
Sunderland	5,970	6.5	3,520	3.8	9,490	5.2
Tyne and Wear	19,700	5.5	11,250	3.1	30,950	4.3
North East Region	47,080	5.6	28,280	3.3	75,360	4.5
Great Britain	730,270	3.8	490,950	2.5	1,221,220	3.1

Source: Department for Work and Pensions

Over the period from August 2008, in Tyne and Wear, Benefit Claimants (Working age Client Group) were up by 6,180 (or up +4.7%). ESA claimants reached 14,910 – which explains the -10,700 (-25.7%) fall in IB/SDA numbers.

For information: Data for August 2008 is the last quarterly snapshot before the introduction of the new ESA (Employment and Support Allowance) which replaced Incapacity Benefit for new claimants from Oct. 2008.

Notes Overleaf:

The data are based on 100% of claims so are not subject to any sampling error. Figures are rounded to the nearest 10, and those below 5 are suppressed as statistically unreliable.

Data relate to a single point in time and provide a snapshot of claims at that point. Data are not seasonally adjusted.

- * Benefit claimants – working age client group includes benefit claimants aged 16-64 years, on Income Support (IS) only, Job Seekers Allowance (JSA) only, Incapacity Benefit (IB) only, IS and IB, DLA and IB, DLA, IS and IB, Disability Living Allowance (DLA) only, DLA, IS and SDA, DLA and IS, DLA and SDA, IS and SDA, Severe Disablement Allowance (SDA) only, DLA and JSA, other combinations. Data includes all durations and all family types.
- ** The figures relating to Employment Support Allowance have been thoroughly quality assured to National Statistics standard; however it should be noted that this is a new benefit using a new data source which may not have reached steady state in terms of operational processing. Hence most recent data shown is provisional. Tyne and Wear fig. is sum of districts. GB fig. is sum of GORs (regions).
- *** Count of those in receipt of Incapacity Benefit or Severe Disablement Allowance, aged 16-64, for all durations.
- # Benefit claimant count figures given in Table 4 are expressed as a proportion of the resident population of working age (16-64). In order to ensure consistency with District and Tyne and Wear boundaries, the population of working age (PWA) figures are derived from the mid-2001 population estimates (sum of CAS wards population of working age figures).

INTERNATIONAL LABOUR ORGANISATION (ILO) MEASURE OF UNEMPLOYMENT

The ILO definition of unemployment refers to people “without a job who were available to start work in the two weeks following their LFS interview and had looked for work in the four weeks prior to interview (or were waiting to take up a job they had already obtained)”. This has been the official, government, definition of unemployment since 1998.

Note: the estimates of District unemployment rates can be particularly volatile, with confidence intervals of about plus or minus 3 percentage points.

**Table 5: National, Regional and Local ILO Unemployment, Unadjusted:
12 months Oct 2009-Sep 2010**

	<u>Male</u>	<u>%</u>	<u>Confidence*</u>	<u>Female</u>	<u>%</u>	<u>Confidence*</u>	<u>Total</u>	<u>%</u>	<u>Confidence*</u>
Gateshead	5,200	10.5	3.1	4,100	9.2	2.9	9,200	9.9	2.1
Newcastle	10,100	13.3	3.4	3,200	5.0	2.3	13,300	9.5	2.1
North Tyneside	6,100	11.5	3.0	3,600	7.2	2.4	9,700	9.4	1.9
South Tyneside	7,000	18.5	3.8	2,500	7.5	2.6	9,600	13.3	2.4
Sunderland	9,500	13.0	3.2	6,100	9.9	3.0	15,600	11.6	2.2
Tyne and Wear	37,900	13.1	1.5	19,400	7.7	1.2	57,300	10.6	1.0
North East Region	78,000	11.8	0.9	44,100	7.6	0.8	122,100	9.9	0.6
Great Britain	1,404,700	8.8	0.2	910,700	6.7	0.2	2,315,400	7.8	0.1

Notes:

These unemployment estimates (by ONS) are from its Annual Population Survey (APS), drawn from 12 months' data.

The unemployment rate is the number of unemployed people aged 16 to 64 expressed as a percentage of the economically active population aged 16 to 64.

*Estimates are presented with an indication of their reliability, in the form of approximate 95% confidence intervals. For example, an LFS estimate and confidence interval of 6.7% +/-0.7%, means that there is 95% confidence that the true rate would be between 6.0% and 7.4%. Only in exceptional circumstances would the true rate be outside the confidence interval. The narrower the confidence interval, means the more reliable the estimate.

APS estimates are rounded to the nearest 100 by ONS. Formerly, ONS' LFS estimates were rounded to the nearest 1,000. The annual Labour Force Survey (LFS) is now incorporated into the Annual Population Survey (APS). ONS publish estimates each quarter, although all these estimates are drawn from 12 months' data. LFS - quarterly: four quarter averages are no longer updated.

Previously Table 5 showed the number of unemployed females aged 16-59.

Appendix 1: Claimant Count Statistics Current (2004) Wards

April 2011

Ward	FLOWS		CLAIMANT UNEMPLOYMENT					
	onto regr	off regr	Male	%*	Female	%*	Total	%*
Birtley	64	43	148	7.2	66	3.5	214	5.4
Blaydon	71	69	231	9.8	126	5.8	357	7.9
Bridges	94	73	327	15.1	97	6.4	424	11.5
Chopwell and Rowlands Gill	59	55	198	8.8	90	4.4	288	6.7
Chowdene	60	47	182	8.2	91	4.7	273	6.6
Crawcrook and Greenside	36	40	92	3.8	44	2.1	136	3.0
Deckham	111	85	277	12.9	148	7.7	425	10.4
Dunston and Teams	93	94	317	14.6	128	7.1	445	11.2
Dunston Hill and Whickham East	47	40	101	4.5	53	2.6	154	3.6
Felling	122	81	361	21.1	163	10.8	524	16.3
High Fell	99	77	302	16.1	123	7.6	425	12.2
Lamesley	62	40	162	8.2	77	4.5	239	6.5
Lobley Hill and Bensham	109	83	305	13.5	108	5.1	413	9.5
Low Fell	25	31	71	3.0	23	1.1	94	2.1
Pelaw and Heworth	71	58	166	7.9	75	4.0	241	6.0
Ryton, Crookhill and Stella	49	45	144	7.3	59	3.1	203	5.2
Saltwell	95	78	280	12.7	123	6.6	403	9.9
Wardley and Leam Lane	46	32	139	6.4	61	3.1	200	4.9
Whickham North	57	46	142	6.5	67	3.6	209	5.2
Whickham South and Sunnyside	40	32	76	3.3	40	1.9	116	2.6
Windy Nook and Whitehills	76	52	219	9.1	88	4.3	307	6.9
Winlaton and High Spen	37	29	152	7.2	47	2.5	199	5.0
GATESHEAD	1,523	1,230	4,392	9.2	1,897	4.5	6,289	7.0
Benwell and Scotswood	141	149	388	12.2	202	6.8	590	9.6
Blakelaw	112	75	284	9.7	123	5.1	407	7.6
Byker	160	160	539	18.9	242	10.0	781	14.8
Castle	58	44	153	5.1	56	2.0	209	3.7
Dene	40	40	72	2.5	34	1.3	106	2.0
Denton	101	74	213	7.9	94	4.1	307	6.1
East Gosforth	25	29	76	2.9	30	1.2	106	2.1
Elswick	230	180	632	18.5	221	9.8	853	15.1
Fawdon	113	88	276	11.3	121	5.7	397	8.7
Fenham	89	71	221	7.8	109	4.7	330	6.4
Kenton	105	87	323	11.7	148	6.2	471	9.2
Lemington	81	74	201	7.3	101	4.0	302	5.7
Newburn	59	60	190	7.7	71	3.1	261	5.5
North Heaton	62	49	119	4.5	63	2.7	182	3.7
North Jesmond	19	18	66	2.5	25	1.2	91	1.9
Ouseburn	99	82	261	9.1	84	3.6	345	6.7
Parklands	35	18	67	2.5	42	1.8	109	2.1
South Heaton	124	77	266	9.4	109	5.1	375	7.5
South Jesmond	33	31	98	4.0	47	2.3	145	3.2
Walker	181	140	600	24.0	223	11.7	823	18.7
Walkergate	86	79	315	12.3	125	5.7	440	9.3
Westerhope	45	47	96	4.0	35	1.7	131	2.9
Westgate	104	100	323	13.8	125	6.5	448	10.5
West Gosforth	32	17	72	2.6	37	1.6	109	2.1
Wingrove	101	78	307	10.3	129	5.9	436	8.4
Woolsington	98	66	235	8.9	119	5.1	354	7.2
NEWCASTLE	2,333	1,933	6,393	9.0	2,715	4.5	9,108	6.9

Source: Office for National Statistics, Tyne and Wear Research and Information

Notes: * Rates are the number of unemployed as a percentage of the estimated labour force (the economically active population, aged 16-64), at mid-2009 (TWRI ests. based on ONS population estimates).

April 2011

Ward	FLOWS		CLAIMANT UNEMPLOYMENT					
	onto regr	off regr	Male	%*	Female	%*	Total	%*
Battle Hill	71	61	243	8.2	94	3.5	337	6.0
Benton	47	56	140	5.5	59	2.5	199	4.0
Camperdown	92	90	216	7.6	94	3.6	310	5.7
Chirton	161	112	473	16.5	191	7.5	664	12.3
Collingwood	84	64	277	10.5	124	5.4	401	8.1
Cullercoats	35	26	119	5.3	47	2.3	166	3.9
Howdon	105	98	380	13.9	160	7.0	540	10.7
Killingworth	64	49	150	5.0	68	2.6	218	3.9
Longbenton	79	72	247	10.3	97	4.1	344	7.2
Monkseaton North	35	35	89	3.6	38	1.6	127	2.6
Monkseaton South	40	32	120	4.9	61	2.6	181	3.8
Northumberland	57	48	156	6.6	78	3.7	234	5.2
Preston	35	40	102	4.2	59	2.6	161	3.5
Riverside	122	111	531	18.7	216	9.2	747	14.4
St Mary's	18	24	61	2.9	14	0.8	75	1.9
Tynemouth	60	44	155	5.8	77	3.0	232	4.4
Valley	59	48	201	7.4	97	4.0	298	5.8
Wallsend	103	67	460	15.9	125	4.9	585	10.7
Weetslade	58	35	136	5.7	61	2.7	197	4.2
Whitley Bay	70	52	215	8.4	77	3.2	292	5.9
NORTH TYNESIDE	1,395	1,164	4,471	8.6	1,837	3.9	6,308	6.4
Beacon and Bents	182	132	386	16.0	195	10.4	581	13.6
Bede	97	81	240	11.8	98	5.8	338	9.1
Biddick and All Saints	124	123	349	17.1	199	10.9	548	14.2
Boldon Colliery	83	86	210	8.2	99	4.4	309	6.4
Cleadon and East Boldon	23	25	59	2.6	30	1.5	89	2.1
Cleadon Park	83	70	182	12.3	96	7.2	278	9.9
Felgate and Hedworth	86	71	231	11.0	92	5.1	323	8.2
Harton	80	96	203	9.5	91	5.0	294	7.4
Hebburn North	82	76	253	10.5	119	5.7	372	8.3
Hebburn South	68	64	173	8.4	80	4.5	253	6.6
Horsley Hill	74	74	181	8.5	107	5.9	288	7.3
Monkton	88	72	238	11.0	101	5.3	339	8.4
Primrose	103	99	304	14.7	121	7.0	425	11.2
Simonside and Rekendyke	150	128	381	16.3	182	10.3	563	13.7
Westoe	78	64	170	6.9	74	3.7	244	5.4
West Park	84	79	187	7.9	80	4.0	267	6.1
Whitburn and Marsden	47	46	129	7.0	50	3.2	179	5.3
Whiteleas	98	77	227	10.3	115	6.3	342	8.5
SOUTH TYNESIDE	1,630	1,463	4,103	10.5	1,929	5.8	6,032	8.4

Source: Office for National Statistics, Tyne and Wear Research and Information

Notes: * Rates are the number of unemployed as a percentage of the estimated labour force (the economically active population, aged 16-64), at mid-2009 (TWRI ests. based on ONS population estimates).

April 2011

Ward	FLOWS		CLAIMANT UNEMPLOYMENT					
	onto		Male	%*	Female	%*	Total	%*
	regr	off regr						
Barnes	85	68	191	6.8	96	3.8	287	5.4
Castle	93	106	283	9.6	145	6.0	428	8.0
Copt Hill	101	98	195	6.9	101	4.2	296	5.6
Doxford	75	64	162	5.6	94	3.7	256	4.7
Fulwell	50	47	114	3.9	56	2.1	170	3.0
Hendon	215	179	727	27.8	240	10.5	967	19.7
Helton	94	85	217	7.9	106	4.8	323	6.5
Houghton	91	87	213	7.5	78	3.1	291	5.4
Millfield	141	108	311	10.6	133	5.4	444	8.2
Pallion	115	132	394	16.4	181	8.6	575	12.8
Redhill	136	133	350	12.6	175	7.4	525	10.3
Ryhope	91	70	190	7.2	129	5.4	319	6.3
St Anne's	103	86	323	12.3	136	5.6	459	9.1
St Chad's	77	64	191	8.6	101	4.8	292	6.7
St Michael's	100	90	245	8.3	99	4.0	344	6.3
St Peter's	78	83	204	6.7	94	3.7	298	5.3
Sandhill	114	91	332	13.1	155	7.0	487	10.2
Shiney Row	90	94	222	6.9	96	3.3	318	5.1
Silksworth	95	90	266	9.9	118	4.6	384	7.3
Southwick	121	107	356	14.6	174	8.4	530	11.7
Washington Central	61	65	184	5.9	91	3.1	275	4.5
Washington East	84	58	196	6.1	103	3.6	299	4.9
Washington North	137	105	352	11.4	206	7.8	558	9.8
Washington South	72	74	151	4.5	75	2.6	226	3.6
Washington West	97	69	214	6.6	105	3.7	319	5.2
SUNDERLAND	2,516	2,253	6,583	9.3	3,087	4.9	9,670	7.2
TYNE AND WEAR	9,397	8,043	25,942	9.2	11,465	4.7	37,407	7.1

Source: Office for National Statistics, Tyne and Wear Research and Information

Notes: * Rates are the number of unemployed as a percentage of the estimated labour force (the economically active population, aged 16-64), at mid-2009 (TWRI ests. based on ONS population estimates).