

Tables of Unemployment in Tyne & Wear: November 2010



Published: December 2010
EU10/12a

The claimant count reports numbers qualifying for benefits as a result of unemployment and is subject to the associated administrative system.

**Table 1: Change in Total Claimant Count: Seasonally Adjusted*:
November 2010**

(Workforce rates)[#]

| | Total | Rate % | Change since previous: | | | |
|-------------------|-----------|---------|------------------------|------|----------|-------|
| | | | Month | % | Year | % |
| North East Region | 80,900 | 6.6 (w) | -200 | -0.2 | -6,100 | -7.0 |
| Great Britain | 1,404,200 | 4.4 (w) | -1,300 | -0.1 | -161,300 | -10.3 |
| United Kingdom | 1,462,700 | 4.5 (w) | -1,200 | -0.1 | -156,700 | -9.7 |

Source: Office for National Statistics

Notes:

* The seasonally adjusted series takes account of previous changes which have affected the unemployment count so that the whole series over time is consistent with current figures. Seasonally adjusted figures are not available below regional level. Claimants aged under 18 are excluded. Figures in this table are provisional.

The national and regional claimant count rates in Table 1 are the number of unemployed as a percentage of the estimated total workforce (the sum of unemployed claimants, employees in employment, self-employed, HM Forces and participants on work-related government training programmes), at mid-2009.

In January 2003, the Office for National Statistics (ONS) withdrew workforce-based claimant count rates for sub-regional areas, however, they remain available for regions and countries. The workforce-based rates, below regions, were replaced with a new residence-based measure. The claimant count, as a 'proportion' of the resident population (aged 16 - 64), are given in Table 3 and are named 'claimant count proportions'. TWRI's residence-based rates (which use the economically active as the denominator) are given in Table 2 (overleaf).

Table 2: National, Regional and Local Claimant Count* and Change, Unadjusted: November 2010

| | Male | Rate% | Female | Rate% | Total | Rate% | Change since previous month: | | Change since previous year: | |
|-----------------------|----------------|--------------|----------------|--------------|------------------|--------------|---------------------------------|-------------|--------------------------------|--------------|
| | | | | | | | Number | % | Number | % |
| Gateshead | 3,898 | 8.3 R | 1,556 | 3.9 R | 5,454 | 6.3 R | -14 | -0.3 | -547 | -9.1 |
| Newcastle | 5,923 | 8.9 R | 2,334 | 4.3 R | 8,257 | 6.8 R | -101 | -1.2 | -431 | -5.0 |
| North Tyneside | 4,112 | 8.0 R | 1,552 | 3.5 R | 5,664 | 5.9 R | 30 | 0.5 | -108 | -1.9 |
| South Tyneside | 4,154 | 10.9 R | 1,714 | 5.6 R | 5,868 | 8.5 R | -196 | -3.2 | -534 | -8.3 |
| Sunderland | 6,497 | 9.3 R | 2,714 | 4.6 R | 9,211 | 7.2 R | -71 | -0.8 | -1,107 | -10.7 |
| Tyne and Wear | 24,584 | 9.0 R | 9,870 | 4.3 R | 34,454 | 6.9 R | -352 | -1.0 | -2,727 | -7.3 |
| North East | 56,502 | 8.5 W | 21,983 | 4.0 W | 78,485 | 6.4 W | -275 | -0.3 | -6,157 | -7.3 |
| Great Britain | 944,128 | 5.5 W | 412,311 | 2.8 W | 1,356,439 | 4.3 W | -2,843 | -0.2 | -160,468 | -10.6 |
| United Kingdom | 986,472 | 5.6 W | 426,793 | 2.9 W | 1,413,265 | 4.3 W | -3,520 | -0.2 | -156,181 | -10.0 |

Source: Office for National Statistics, Tyne and Wear Research and Information

Notes:

* Count of claimants of Jobseekers' Allowance

R = Residence-based. District and county claimant count rates are the number of unemployed as a percentage of the estimated labour force (the economically active population), mid-2007 (TWRI ests based on ONS population ests and are Male 16-64, Female 16-59). These are new denominators from May 2009 data.

W = Workforce-based. National and regional claimant count rates are the number of unemployed as a percentage of the estimated total workforce (the sum of unemployed claimants, employees in employment, self-employed, HM Forces and participants on work-related government training programmes), at mid-2009.

Caution:

District and Tyne & Wear numbers in Table 2 are calculated using current (2004) wards. These numbers may vary slightly from figures extracted direct from NOMISWEB, which are based on 1991 wards and are no longer in complete alignment with current Tyne & Wear boundaries.

Table 3: National, Regional and Local Claimant Count*, Unadjusted: November 2010

(Resident PWA-based proportions)

| | Male | Percentage of population # | Female | Percentage of population # | Total | Percentage of population # |
|--------------------------|----------------|----------------------------------|----------------|----------------------------------|------------------|----------------------------------|
| Gateshead | 3,898 | 6.4 | 1,556 | 2.5 | 5,454 | 4.4 |
| Newcastle | 5,923 | 6.4 | 2,334 | 2.5 | 8,257 | 4.5 |
| North Tyneside | 4,112 | 6.6 | 1,552 | 2.4 | 5,664 | 4.5 |
| South Tyneside | 4,154 | 8.6 | 1,714 | 3.5 | 5,868 | 6.1 |
| Sunderland | 6,497 | 7.1 | 2,714 | 2.9 | 9,211 | 5.0 |
| Tyne and Wear | 24,584 | 6.9 | 9,870 | 2.7 | 34,454 | 4.8 |
| North East Region | 56,502 | 6.7 | 21,983 | 2.6 | 78,485 | 4.7 |
| Great Britain | 944,128 | 4.9 | 412,311 | 2.1 | 1,356,439 | 3.5 |
| United Kingdom | 986,472 | 4.9 | 426,793 | 2.1 | 1,413,265 | 3.5 |

Source: Office for National Statistics, Tyne and Wear Research and Information

Notes:

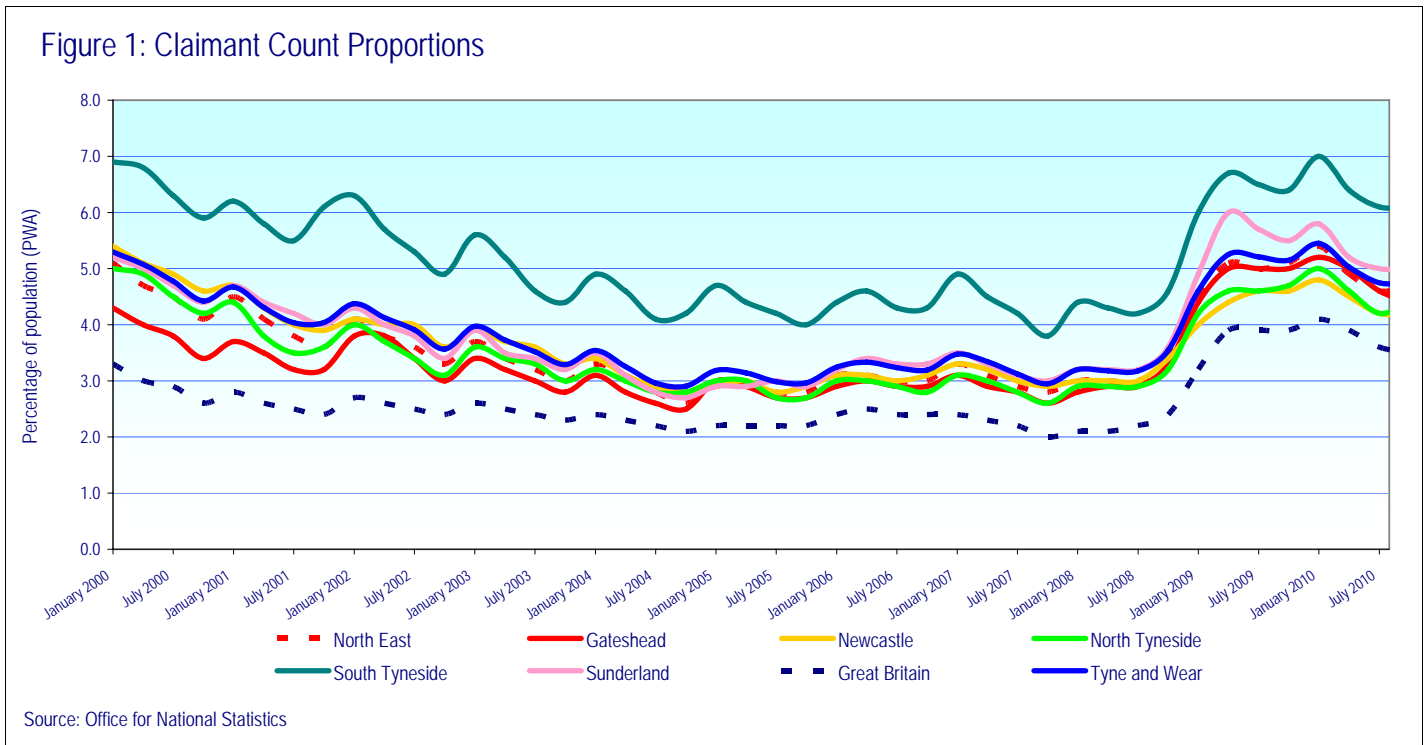
* Count of claimants of Jobseekers' Allowance

District and Tyne & Wear numbers in Table 3 are calculated using current (2004) wards. These numbers may vary slightly from figures extracted direct from NOMISWEB, which are based on 1991 wards.

Claimant count figures given in Table 3 are expressed as a proportion of the resident population of working age (16-64). In order to ensure consistency with District and Tyne & Wear boundaries, the population of working age (PWA) figures are calculated using the mid-2007 resident population aged 16-64 (sum of CAS wards population of working age figures).

The percentage figures in Table 3 are referred to as 'proportions' to distinguish them from the workforce-based rates, which are available at region/country level. On average, the 'proportions' are around a fifth smaller than the workforce rates, due to the wider denominators.

Note: From July 2010 data, the denominators have been widened to age 64. Previously, for women it was up to age 59. This new wider definition of the population of working age (PWA) has reduced the claimant count proportion for women by about 0.3pp (or about a tenth) and that for totals by about 0.2pp.



Notes:

Claimant count proportions (residence-based proportions of 16-64Population) are given for January, April, July and October.

Caution:

Not seasonally adjusted, so shows seasonal rises normally in January.

| | Benefit Claimants - working age client group* May 2010 | | | | | |
|--------------------------|--|-------------|------------------|-------------|------------------|-------------|
| | % of PWA | | % of PWA | | % of PWA | |
| | Male | # | Female | # | Total | # |
| Gateshead | 13,350 | 21.9 | 10,790 | 17.5 | 24,140 | 19.7 |
| Newcastle | 18,170 | 19.5 | 15,100 | 16.5 | 33,270 | 18.0 |
| North Tyneside | 11,630 | 18.6 | 9,770 | 15.2 | 21,400 | 16.9 |
| South Tyneside | 11,840 | 24.6 | 9,570 | 19.6 | 21,420 | 22.1 |
| Sunderland | 21,180 | 23.2 | 17,630 | 19.0 | 38,810 | 21.1 |
| Tyne and Wear | 76,180 | 21.4 | 62,870 | 17.5 | 139,040 | 19.4 |
| North East Region | 172,660 | 20.6 | 145,190 | 17.2 | 317,840 | 18.9 |
| Great Britain | 2,981,730 | 15.3 | 2,749,730 | 14.1 | 5,731,460 | 14.7 |
| | Employment and Support Allowance Claimants** May 2010 | | | | | |
| | % of PWA | | % of PWA | | % of PWA | |
| | Male | # | Female | # | Total | # |
| Gateshead | 1,560 | 2.6 | 1,000 | 1.6 | 2,550 | 2.1 |
| Newcastle | 2,000 | 2.1 | 1,400 | 1.5 | 3,400 | 1.8 |
| North Tyneside | 1,330 | 2.1 | 990 | 1.5 | 2,330 | 1.8 |
| South Tyneside | 1,290 | 2.7 | 940 | 1.9 | 2,230 | 2.3 |
| Sunderland | 2,310 | 2.5 | 1,650 | 1.8 | 3,960 | 2.2 |
| Tyne and Wear | 8,490 | 2.4 | 5,980 | 1.7 | 14,470 | 2.0 |
| North East Region | 18,140 | 2.2 | 12,620 | 1.5 | 30,760 | 1.8 |
| Great Britain | 301,680 | 1.5 | 225,440 | 1.2 | 527,120 | 1.4 |
| | Incapacity/Severe Disablement Allowance*** May 2010 | | | | | |
| | % of PWA | | % of PWA | | % of PWA | |
| | Male | # | Female | # | Total | # |
| Gateshead | 3,840 | 6.3 | 2,090 | 3.4 | 5,940 | 4.8 |
| Newcastle | 4,500 | 4.8 | 2,470 | 2.7 | 6,960 | 3.8 |
| North Tyneside | 3,080 | 4.9 | 1,930 | 3.0 | 5,010 | 3.9 |
| South Tyneside | 3,040 | 6.3 | 1,540 | 3.2 | 4,580 | 4.7 |
| Sunderland | 6,380 | 7.0 | 3,730 | 4.0 | 10,110 | 5.5 |
| Tyne and Wear | 20,840 | 5.9 | 11,760 | 3.3 | 32,600 | 4.6 |
| North East Region | 49,980 | 6.0 | 29,640 | 3.5 | 79,620 | 4.7 |
| Great Britain | 768,720 | 3.9 | 509,550 | 2.6 | 1,278,270 | 3.3 |

Source: Department for Work and Pensions

Over the period from August 2008, in Tyne & Wear, Benefit Claimants (Working age Client Group) were up by 8,810 (or up +6.8%). ESA claimants reached 14,470 – which explains the 9,050 (-21.7%) fall in IB/SDA numbers.

For information: Data for August 2008 is the last quarterly snapshot before the introduction of the new ESA (Employment and Support Allowance) which replaced Incapacity Benefit for new claimants from Oct. 2008.

Notes Overleaf:

The data are based on 100% of claims so are not subject to any sampling error. Figures are rounded to the nearest 10, and those below 5 are suppressed as statistically unreliable.

Data relate to a single point in time and provide a snapshot of claims at that point. Data are not seasonally adjusted.

- * Benefit claimants – working age client group includes benefit claimants aged 16-64 years, on Income Support (IS) only, Job Seekers Allowance (JSA) only, Incapacity Benefit (IB) only, IS and IB, DLA and IB, DLA, IS and IB, Disability Living Allowance (DLA) only, DLA, IS and SDA, DLA and IS, DLA and SDA, IS and SDA, Severe Disablement Allowance (SDA) only, DLA and JSA, other combinations. Data includes all durations and all family types.
- ** The figures relating to Employment Support Allowance have been thoroughly quality assured to National Statistics standard; however it should be noted that this is a new benefit using a new data source which may not have reached steady state in terms of operational processing. Hence most recent data shown is provisional. Tyne & Wear fig. is sum of districts. GB fig. is sum of GORs (regions).
- *** Count of those in receipt of Incapacity Benefit or Severe Disablement Allowance, aged 16-64, for all durations.
- # Benefit claimant count figures given in Table 4 are expressed as a proportion of the resident population of working age (16-64). In order to ensure consistency with District and Tyne & Wear boundaries, the population of working age (PWA) figures are derived from the mid-2001 population estimates (sum of CAS wards population of working age figures).

INTERNATIONAL LABOUR ORGANISATION (ILO) MEASURE OF UNEMPLOYMENT

The ILO definition of unemployment refers to people “without a job who were available to start work in the two weeks following their LFS interview and had looked for work in the four weeks prior to interview (or were waiting to take up a job they had already obtained)”. This has been the official, government, definition of unemployment since 1998.

Note: the estimates of District unemployment rates can be particularly volatile, with confidence intervals of about plus or minus 3 percentage points.

Table 5: National, Regional and Local ILO Unemployment, Unadjusted: 12 months Apr 2009-Mar 2010

| | Male | | | Female | | | Total | | |
|--------------------------|------------------|-------------|-------------|----------------|------------|-------------|------------------|-------------|-------------|
| | Male | % | Confidence* | Female | % | Confidence* | Total | % | Confidence* |
| Gateshead | 4,400 | 9.0 | 2.9 | 3,900 | 8.8 | 2.8 | 8,300 | 8.9 | 2.0 |
| Newcastle | 12,000 | 17.4 | 3.7 | 5,400 | 9.1 | 3.0 | 17,500 | 13.5 | 2.4 |
| North Tyneside | 6,500 | 12.1 | 3.1 | 2,600 | 5.5 | 2.3 | 9,200 | 9.0 | 2.0 |
| South Tyneside | 6,400 | 17.0 | 3.7 | 3,000 | 9.0 | 2.9 | 9,500 | 13.2 | 2.4 |
| Sunderland | 9,800 | 13.2 | 3.3 | 6,800 | 10.8 | 3.1 | 16,600 | 12.1 | 2.3 |
| Tyne and Wear | 39,100 | 13.8 | 1.5 | 21,800 | 8.8 | 1.3 | 60,900 | 11.4 | 1.0 |
| North East Region | 75,400 | 11.6 | 0.9 | 46,100 | 8.0 | 0.8 | 121,500 | 9.9 | 0.6 |
| Great Britain | 1,441,900 | 9.0 | 0.2 | 930,700 | 6.8 | 0.2 | 2,372,600 | 8.0 | 0.1 |

Source: Annual Population Survey, Office for National Statistics.

Notes:

These unemployment estimates (by ONS) are from its Annual Population Survey (APS), drawn from 12 months' data.

The unemployment rate is the number of unemployed people aged 16 to 64 expressed as a percentage of the economically active population aged 16 to 64.

*Estimates are presented with an indication of their reliability, in the form of approximate 95% confidence intervals. For example, an LFS estimate and confidence interval of 6.7% +/-0.7%, means that there is 95% confidence that the true rate would be between 6.0% and 7.4%. Only in exceptional circumstances would the true rate be outside the confidence interval. The narrower the confidence interval, means the more reliable the estimate.

APS estimates are rounded to the nearest 100 by ONS. Formerly, ONS' LFS estimates were rounded to the nearest 1,000. The annual Labour Force Survey (LFS) is now incorporated into the Annual Population Survey (APS). ONS publish estimates each quarter, although all these estimates are drawn from 12 months' data. LFS - quarterly: four quarter averages are no longer updated.

Previously Table 5 showed the number of unemployed females aged 16-59.

Appendix 1: Claimant Count Statistics Current (2004) Wards

November 2010

| Ward | FLOWS | | CLAIMANT UNEMPLOYMENT | | | | | |
|--------------------------------|--------------|--------------|-----------------------|------------|--------------|------------|--------------|------------|
| | onto regr | off regr | Male | %* | Female | %* | Total | %* |
| Birtley | 43 | 35 | 126 | 6.1 | 56 | 3.2 | 182 | 4.8 |
| Blaydon | 70 | 64 | 227 | 10.1 | 92 | 4.7 | 319 | 7.6 |
| Bridges | 79 | 74 | 302 | 15.1 | 75 | 5.3 | 377 | 11.1 |
| Chopwell and Rowlands Gill | 42 | 46 | 180 | 8.1 | 65 | 3.5 | 245 | 6.0 |
| Chowdene | 42 | 45 | 143 | 6.6 | 61 | 3.4 | 204 | 5.1 |
| Crawcrook and Greenside | 35 | 27 | 89 | 3.8 | 46 | 2.3 | 135 | 3.1 |
| Deckham | 90 | 87 | 241 | 11.4 | 106 | 5.7 | 347 | 8.7 |
| Dunston and Teams | 89 | 83 | 316 | 15.1 | 108 | 6.5 | 424 | 11.3 |
| Dunston Hill and Whickham East | 36 | 49 | 106 | 4.8 | 33 | 1.7 | 139 | 3.3 |
| Felling | 80 | 77 | 299 | 18.2 | 140 | 10.1 | 439 | 14.5 |
| High Fell | 79 | 87 | 263 | 14.5 | 105 | 6.8 | 368 | 10.9 |
| Lamesley | 45 | 46 | 132 | 6.6 | 62 | 3.8 | 194 | 5.4 |
| Lobley Hill and Bensham | 72 | 61 | 261 | 11.8 | 84 | 4.3 | 345 | 8.3 |
| Low Fell | 31 | 34 | 70 | 3.0 | 33 | 1.6 | 103 | 2.3 |
| Pelaw and Heworth | 46 | 63 | 145 | 6.9 | 71 | 4.0 | 216 | 5.5 |
| Ryton, Crookhill and Stella | 34 | 39 | 127 | 6.4 | 44 | 2.4 | 171 | 4.5 |
| Saltwell | 82 | 83 | 242 | 10.8 | 111 | 6.0 | 353 | 8.6 |
| Wardley and Leam Lane | 40 | 29 | 130 | 6.0 | 58 | 3.2 | 188 | 4.7 |
| Whickham North | 50 | 43 | 131 | 6.1 | 63 | 3.5 | 194 | 4.9 |
| Whickham South and Sunnyside | 25 | 22 | 72 | 3.1 | 31 | 1.6 | 103 | 2.4 |
| Windy Nook and Whitehills | 59 | 56 | 163 | 6.8 | 68 | 3.4 | 231 | 5.3 |
| Winlaton and High Spen | 45 | 34 | 133 | 6.3 | 44 | 2.6 | 177 | 4.6 |
| GATESHEAD | 1,214 | 1,184 | 3,898 | 8.3 | 1,556 | 3.9 | 5,454 | 6.3 |
| Benwell and Scotswood | 117 | 109 | 423 | 14.0 | 166 | 6.1 | 589 | 10.2 |
| Blakelaw | 64 | 62 | 262 | 9.7 | 109 | 5.0 | 371 | 7.6 |
| Byker | 164 | 156 | 461 | 16.9 | 200 | 9.0 | 661 | 13.4 |
| Castle | 36 | 37 | 123 | 4.4 | 51 | 2.1 | 174 | 3.3 |
| Dene | 23 | 28 | 83 | 3.2 | 29 | 1.3 | 112 | 2.3 |
| Denton | 59 | 59 | 202 | 7.9 | 81 | 3.8 | 283 | 6.1 |
| East Gosforth | 25 | 24 | 63 | 2.5 | 43 | 1.9 | 106 | 2.3 |
| Elswick | 157 | 150 | 607 | 19.9 | 205 | 10.2 | 812 | 16.0 |
| Fawdon | 62 | 77 | 254 | 11.0 | 91 | 4.5 | 345 | 8.0 |
| Fenham | 67 | 63 | 189 | 7.2 | 93 | 4.3 | 282 | 5.9 |
| Kenton | 87 | 72 | 276 | 10.9 | 121 | 5.7 | 397 | 8.5 |
| Lemington | 70 | 50 | 212 | 8.1 | 73 | 3.1 | 285 | 5.7 |
| Newburn | 56 | 54 | 195 | 8.5 | 63 | 3.1 | 258 | 6.0 |
| North Heaton | 31 | 44 | 117 | 4.7 | 58 | 2.7 | 175 | 3.8 |
| North Jesmond | 34 | 41 | 53 | 2.1 | 31 | 1.6 | 84 | 1.9 |
| Ouseburn | 59 | 79 | 235 | 9.1 | 72 | 3.6 | 307 | 6.7 |
| Parklands | 27 | 19 | 67 | 2.7 | 40 | 1.9 | 107 | 2.3 |
| South Heaton | 76 | 89 | 229 | 8.7 | 94 | 4.7 | 323 | 6.9 |
| South Jesmond | 30 | 39 | 101 | 4.3 | 32 | 1.7 | 133 | 3.2 |
| Walker | 150 | 151 | 523 | 22.2 | 187 | 10.4 | 710 | 17.1 |
| Walkergate | 69 | 61 | 270 | 11.2 | 105 | 5.3 | 375 | 8.5 |
| Westerhope | 32 | 33 | 86 | 3.7 | 44 | 2.2 | 130 | 3.0 |
| Westgate | 75 | 96 | 342 | 15.4 | 102 | 6.1 | 444 | 11.4 |
| West Gosforth | 21 | 33 | 65 | 2.5 | 35 | 1.6 | 100 | 2.1 |
| Wingrove | 80 | 96 | 283 | 10.5 | 108 | 5.3 | 391 | 8.3 |
| Woolsington | 68 | 86 | 202 | 8.1 | 101 | 4.7 | 303 | 6.5 |
| NEWCASTLE | 1,739 | 1,808 | 5,923 | 8.9 | 2,334 | 4.3 | 8,257 | 6.8 |

Source: Office for National Statistics, Tyne & Wear Research and Information

Notes: * Rates are the number of unemployed as a percentage of the estimated labour force (the economically active population, Male 16-64, Female 16-59), at mid-2007 (TWRI ests. based on ONS population estimates)

November 2010

| Ward | FLOWS | | CLAIMANT UNEMPLOYMENT | | | | | |
|-------------------------|--------------|---------------|-----------------------|-------------|--------------|------------|--------------|------------|
| | onto | regr off regr | Male | %* | Female | %* | Total | %* |
| Battle Hill | 82 | 60 | 230 | 7.6 | 102 | 4.1 | 332 | 6.0 |
| Benton | 35 | 48 | 138 | 5.5 | 46 | 2.1 | 184 | 3.9 |
| Camperdown | 59 | 65 | 189 | 6.6 | 81 | 3.3 | 270 | 5.1 |
| Chirton | 102 | 89 | 445 | 15.8 | 151 | 6.3 | 596 | 11.4 |
| Collingwood | 82 | 65 | 254 | 9.7 | 103 | 4.7 | 357 | 7.4 |
| Cullercoats | 34 | 35 | 111 | 5.0 | 44 | 2.2 | 155 | 3.7 |
| Howdon | 70 | 68 | 354 | 13.2 | 132 | 6.1 | 486 | 10.0 |
| Killingworth | 56 | 51 | 139 | 4.7 | 53 | 2.2 | 192 | 3.6 |
| Longbenton | 77 | 62 | 211 | 9.2 | 72 | 3.3 | 283 | 6.3 |
| Monkseaton North | 25 | 38 | 82 | 3.3 | 25 | 1.1 | 107 | 2.3 |
| Monkseaton South | 43 | 32 | 106 | 4.4 | 62 | 2.9 | 168 | 3.7 |
| Northumberland | 33 | 37 | 149 | 6.3 | 56 | 2.8 | 205 | 4.7 |
| Preston | 35 | 34 | 107 | 4.5 | 47 | 2.2 | 154 | 3.4 |
| Riverside | 108 | 102 | 487 | 17.6 | 168 | 7.7 | 655 | 13.2 |
| St Mary's | 21 | 19 | 63 | 3.0 | 26 | 1.6 | 89 | 2.4 |
| Tynemouth | 41 | 46 | 153 | 5.7 | 53 | 2.3 | 206 | 4.1 |
| Valley | 61 | 69 | 173 | 7.1 | 77 | 3.6 | 250 | 5.5 |
| Wallsend | 74 | 67 | 421 | 14.7 | 122 | 5.1 | 543 | 10.3 |
| Weetslade | 45 | 41 | 109 | 4.5 | 54 | 2.5 | 163 | 3.6 |
| Whitley Bay | 54 | 43 | 191 | 7.5 | 78 | 3.5 | 269 | 5.6 |
| NORTH TYNESIDE | 1,137 | 1,071 | 4,112 | 8.0 | 1,552 | 3.5 | 5,664 | 5.9 |
| Beacon and Bents | 108 | 129 | 373 | 16.1 | 139 | 8.2 | 512 | 12.8 |
| Bede | 72 | 83 | 249 | 12.6 | 89 | 5.6 | 338 | 9.5 |
| Biddick and All Saints | 92 | 95 | 339 | 17.0 | 182 | 10.5 | 521 | 14.0 |
| Boldon Colliery | 57 | 71 | 217 | 8.6 | 89 | 4.2 | 306 | 6.6 |
| Cleadon and East Boldon | 20 | 32 | 58 | 2.6 | 32 | 1.7 | 90 | 2.2 |
| Cleadon Park | 49 | 52 | 187 | 12.7 | 84 | 6.9 | 271 | 10.1 |
| Felgate and Hedworth | 66 | 68 | 221 | 10.6 | 80 | 4.6 | 301 | 7.9 |
| Harton | 67 | 72 | 209 | 9.8 | 85 | 5.1 | 294 | 7.7 |
| Hebburn North | 65 | 78 | 259 | 11.6 | 111 | 5.8 | 370 | 8.9 |
| Hebburn South | 57 | 51 | 195 | 9.8 | 77 | 4.8 | 272 | 7.6 |
| Horsley Hill | 55 | 67 | 201 | 9.8 | 87 | 5.3 | 288 | 7.8 |
| Monkton | 71 | 79 | 246 | 11.9 | 98 | 5.5 | 344 | 9.0 |
| Primrose | 93 | 88 | 321 | 16.1 | 108 | 6.9 | 429 | 12.1 |
| Simonside and Rekenyke | 116 | 124 | 364 | 15.7 | 172 | 9.9 | 536 | 13.2 |
| Westoe | 57 | 61 | 174 | 7.2 | 63 | 3.3 | 237 | 5.5 |
| West Park | 49 | 76 | 191 | 8.3 | 67 | 3.6 | 258 | 6.2 |
| Whitburn and Marsden | 34 | 43 | 143 | 8.0 | 55 | 3.7 | 198 | 6.1 |
| Whiteleas | 51 | 74 | 207 | 9.8 | 96 | 5.7 | 303 | 8.0 |
| SOUTH TYNESIDE | 1,179 | 1,343 | 4,154 | 10.9 | 1,714 | 5.6 | 5,868 | 8.5 |

Source: Office for National Statistics, Tyne & Wear Research and Information

Notes: * Rates are the number of unemployed as a percentage of the estimated labour force (the economically active population, Male 16-64, Female 16-59), at mid-2007 (TWRI ests. based on ONS population estimates).

November 2010

| Ward | FLOWS | | CLAIMANT UNEMPLOYMENT | | | | | |
|--------------------|--------------|----------|-----------------------|------|--------|------|--------|------|
| | onto regr | off regr | Male | %* | Female | %* | Total | %* |
| Barnes | 69 | 72 | 212 | 7.7 | 76 | 3.2 | 288 | 5.7 |
| Castle | 85 | 70 | 297 | 10.4 | 136 | 5.8 | 433 | 8.3 |
| Copt Hill | 59 | 58 | 214 | 7.4 | 104 | 4.5 | 318 | 6.1 |
| Doxford | 48 | 52 | 154 | 5.4 | 68 | 2.8 | 222 | 4.2 |
| Fulwell | 37 | 55 | 106 | 3.7 | 52 | 2.1 | 158 | 3.0 |
| Hendon | 191 | 168 | 684 | 27.1 | 240 | 11.2 | 924 | 19.8 |
| Hetton | 70 | 70 | 209 | 7.8 | 83 | 4.0 | 292 | 6.2 |
| Houghton | 86 | 60 | 209 | 7.6 | 76 | 3.2 | 285 | 5.6 |
| Millfield | 78 | 97 | 278 | 10.0 | 113 | 4.8 | 391 | 7.6 |
| Pallion | 89 | 98 | 370 | 14.8 | 149 | 7.2 | 519 | 11.4 |
| Redhill | 100 | 93 | 344 | 12.6 | 166 | 7.4 | 510 | 10.3 |
| Ryhope | 63 | 68 | 215 | 8.5 | 122 | 5.4 | 337 | 7.0 |
| St Anne's | 107 | 77 | 322 | 12.8 | 135 | 6.2 | 457 | 9.7 |
| St Chad's | 57 | 52 | 197 | 9.1 | 73 | 3.7 | 270 | 6.5 |
| St Michael's | 62 | 81 | 251 | 8.9 | 87 | 3.7 | 338 | 6.6 |
| St Peter's | 69 | 66 | 211 | 7.2 | 82 | 3.4 | 293 | 5.5 |
| Sandhill | 95 | 108 | 323 | 13.0 | 143 | 7.1 | 466 | 10.3 |
| Shiney Row | 87 | 71 | 231 | 7.2 | 75 | 2.7 | 306 | 5.1 |
| Silksworth | 95 | 85 | 255 | 9.4 | 120 | 4.9 | 375 | 7.3 |
| Southwick | 95 | 85 | 373 | 15.6 | 131 | 6.7 | 504 | 11.6 |
| Washington Central | 59 | 77 | 190 | 6.0 | 81 | 3.0 | 271 | 4.7 |
| Washington East | 57 | 77 | 178 | 5.6 | 83 | 3.2 | 261 | 4.5 |
| Washington North | 92 | 108 | 334 | 10.8 | 174 | 6.9 | 508 | 9.1 |
| Washington South | 54 | 63 | 162 | 4.8 | 74 | 2.7 | 236 | 3.9 |
| Washington West | 66 | 71 | 178 | 5.6 | 71 | 2.7 | 249 | 4.3 |
| SUNDERLAND | 1,970 | 1,982 | 6,497 | 9.3 | 2,714 | 4.6 | 9,211 | 7.2 |
| TYNE AND WEAR | 7,239 | 7,388 | 24,584 | 9.0 | 9,870 | 4.3 | 34,454 | 6.9 |

Source: Office for National Statistics, Tyne & Wear Research and Information

Notes: * Rates are the number of unemployed as a percentage of the estimated labour force (the economically active population, Male 16-64, Female 16-59), at mid-2007 (TWRI ests. based on ONS population estimates).