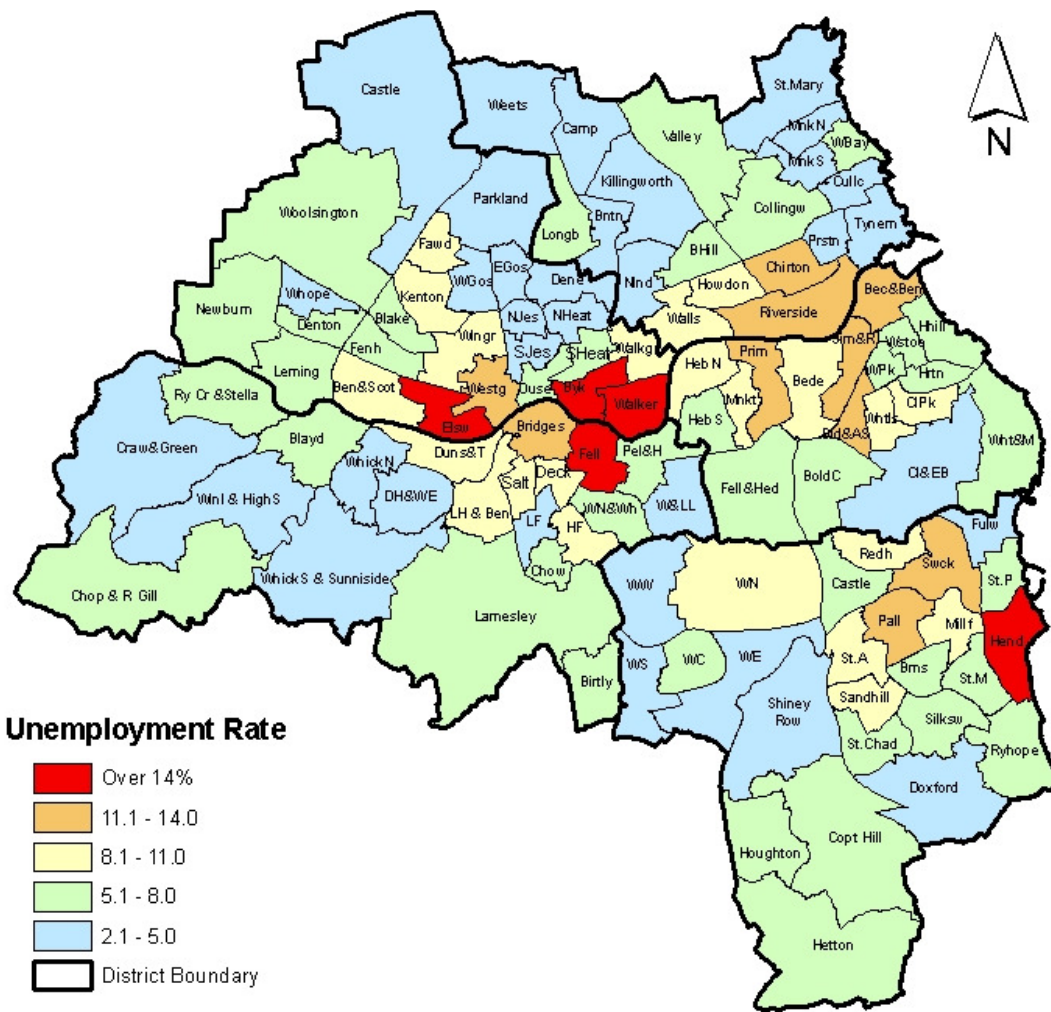




CLAIMANT COUNT UNEMPLOYMENT

Claimant Count Unemployment Rates, August 2010



Note: Rates are the number of unemployed as a percentage of the estimated labour force (the economically active population), at mid-2007 (TWRI ests. based on ONS population estimates).

Source: Office for National Statistics, Tyne & Wear Research and Information. Mapped by TWRI, © Crown Copyright, 2009, All rights reserved (Tyne & Wear Research and Information) (Licence No 10002987) (Sept. 2010).

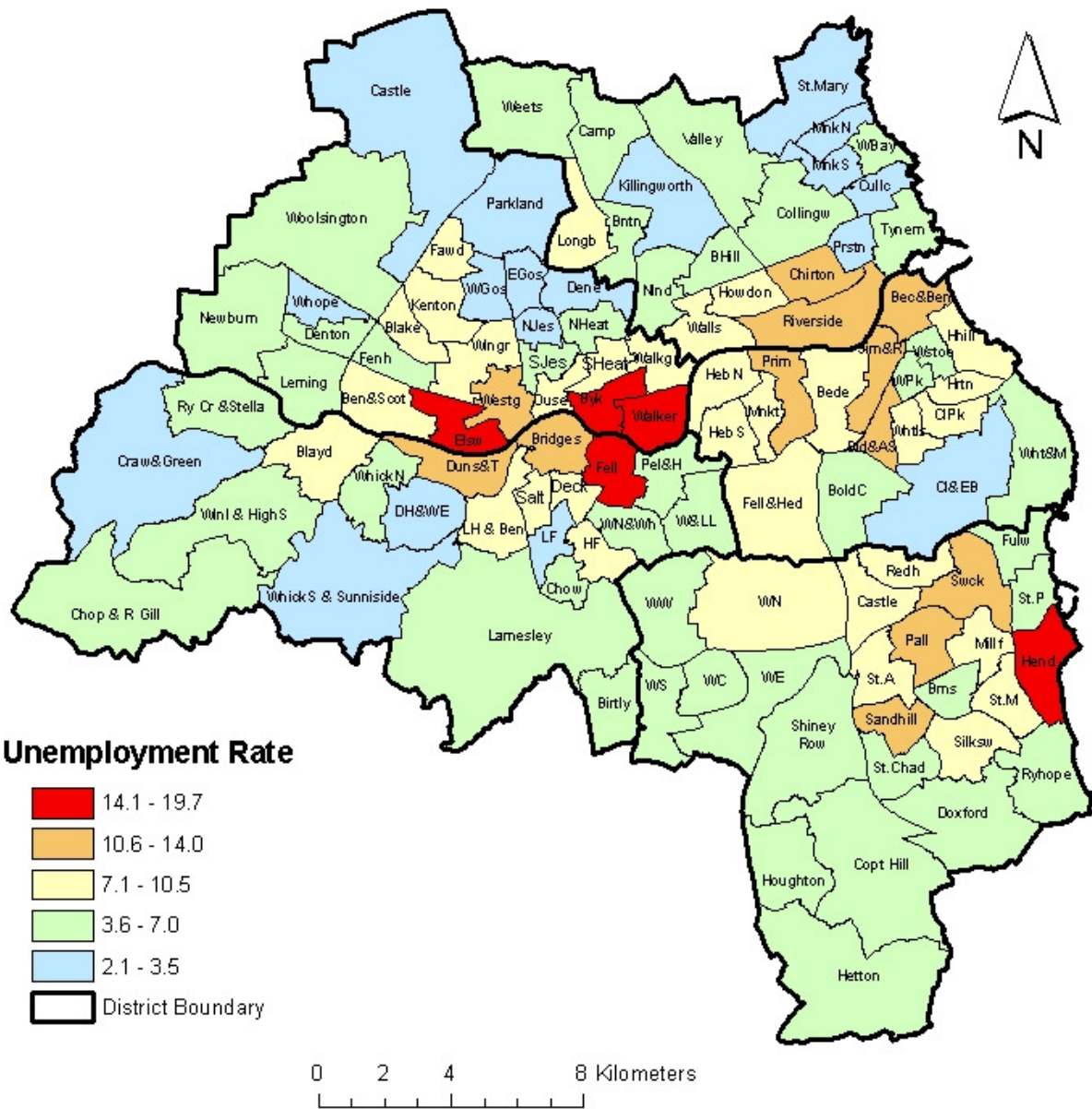
TYNE & WEAR



RESEARCH AND INFORMATION

Claimant Count Unemployment Rates, August 2010

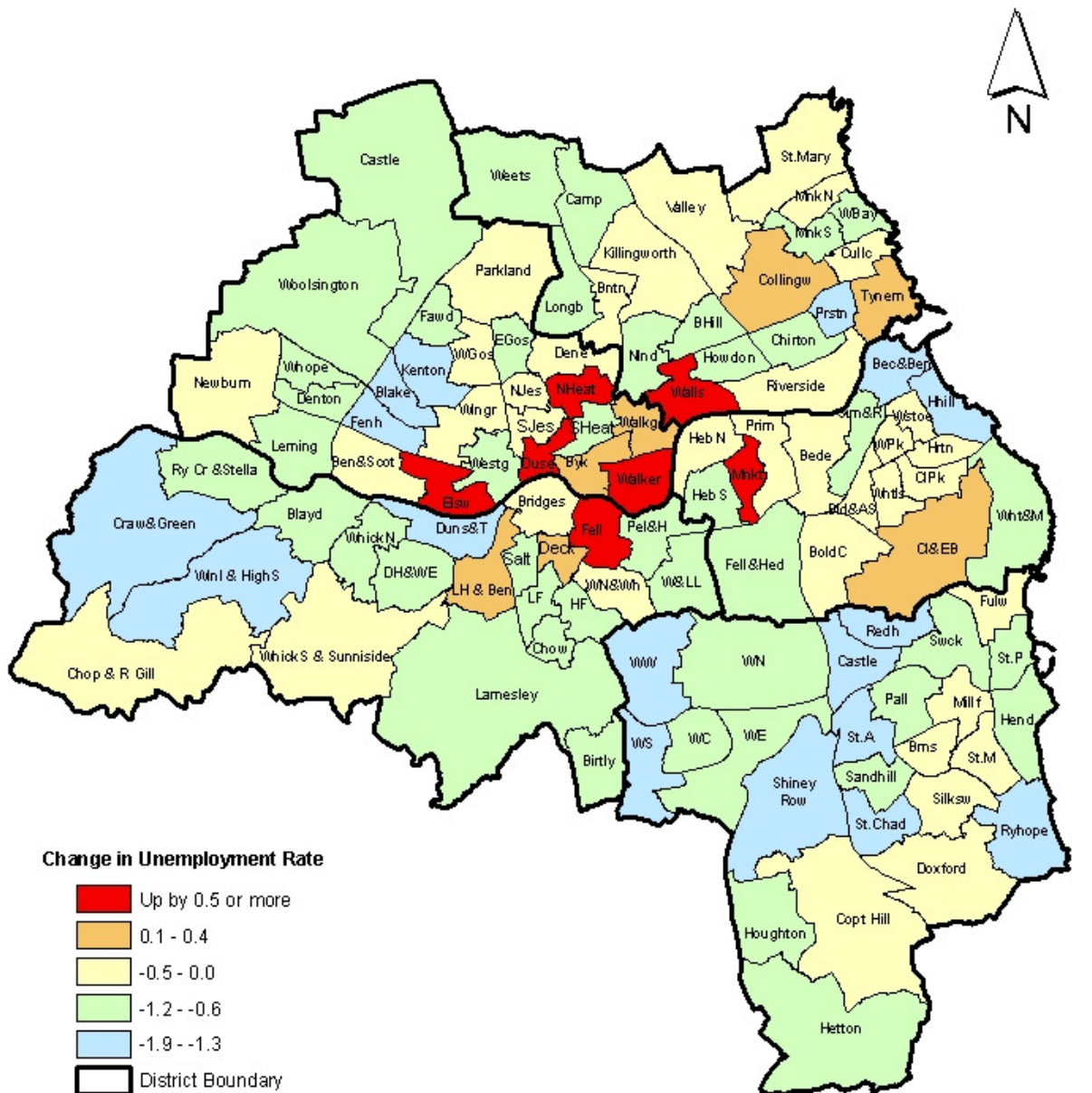
(Showing County Rate = 7.0%)



Note: Rates are the number of unemployed as a percentage of the estimated labour force (the economically active population), at mid-2007 (TWRI ests. based on ONS population estimates).

Source: Office for National Statistics, Tyne & Wear Research and Information. Mapped by TWRI, © Crown Copyright, 2009, All rights reserved (Tyne & Wear Research and Information) (Licence No 10002987) (Sept. 2010).

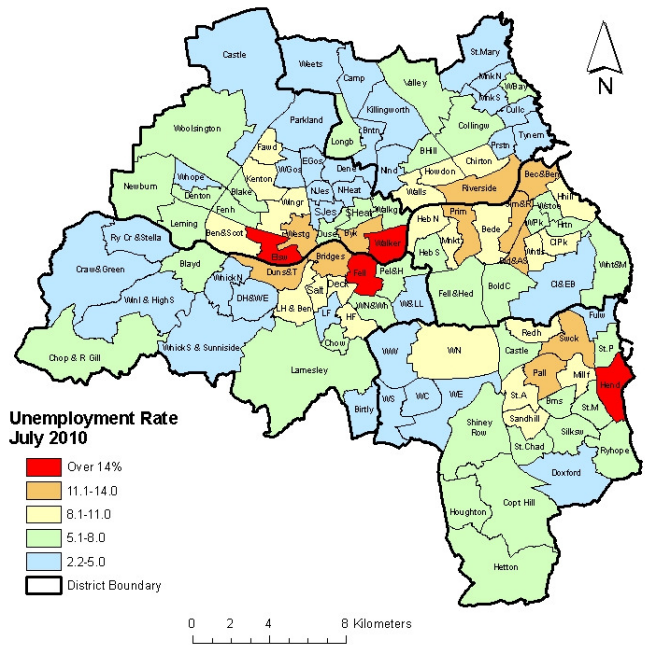
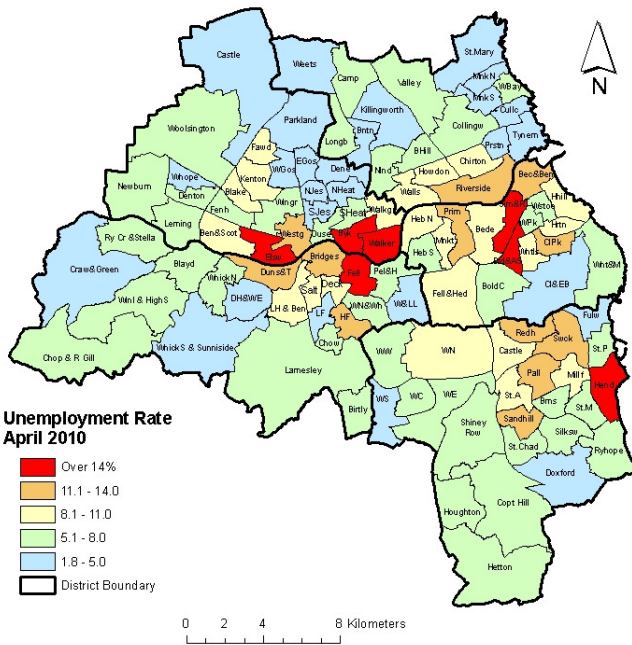
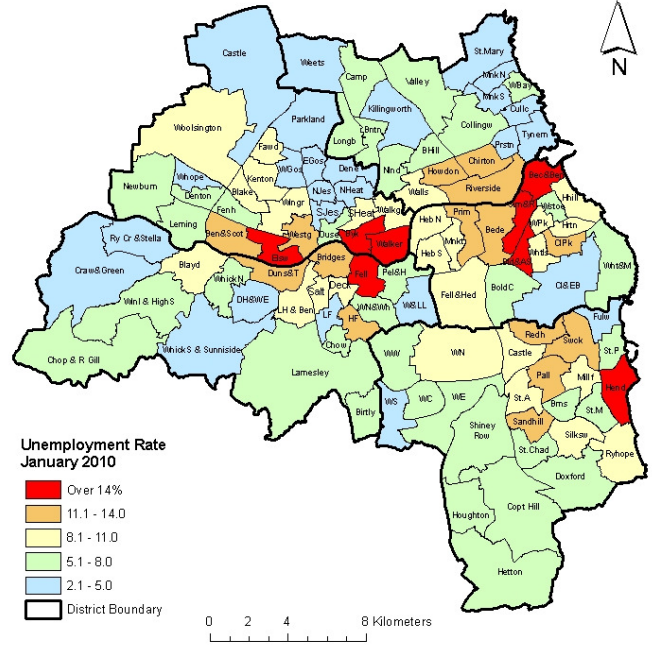
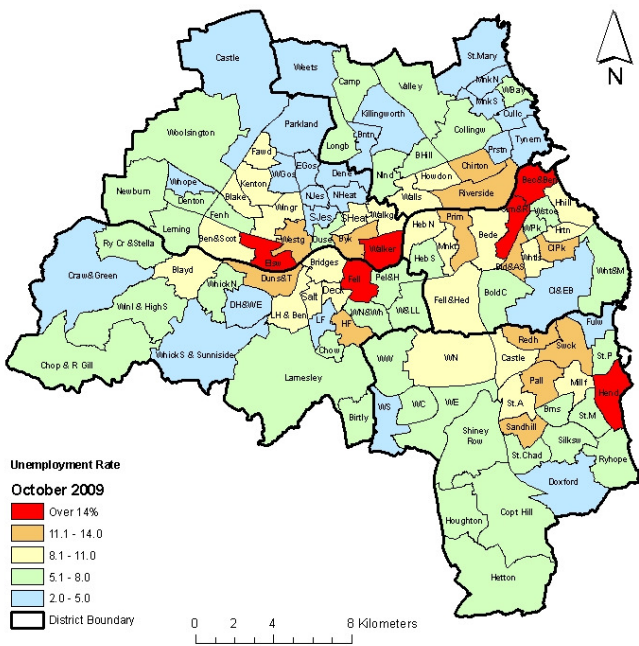
Change in Claimant Count Unemployment Rates, August 2009 to August 2010



Note: Rates are the number of unemployed as a percentage of the estimated labour force (the economically active population), at mid-2007 (TWRI ests. based on ONS population estimates).

Source: Office for National Statistics, Tyne & Wear Research and Information. Mapped by TWRI, © Crown Copyright, 2009, All rights reserved (Tyne & Wear Research and Information) (Licence No 10002987) Sept. 2010).

Claimant Count Unemployment Rates October 2009 to July 2010



Note: Rates are the number of unemployed as a percentage of the estimated labour force (the economically active population), at mid-2007 (TWRI ests. based on ONS population estimates).

Source: Office for National Statistics, Tyne & Wear Research and Information. Mapped by TWRI, © Crown Copyright, 2009, All rights reserved (Tyne & Wear Research and Information) (Licence No 10002987) (May 2010).