



The claimant count reports numbers qualifying for benefits as a result of unemployment and is subject to the associated administrative system.

**Table 1: Change in Total Claimant Count: Seasonally Adjusted*:
September 2010**

(Workforce rates)[#]

	Total	Rate %	Change since previous:			
			Month	%	Year	%
North East Region	81,300	6.7 (w)	1,000	1.2	-5,800	-6.7
Great Britain	1,414,800	4.5 (w)	4,800	0.3	-149,200	-9.5
United Kingdom	1,473,100	4.5 (w)	5,300	0.4	-144,100	-8.9

Source: Office for National Statistics

Notes:

* The seasonally adjusted series takes account of previous changes which have affected the unemployment count so that the whole series over time is consistent with current figures. Seasonally adjusted figures are not available below regional level. Claimants aged under 18 are excluded. Figures in this table are provisional.

The national and regional claimant count rates in Table 1 are the number of unemployed as a percentage of the estimated total workforce (the sum of unemployed claimants, employees in employment, self-employed, HM Forces and participants on work-related government training programmes), at mid-2009.

In January 2003, the Office for National Statistics (ONS) withdrew workforce-based claimant count rates for sub-regional areas, however, they remain available for regions and countries. The workforce-based rates, below regions, were replaced with a new residence-based measure. The claimant count, as a 'proportion' of the resident population (aged 16 - 64), are given in Table 3 and are named 'claimant count proportions'. TWRI's residence-based rates (which use the economically active as the denominator) are given in Table 2 (overleaf).

Table 2: National, Regional and Local Claimant Count* and Change, Unadjusted: September 2010

	Male	Rate%	Female	Rate%	Total	Rate%	Change since previous month:		Change since previous year:	
							Number	%	Number	%
Gateshead	3,920	8.4 R	1,586	4.0 R	5,506	6.4 R	-112	-2.0	-696	-11.2
Newcastle	6,133	9.2 R	2,440	4.5 R	8,573	7.1 R	12	0.1	-493	-5.4
North Tyneside	4,001	7.8 R	1,557	3.5 R	5,558	5.8 R	42	0.8	-420	-7.0
South Tyneside	4,234	11.2 R	1,861	6.1 R	6,095	8.9 R	116	1.9	-179	-2.9
Sunderland	6,465	9.3 R	2,838	4.8 R	9,303	7.2 R	-69	-0.7	-1,039	-10.0
Tyne and Wear	24,753	9.1 R	10,282	4.5 R	35,035	7.0 R	-11	0.0	-2,827	-7.5
North East	56,449	8.5 W	22,460	4.1 W	78,909	6.5 W	395	0.5	-6,167	-7.2
Great Britain	958,899	5.6 W	422,207	2.9 W	1,381,106	4.4 W	-15,902	-1.1	-156,514	-10.2
United Kingdom	1,001,931	5.7 W	437,670	2.9 W	1,439,601	4.4 W	-16,422	-1.1	-151,511	-9.5

Source: Office for National Statistics, Tyne and Wear Research and Information

Notes:

* Count of claimants of Jobseekers' Allowance

R = Residence-based. District and county claimant count rates are the number of unemployed as a percentage of the estimated labour force (the economically active population), mid-2007 (TWRI ests based on ONS population ests and are Male 16-64, Female 16-59). These are new denominators from May 2009 data.

W = Workforce-based. National and regional claimant count rates are the number of unemployed as a percentage of the estimated total workforce (the sum of unemployed claimants, employees in employment, self-employed, HM Forces and participants on work-related government training programmes), at mid-2009.

Caution:

District and Tyne & Wear numbers in Table 2 are calculated using current (2004) wards. These numbers may vary slightly from figures extracted direct from NOMISWEB, which are based on 1991 wards and are no longer in complete alignment with current Tyne & Wear boundaries.

Table 3: National, Regional and Local Claimant Count*, Unadjusted: September 2010

(Resident PWA-based proportions)

	Male	Percentage of population #	Female	Percentage of population #	Total	Percentage of population #
Gateshead	3,920	6.4	1,586	2.6	5,506	4.5
Newcastle	6,133	6.6	2,440	2.7	8,573	4.6
North Tyneside	4,001	6.4	1,557	2.4	5,558	4.4
South Tyneside	4,234	8.8	1,861	3.8	6,095	6.3
Sunderland	6,465	7.1	2,838	3.1	9,303	5.1
Tyne and Wear	24,753	7.0	10,282	2.9	35,035	4.9
North East Region	56,449	6.7	22,460	2.7	78,909	4.7
Great Britain	958,899	4.9	422,207	2.2	1,381,106	3.5
United Kingdom	1,001,931	5.0	437,670	2.2	1,439,601	3.6

Source: Office for National Statistics, Tyne and Wear Research and Information

Notes:

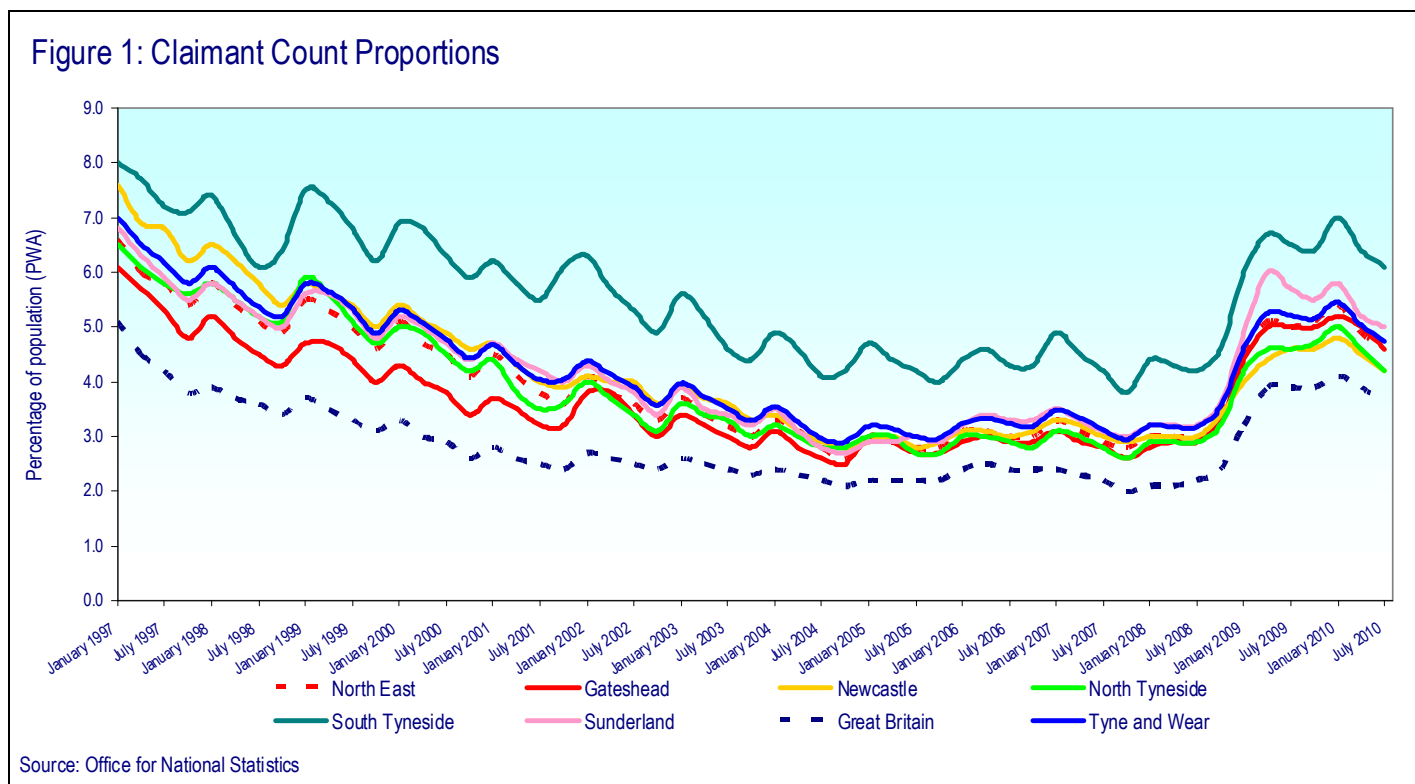
* Count of claimants of Jobseekers' Allowance

District and Tyne & Wear numbers in Table 3 are calculated using current (2004) wards. These numbers may vary slightly from figures extracted direct from NOMISWEB, which are based on 1991 wards.

Claimant count figures given in Table 3 are expressed as a proportion of the resident population of working age (16-64). In order to ensure consistency with District and Tyne & Wear boundaries, the population of working age (PWA) figures are calculated using the mid-2007 resident population aged 16-64 (sum of CAS wards population of working age figures).

The percentage figures in Table 3 are referred to as 'proportions' to distinguish them from the workforce-based rates, which are available at region/country level. On average, the 'proportions' are around a fifth smaller than the workforce rates, due to the wider denominators.

Note: From July 2010 data, the denominators have been widened to age 64. Previously, for women it was up to age 59. This new wider definition of the population of working age (PWA) has reduced the claimant count proportion for women by about 0.3pp (or about a tenth) and that for totals by about 0.2pp.



Notes:

Claimant count proportions (residence-based proportions of 16-64 Population) are given for January, April, July and October.

Caution:

Not seasonally adjusted, so shows seasonal rises normally in January.

Table 4: National, Regional and Local Benefit Claimants						
Benefit Claimants - working age client group* February 2010						
	% of PWA		% of PWA		% of PWA	
	Male	#	Female	#	Total	#
Gateshead	14,070	23.1	10,910	17.7	24,990	20.4
Newcastle	18,860	20.3	15,260	16.7	34,120	18.5
North Tyneside	12,150	19.4	9,820	15.3	21,960	17.3
South Tyneside	12,310	25.6	9,590	19.7	21,900	22.6
Sunderland	22,320	24.5	17,450	18.8	39,770	21.6
Tyne and Wear	79,710	22.4	63,030	17.6	142,740	20.0
North East Region	181,060	21.6	146,070	17.3	327,130	19.4
Great Britain	3,117,650	16.0	2,783,360	14.3	5,901,000	15.1
Employment and Support Allowance Claimants** February 2010						
	% of PWA		% of PWA		% of PWA	
	Male	#	Female	#	Total	#
Gateshead	1,460	2.4	920	1.5	2,380	1.9
Newcastle	1,860	2.0	1,290	1.4	3,150	1.7
North Tyneside	1,190	1.9	850	1.3	2,040	1.6
South Tyneside	1,210	2.5	850	1.7	2,060	2.1
Sunderland	2,180	2.4	1,470	1.6	3,650	2.0
Tyne and Wear	7,900	2.2	5,380	1.5	13,280	1.9
North East Region	16,950	2.0	11,340	1.3	28,290	1.7
Great Britain	277,400	1.4	202,050	1.0	479,420	1.2
Incapacity/Severe Disablement Allowance*** February 2010						
	% of PWA		% of PWA		% of PWA	
	Male	#	Female	#	Total	#
Gateshead	3,980	6.5	2,130	3.5	6,110	5.0
Newcastle	4,620	5.0	2,520	2.8	7,140	3.9
North Tyneside	3,190	5.1	1,960	3.0	5,150	4.1
South Tyneside	3,140	6.5	1,580	3.2	4,720	4.9
Sunderland	6,600	7.2	3,830	4.1	10,430	5.7
Tyne and Wear	21,530	6.0	12,020	3.3	33,540	4.7
North East Region	51,560	6.2	30,360	3.6	81,910	4.9
Great Britain	789,170	4.1	520,000	2.7	1,309,180	3.4

Source: Department for Work and Pensions

Over the period from August 2008, in Tyne & Wear, Benefit Claimants (Working age Client Group) were up by 12,510 (or up +9.6%). ESA claimants reached 13,280 – which explains the 8,110 (-19.5%) fall in IB/SDA numbers. For information: Data for August 2008 is the last quarterly snapshot before the introduction of the new ESA (Employment and Support Allowance) which replaced Incapacity Benefit for new claimants from Oct. 2008.

Notes Overleaf:

The data are based on 100% of claims so are not subject to any sampling error. Figures are rounded to the nearest 10, and those below 5 are suppressed as statistically unreliable.

Data relate to a single point in time and provide a snapshot of claims at that point. Data are not seasonally adjusted.

- * Benefit claimants – working age client group includes benefit claimants aged 16-64 years, on Income Support (IS) only, Job Seekers Allowance (JSA) only, Incapacity Benefit (IB) only, IS and IB, DLA and IB, DLA, IS and IB, Disability Living Allowance (DLA) only, DLA, IS and SDA, DLA and IS, DLA and SDA, IS and SDA, Severe Disablement Allowance (SDA) only, DLA and JSA, other combinations. Data includes all durations and all family types.
- ** The figures relating to Employment Support Allowance have been thoroughly quality assured to National Statistics standard; however it should be noted that this is a new benefit using a new data source which may not have reached steady state in terms of operational processing. Hence most recent data shown is provisional. Tyne & Wear fig. is sum of districts. GB fig. is sum of GORs (regions).
- *** Count of those in **receipt** of Incapacity Benefit or Severe Disablement Allowance, aged 16-64, for all durations.
- # Benefit claimant count figures given in Table 4 are expressed as a proportion of the resident population of working age (16-64). In order to ensure consistency with District and Tyne & Wear boundaries, the population of working age (PWA) figures are derived from the mid-2001 population estimates (sum of CAS wards population of working age figures).

INTERNATIONAL LABOUR ORGANISATION (ILO) MEASURE OF UNEMPLOYMENT

The ILO definition of unemployment refers to people “without a job who were available to start work in the two weeks following their LFS interview and had looked for work in the four weeks prior to interview (or were waiting to take up a job they had already obtained)”. This has been the official, government, definition of unemployment since 1998.

Note: the estimates of District unemployment rates can be particularly volatile, with confidence intervals of about plus or minus 2 percentage points.

Table 5: National, Regional and Local ILO Unemployment, Unadjusted: 12 months Apr 2009-Mar 2010

	<u>Male</u>	<u>%</u>	<u>Confidence*</u>	<u>Female</u>	<u>%</u>	<u>Confidence*</u>	<u>Total</u>	<u>%</u>	<u>Confidence*</u>
Gateshead	4,400	9.0	2.9	3,900	8.8	2.8	8,300	8.9	2.0
Newcastle	12,000	17.4	3.7	5,400	9.1	3.0	17,500	13.5	2.4
North Tyneside	6,500	12.1	3.1	2,600	5.5	2.3	9,200	9.0	2.0
South Tyneside	6,400	17.0	3.7	3,000	9.0	2.9	9,500	13.2	2.4
Sunderland	9,800	13.2	3.3	6,800	10.8	3.1	16,600	12.1	2.3
Tyne and Wear	39,100	13.8	1.5	21,800	8.8	1.3	60,900	11.4	1.0
North East Region	75,400	11.6	0.9	46,100	8.0	0.8	121,500	9.9	0.6
Great Britain	1,441,900	9.0	0.2	930,700	6.8	0.2	2,372,600	8.0	0.1

Source: Annual Population Survey, Office for National Statistics.

Notes:

These unemployment estimates (by ONS) are from its Annual Population Survey (APS), drawn from 12 months' data.

The unemployment rate is the number of unemployed people aged 16 to 64 expressed as a percentage of the economically active population aged 16 to 64.

*Estimates are presented with an indication of their reliability, in the form of approximate 95% confidence intervals. For example, an LFS estimate and confidence interval of 6.7% +/-0.7%, means that there is 95% confidence that the true rate would be between 6.0% and 7.4%. Only in exceptional circumstances would the true rate be outside the confidence interval. The narrower the confidence interval, means the more reliable the estimate.

APS estimates are rounded to the nearest 100 by ONS. Formerly, ONS' LFS estimates were rounded to the nearest 1,000. The annual Labour Force Survey (LFS) is now incorporated into the Annual Population Survey (APS). ONS publish estimates each quarter, although all these estimates are drawn from 12 months' data. LFS - quarterly: four quarter averages are no longer updated.

Previously Table 5 showed the number of unemployed females aged 16-59.

Appendix 1: Claimant Count Statistics Current (2004) Wards

September 2010

Ward	FLOWS		CLAIMANT UNEMPLOYMENT					
	onto regr	off regr	Male	%*	Female	%*	Total	%*
Birtley	41	52	131	6.4	55	3.1	186	4.9
Blaydon	61	67	212	9.5	94	4.8	306	7.3
Bridges	88	91	304	15.2	82	5.8	386	11.3
Chopwell and Rowlands Gill	46	48	186	8.3	74	3.9	260	6.3
Chowdene	47	52	149	6.9	58	3.2	207	5.2
Crawcrook and Greenside	37	35	84	3.6	37	1.8	121	2.8
Deckham	78	92	251	11.8	114	6.1	365	9.1
Dunston and Teams	88	82	316	15.1	106	6.4	422	11.2
Dunston Hill and Whickham East	41	41	103	4.7	37	1.9	140	3.4
Felling	107	98	313	19.0	140	10.1	453	15.0
High Fell	81	86	245	13.5	101	6.5	346	10.3
Lamesley	38	65	138	6.9	55	3.4	193	5.3
Lobley Hill and Bensham	71	96	256	11.6	100	5.1	356	8.5
Low Fell	34	28	84	3.6	29	1.4	113	2.6
Pelaw and Heworth	47	49	151	7.2	76	4.2	227	5.8
Ryton, Crookhill and Stella	38	53	126	6.4	50	2.8	176	4.7
Saltwell	77	69	254	11.3	116	6.3	370	9.1
Wardley and Leam Lane	44	40	125	5.7	52	2.8	177	4.4
Whickham North	53	35	129	6.0	61	3.4	190	4.8
Whickham South and Sunnyside	26	31	69	3.0	38	2.0	107	2.5
Windy Nook and Whitehills	56	62	175	7.3	68	3.4	243	5.5
Winlaton and High Spennithorne	41	40	119	5.6	43	2.5	162	4.2
GATESHEAD	1,240	1,312	3,920	8.4	1,586	4.0	5,506	6.4
Benwell and Scotswood	114	115	422	13.9	172	6.3	594	10.3
Blakelaw	103	82	260	9.6	106	4.8	366	7.5
Byker	143	154	487	17.9	205	9.2	692	14.0
Castle	45	33	113	4.0	54	2.2	167	3.2
Dene	43	25	93	3.5	28	1.2	121	2.5
Denton	75	69	219	8.6	78	3.7	297	6.4
East Gosforth	30	26	75	3.0	46	2.1	121	2.6
Elswick	172	143	619	20.3	213	10.6	832	16.4
Fawdon	72	65	271	11.8	98	4.9	369	8.6
Fenham	63	58	212	8.1	97	4.4	309	6.4
Kenton	83	73	265	10.4	124	5.9	389	8.4
Lemington	52	43	205	7.8	80	3.4	285	5.7
Newburn	49	53	187	8.2	57	2.8	244	5.7
North Heaton	45	63	121	4.8	67	3.1	188	4.0
North Jesmond	20	31	47	1.9	44	2.3	91	2.1
Ouseburn	72	78	239	9.2	94	4.7	333	7.2
Parklands	31	38	80	3.2	36	1.7	116	2.5
South Heaton	83	94	242	9.2	99	4.9	341	7.3
South Jesmond	41	39	111	4.7	43	2.3	154	3.7
Walker	148	136	542	23.0	214	11.9	756	18.2
Walkergate	61	63	265	11.0	98	4.9	363	8.3
Westerhope	32	33	86	3.7	30	1.5	116	2.7
Westgate	115	104	359	16.2	121	7.3	480	12.4
West Gosforth	39	33	80	3.1	40	1.9	120	2.5
Wingrove	84	78	305	11.3	101	5.0	406	8.6
Woolsington	61	56	228	9.1	95	4.4	323	7.0
NEWCASTLE	1,876	1,785	6,133	9.2	2,440	4.5	8,573	7.1

Source: Office for National Statistics, Tyne & Wear Research and Information

Notes: * Rates are the number of unemployed as a percentage of the estimated labour force (the economically active population, Male 16-64, Female 16-59), at mid-2007 (TWRI ests. based on ONS population estimates)

September 2010

Ward	FLOWS		CLAIMANT UNEMPLOYMENT					
	onto	regr off regr	Male	%*	Female	%*	Total	%*
Battle Hill	55	62	211	7.0	90	3.6	301	5.4
Benton	49	51	140	5.5	62	2.8	202	4.2
Camperdown	42	47	170	6.0	83	3.4	253	4.8
Chirton	95	79	436	15.5	156	6.5	592	11.3
Collingwood	66	69	240	9.2	73	3.3	313	6.5
Cullercoats	37	31	93	4.1	42	2.1	135	3.2
Howdon	89	68	331	12.3	137	6.3	468	9.6
Killingworth	60	51	147	5.0	49	2.0	196	3.6
Longbenton	68	79	226	9.8	86	4.0	312	7.0
Monkseaton North	40	25	85	3.4	40	1.8	125	2.7
Monkseaton South	53	39	97	4.1	59	2.7	156	3.4
Northumberland	37	34	166	7.0	53	2.6	219	5.0
Preston	45	35	91	3.8	52	2.5	143	3.2
Riverside	111	99	474	17.1	160	7.3	634	12.8
St Mary's	23	27	64	3.0	19	1.2	83	2.2
Tynemouth	57	57	154	5.7	66	2.8	220	4.4
Valley	66	70	173	7.1	78	3.7	251	5.5
Wallsend	92	81	412	14.4	131	5.4	543	10.3
Weetslade	42	47	109	4.5	44	2.1	153	3.4
Whitley Bay	56	56	182	7.1	77	3.5	259	5.4
NORTH TYNESIDE	1,183	1,107	4,001	7.8	1,557	3.5	5,558	5.8
Beacon and Bents	115	106	376	16.2	150	8.8	526	13.1
Bede	68	60	269	13.6	94	6.0	363	10.2
Biddick and All Saints	88	94	329	16.5	175	10.1	504	13.5
Boldon Colliery	57	59	218	8.7	93	4.4	311	6.7
Cleadon and East Boldon	31	23	70	3.2	43	2.3	113	2.8
Cleadon Park	67	63	182	12.4	91	7.5	273	10.2
Felgate and Hedworth	66	49	221	10.6	82	4.7	303	7.9
Harton	78	74	214	10.1	87	5.2	301	7.9
Hebbum North	70	67	273	12.3	118	6.1	391	9.4
Hebbum South	77	55	182	9.1	89	5.6	271	7.6
Horsley Hill	60	56	202	9.9	87	5.3	289	7.8
Monkton	80	77	243	11.7	109	6.2	352	9.2
Primrose	83	61	334	16.8	115	7.4	449	12.7
Simonside and Rekenyke	120	97	376	16.3	190	10.9	566	14.0
Westoe	66	67	163	6.7	79	4.2	242	5.6
West Park	70	64	214	9.3	94	5.1	308	7.4
Whitburn and Marsden	36	41	135	7.6	60	4.0	195	6.0
Whiteleas	72	65	233	11.1	105	6.2	338	8.9
SOUTH TYNESIDE	1,304	1,178	4,234	11.2	1,861	6.1	6,095	8.9

Source: Office for National Statistics, Tyne & Wear Research and Information

Notes: * Rates are the number of unemployed as a percentage of the estimated labour force (the economically active population, Male 16-64, Female 16-59), at mid-2007 (TWRI ests. based on ONS population estimates).

September 2010

Ward	FLOWS		CLAIMANT UNEMPLOYMENT					
	onto regr	off regr	Male	%*	Female	%*	Total	%*
Barnes	72	72	215	7.9	85	3.6	300	5.9
Castle	96	97	281	9.8	125	5.3	406	7.8
Copt Hill	73	64	223	7.7	96	4.2	319	6.2
Doxford	50	55	152	5.3	86	3.5	238	4.5
Fulwell	35	47	118	4.1	59	2.4	177	3.3
Hendon	187	180	676	26.8	252	11.8	928	19.9
Hetton	64	78	216	8.1	86	4.2	302	6.4
Houghton	64	80	196	7.1	67	2.9	263	5.1
Millfield	80	80	301	10.8	122	5.1	423	8.2
Pallion	108	109	366	14.7	159	7.7	525	11.5
Redhill	109	120	320	11.7	150	6.7	470	9.5
Ryhope	76	77	204	8.1	126	5.6	330	6.9
St Anne's	95	77	293	11.7	150	6.9	443	9.5
St Chad's	66	65	185	8.6	61	3.1	246	5.9
St Michael's	73	90	253	8.9	109	4.7	362	7.0
St Peter's	72	74	242	8.2	75	3.1	317	5.9
Sandhill	103	99	328	13.2	150	7.4	478	10.6
Shiney Row	94	84	214	6.7	87	3.1	301	5.1
Silksworth	88	96	247	9.1	123	5.0	370	7.2
Southwick	104	101	352	14.7	144	7.4	496	11.4
Washington Central	71	73	219	6.9	95	3.6	314	5.4
Washington East	85	85	199	6.3	83	3.2	282	4.9
Washington North	97	108	313	10.1	186	7.4	499	8.9
Washington South	64	52	165	4.9	79	2.9	244	4.0
Washington West	59	62	187	5.9	83	3.1	270	4.6
SUNDERLAND	2,085	2,125	6,465	9.3	2,838	4.8	9,303	7.2
TYNE AND WEAR	7,688	7,507	24,753	9.1	10,282	4.5	35,035	7.0

Source: Office for National Statistics, Tyne & Wear Research and Information

Notes: * Rates are the number of unemployed as a percentage of the estimated labour force (the economically active population, Male 16-64, Female 16-59), at mid-2007 (TWRI ests. based on ONS population estimates).