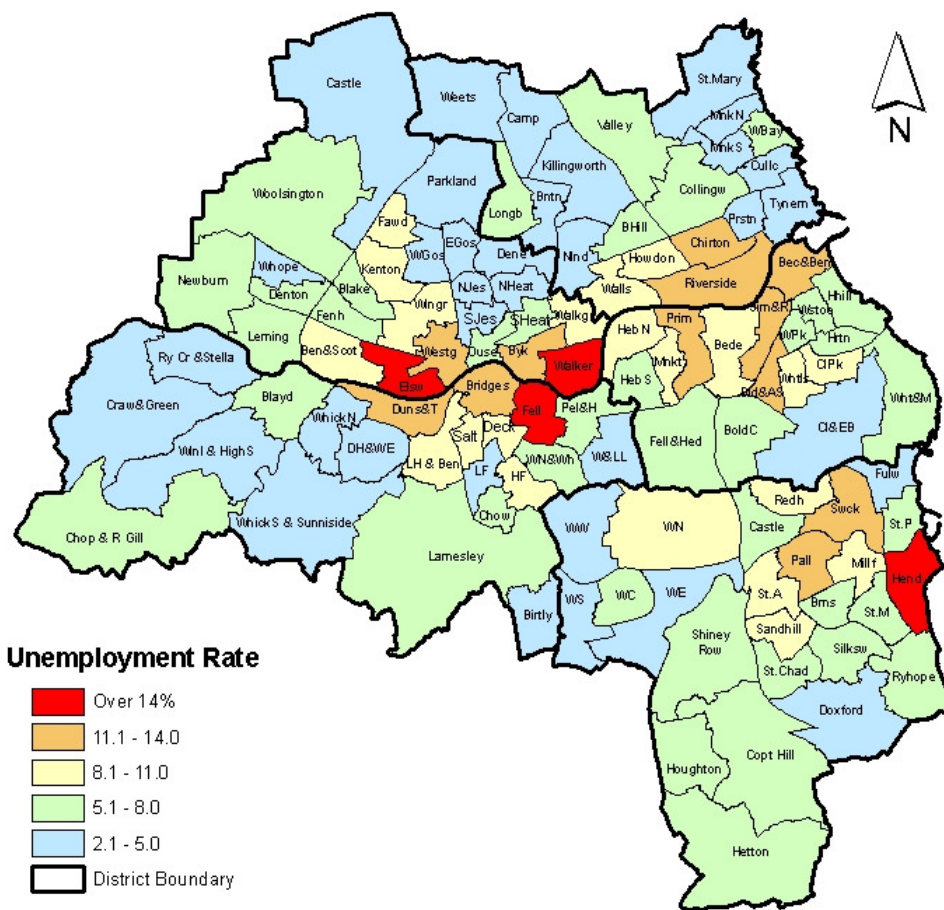




## CLAIMANT COUNT UNEMPLOYMENT

### Claimant Count Unemployment Rates, September 2010



0 2 4 8 Kilometers

Note: Rates are the number of unemployed as a percentage of the estimated labour force (the economically active population), at mid-2007 (TWRI ests. based on ONS population estimates).

Source: Office for National Statistics, Tyne & Wear Research and Information. Mapped by TWRI, © Crown Copyright, 2009. All rights reserved (Tyne & Wear Research and Information) (Licence No 10002987) (Oct. 2010).

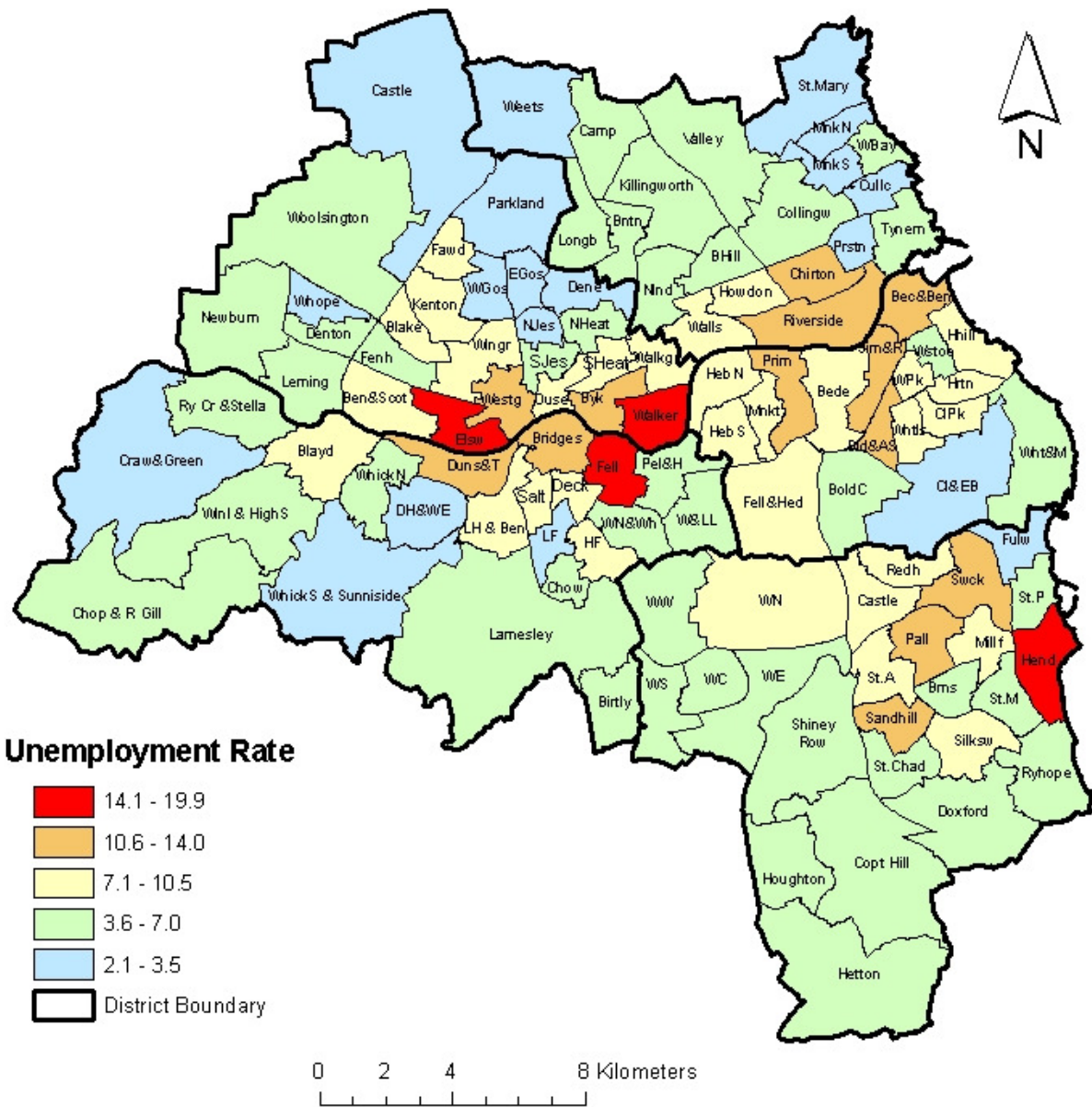
**TYNE & WEAR**



RESEARCH AND INFORMATION

# Claimant Count Unemployment Rates, September 2010

(Showing County Rate = 7.0%)



Note: Rates are the number of unemployed as a percentage of the estimated labour force (the economically active population), at mid-2007 (TWRI ests. based on ONS population estimates).

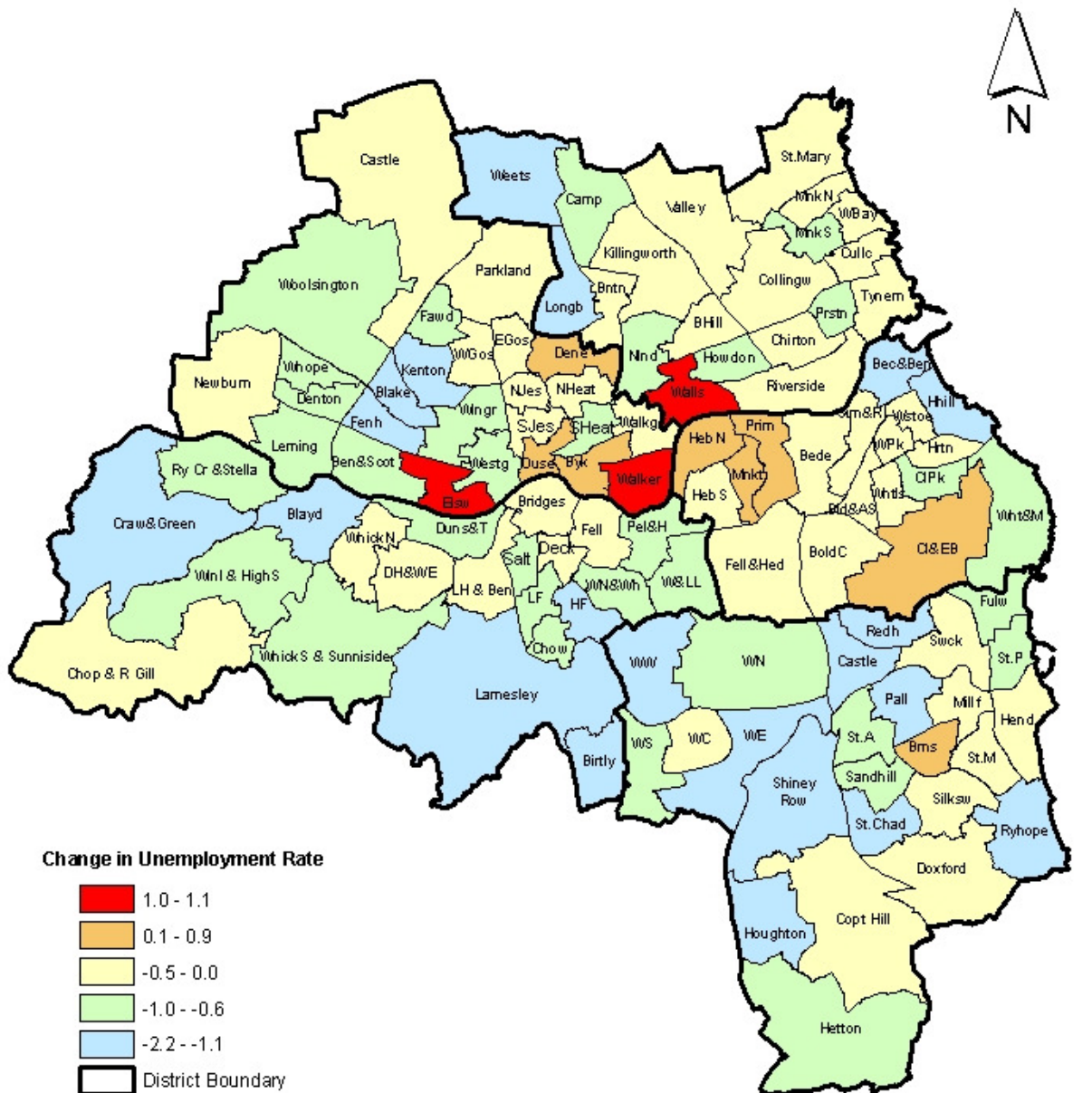
Source: Office for National Statistics, Tyne & Wear Research and Information. Mapped by TWRI, © Crown Copyright, 2009, All rights reserved (Tyne & Wear Research and Information) (Licence No 10002987) (Oct. 2010).

**TYNE & WEAR**



RESEARCH AND INFORMATION

## Change in Claimant Count Unemployment Rates, September 2009 to September 2010



Note: Rates are the number of unemployed as a percentage of the estimated labour force (the economically active population), at mid-2007 (TWRI ests. based on ONS population estimates).

Source: Office for National Statistics, Tyne & Wear Research and Information. Mapped by TWRI, © Crown Copyright, 2009, All rights reserved (Tyne & Wear Research and Information) (Licence No 10002987) Oct. 2010).

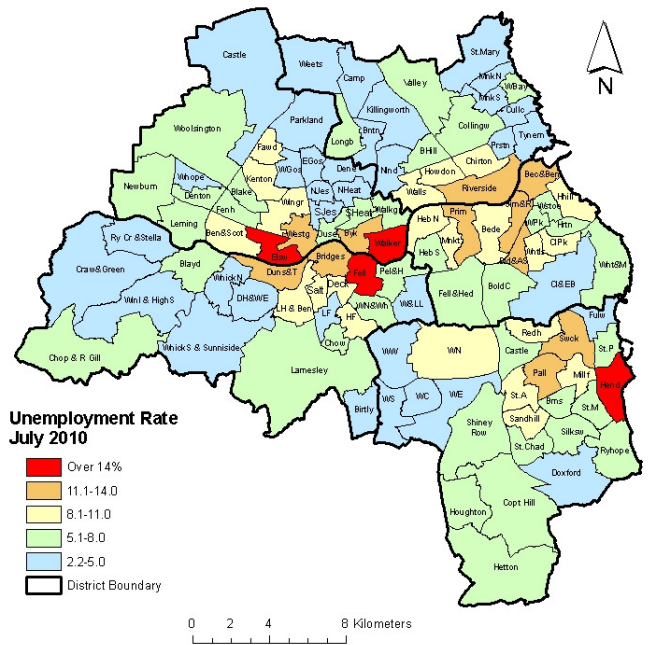
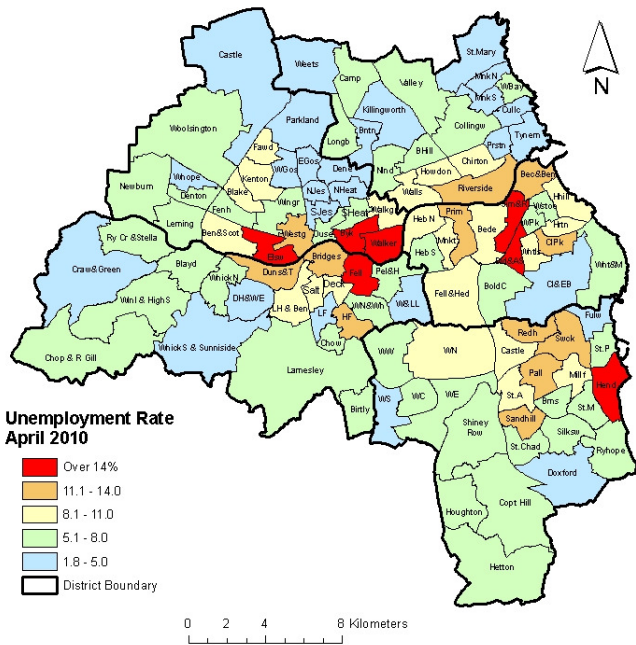
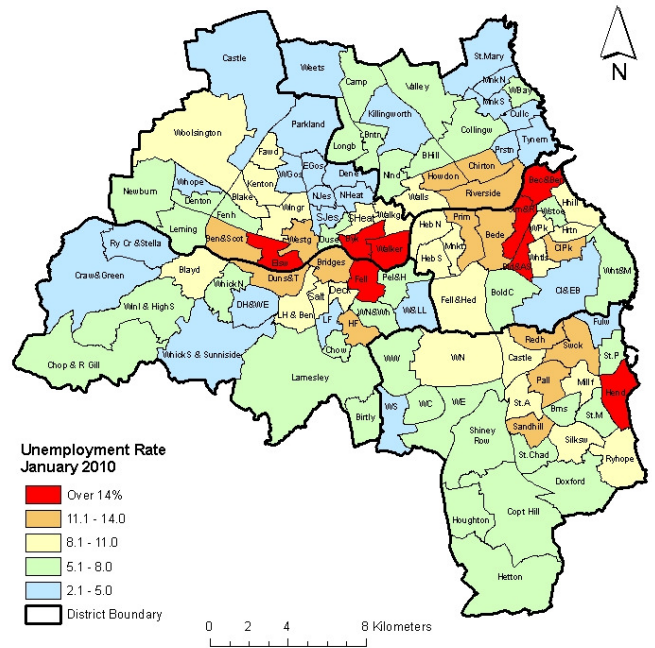
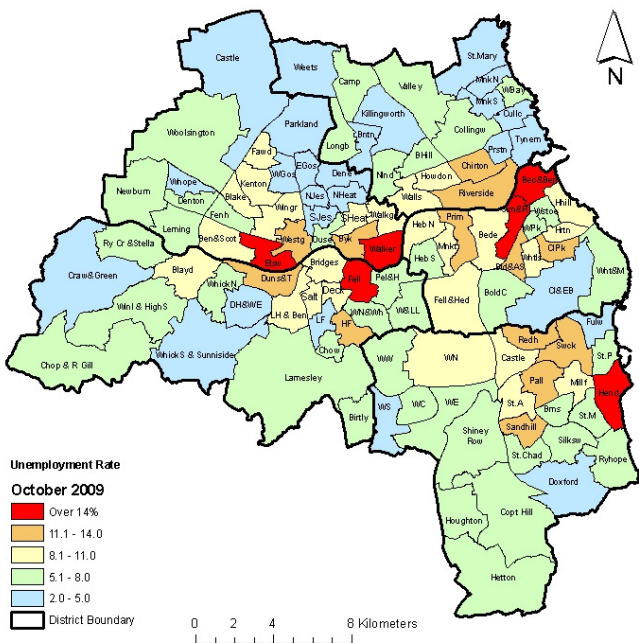
0 2 4 8 Kilometers

TYNE & WEAR



RESEARCH AND INFORMATION

# Claimant Count Unemployment Rates October 2009 to July 2010



Note: Rates are the number of unemployed as a percentage of the estimated labour force (the economically active population), at mid-2007 (TWRI ests. based on ONS population estimates).

Source: Office for National Statistics, Tyne & Wear Research and Information. Mapped by TWRI, © Crown Copyright, 2009, All rights reserved (Tyne & Wear Research and Information) (Licence No 10002987) (May 2010).