

Admission to Newcastle primary schools 2011

A guide for parents and carers of children applying for reception places at Newcastle first and primary schools



Apply online at
www.newcastle.gov.uk/admissions
Remember the deadline is 15 January 2011

Newcastle
City Council 



If you need advice or help with the admissions process or want admissions information in another format or language, please:

Contact Families Information Service
Newcastle City Council
Civic Centre
Newcastle
NE1 8PU

Phone 0191 277 4133

Email fis@newcastle.gov.uk

Website www.newcastle.gov.uk/admissions

Please include your child's full name and date of birth in any correspondence.

Newcastle Families Information Service (FIS) is an impartial service that can provide a range of information and assistance relevant to your application decision, including details of pre- and after school activities, childminders and other registered childcare in the local area. They can also help you to apply.

If you need more in-depth support, our dedicated School Choice Adviser can give you independent guidance on a range of admission issues including help with making your application. Christine Clark can be contacted via the FIS number above.

Office hours are 8.30am – 4.30pm but appointments can be arranged outside these times and at a venue convenient to you.

Newcastle Families Information Service and the School Choice Adviser will be running a number of school admission information sessions in the autumn term where you are welcome to come along for information, advice and support. Details are published online and in the separate school admissions leaflet.

If you want to use the internet for free to make your application or find out more general information about school admissions, call in to your local Customer Service Centre or Library.

Apply online at www.newcastle.gov.uk/admissions by 15 January 2011 (midnight)

Contents

Letter from the Executive Director of Children’s Services	3
Introduction and admissions timetable	4
When should my child start school?	5
How do I apply?	6
How do I decide which schools to apply to?	8
Can I apply to a faith school?	10
Admission rules for Newcastle community schools?	11
Admission rules for Roman Catholic primary schools?	14
Admission rules for Church of England schools?	24
How do you process my application?	30
How and when will I hear?	31
What happens after 1 April 2011?	31
Applying outside the normal transfer times	32
Our commitment to you	33
Use of information and data security	34
Other information to consider:	34
Information, advice and assistance	
Home to school transport	
Free school meals	
School uniform	
Insurance	
Nursery school admission	
Explanation of terms	40
Admissions 2010 – allocation of places and appeals	42
Directory of Newcastle first and primary schools	45
Application form for reception admission 2011	58

Dear Parent or Carer



Starting school is a very important and exciting part of every child's life. Newcastle schools have very high standards with dedicated staff committed to helping your child to achieve to the best of their ability.

We want to work with parents and carers to help your child take the first steps into education and ensure that starting school is a positive and rewarding experience for your child. Our aim is to help your child achieve their full potential in a safe and caring environment.

Please think carefully about the school you would like your child to attend. Read the information in this booklet and online before you make your decision. Make time to talk to your child about starting school and take the opportunity to visit our schools and speak to the staff. Think about how you will travel to school. We would encourage you to walk to school with your child or travel on public transport.

I am sure that you will be able to find a primary school in Newcastle to meet the needs of your child.

You can apply for a school place online at www.newcastle.gov.uk/admissions or use the paper form in this booklet. We will be pleased to help you with any questions you may have regarding your application. Please ensure you apply before the closing date of midnight on 15 January 2011.

I wish you and your child well as you both enter into this new and important phase of your child's life.

A handwritten signature in cursive script that reads "John Collings".

John Collings
Executive Director of Children Services

Introduction

Please read the information in this booklet carefully before you apply for a school place. The booklet is aimed at parents and carers whose children will start school in a reception class in September 2011.

It also includes details of how to apply for a place in-year, for example if you are moving to Newcastle.

There are some important points that we would ask you to remember.

Apply for a reception place in the Autumn term a year before your child is due to start.

- The closing date and time for reception admission for 2011 is midnight on **15 January 2011**. If you apply after the closing date you are unlikely to be offered a place at your preferred school.

- Applications for reception admission to school should be made online by visiting **www.newcastle.gov.uk/admissions**.

This is a secure and well tested system and the council's preferred method of application because:

- The system helps you by checking for errors.
- There is no risk that the application will get lost.
- It is quick and easy to do.
- You will get an email confirmation that your application has been received.
- A paper application form is available on request (and is enclosed in the booklet).
- Applications for in-year admissions cannot currently be made online.

Important dates for admissions to reception class

1 September 2010	The admissions process for September 2011 begins.
15 January 2011 (midnight)	You must apply online or complete the paper application form and return it to the local authority by this deadline. Medical evidence to support your application must also be submitted by this date.
1 April 2011	If you applied online, we will email you by late afternoon to tell you the outcome of your application. Letters will be posted to all parents today by second class mail.
15 April 2011	You need to accept the offer of a school place by today.
30 April 2011	Appeal forms should be returned to enable these to be heard in the first round of appeals starting in May 2011.
5 September 2011	Start of new school term.

Apply online at www.newcastle.gov.uk/admissions by 15 January 2011 (midnight)

When should my child start school?

By law, your child must be in school from the start of term following their fifth birthday. You apply for a place in the autumn a year before your child is due to start.

Children born between 1 September 2006 and 31 August 2007 may start school in September 2011.

Will my child attend full-time at school straight away?

In some schools children attend on a part-time basis for the first few weeks of the first term. You should check with individual schools about their arrangements.

In Newcastle we offer all children the opportunity of a whole year in reception regardless of their birthday. However, if you wish, it is possible to delay your child's actual start date within the same academic year until they reach statutory school age. If your child does not turn five until later in the year and you are considering delaying their admission until this time, please consider the following:

You still need to apply for a reception place by the deadline of 15 January 2011. After a place is offered you must inform the Head Teacher that you wish to defer entry to the school. Your child's place at the school will be kept open for them to join at the later date. Your start date must be within the same school year.

Your child will be placed in a class of children who have already had the opportunity to adapt to school life.

You may not be able to keep your child in nursery after their fifth birthday. This could mean there is a period of time between their birthday and the start of the next term where your child is not attending any educational setting.

In exceptional cases, such as particular special needs where it would be beneficial to a child, it may be possible for them to continue in nursery provision or be placed in a year group other than their usual one. This must be supported by

professional evidence and agreed by the school and local authority.

If you wish to discuss educating your child at home, please contact us.

Does every parent and carer who wants a reception place for their child have to apply?

Yes. All parents and carers need to make an application - even if your child's current school is linked to the school you want them to go to next or if you already have an older child at the school.

You will not be considered for a school place unless you apply.

If you do not apply, we will offer a place at the nearest available school for which your child is eligible, after considering all on time applications. This could be some distance from your home.

What if my child has special educational needs?

The majority of children with special educational needs are able to have their needs met at any mainstream school.

If your child has a Statement of Special Educational Needs (SEN) naming a particular school, you do not need to apply for a place. In all other cases, including where your child has a Statement of SEN that does not name a school, an application form should be submitted by the closing date.

If you have any specific questions or concerns, please discuss these with the schools you are considering.

How do I apply?

Newcastle City Council is your home local authority. We are required by law to co-ordinate the admission process for reception admission to state schools (including faith schools) for children of all families living in Newcastle. This includes those families who wish to apply for schools outside of the Newcastle area. The coordination arrangements ensure that every child is offered a school place by their home authority.

Apply for reception places online at www.newcastle.gov.uk/admissions

The closing date for applications is midnight on 15 January 2011.

- Applying online is quick and easy to do.
- You will get email confirmation that your application has been received.
- The system helps you by checking errors.
- There is no risk that your application will get lost in the post.
- The system has a series of security procedures which will prevent anyone seeing information they are not entitled to.
- You can check or change the details on your application up until the closing date.
- Every time you change your online application, you will receive an email confirming the status.
- The system is available 24 hours a day 7 days a week up until the closing date.
- If you apply online, we will email to let you know which school your child has been offered the day before you receive your letter..

Do I need to provide any proof to support my application?

If you are required to provide evidence to support your application, it will say so in the admissions policy.

It is extremely important that you read and understand the admissions policy for every school you are applying for.

Faith schools have different admissions criteria to Newcastle community schools. They will give priority to children of their faith.



You may be asked to provide proof of your address. This must be the permanent address at which the child is living with a parent or person with parental responsibility.

What if I want to apply for a school outside Newcastle?

If you want to apply for a reception place at a school in another local authority (for example in Northumberland) you will need to apply on the Newcastle application form.

We transfer the information to other local authorities and they will inform us if a place can be offered. We will then contact you on the outcome.

Please note that other local authorities may have different timescales for dealing with applications.

If you want to apply for a place at an independent school you will need to submit an application directly to the school.

Please let us know for our records if you live in Newcastle and are not applying to a state school.

Which address should I use for my child's application?

By law, you must use the permanent address at which the child is living with a parent or a person with parental responsibility. The address of a childminder or family members who share in the care of your child must not be used.

If you move house after 15 January 2011, you must inform us and provide proof of address as it may affect the offer of a school place.

What do I need to apply online?

You need access to the internet and an email account. The council offers free internet access at all libraries and customer service centres. Staff will be able to help you to set up a free email account.

What if I need help filling in my application?

- There is a step-by-step help guide online at www.newcastle.gov.uk/admissions
- Ring the Families Information Service on 0191 277 4133. They will help you or will put you in touch with the School Choice Adviser if you need more detailed support.
- Ask at school or your local Sure Start Children's Centre where staff may be able to help.
- Call in to your local customer service centre or library for general support.

You can make an appointment with the Families Information Service and the School Choice Adviser outside normal opening hours and at a venue to suit you.

If I apply online should I submit a paper form as well?

No. You should submit one application. Do not submit a paper application as well as an online application. Submission of duplicate information can slow the process down.

How will I know if you have received my application?

Applications made online will be acknowledged by return email. This is the most secure process as there is no risk that it will get lost in the post or input incorrectly.

If you submit a paper application form a receipt will not be provided. It is your responsibility to ensure that your application is submitted on time.

Can I change my preference?

If you apply online you can change your preference any time online until the closing date of midnight on 15 January 2011. You will get a confirmation email each time.

If you submit a paper application, write to tell us about any changes. Please include your child's full name and date of birth in any correspondence. The information must be received before the closing date. Any changes received after midnight on 15 January 2011 will be treated as a late application and will not be considered in the first round of allocations.

Will it make a difference if my application is received late?

Yes. If your application is received after 15 January 2011, it will not be processed until after we have processed forms received on time.

This means you are less likely to get a place at one of the schools listed on your form. We also cannot guarantee we will make an offer of a place on 1 April 2011.

Exceptional circumstances

If there are exceptional circumstances for your application being late such as:

- you are a lone parent and have been ill for some time,
- you have just moved into the area,
- you have just returned from abroad,

you must write and tell us why your application is late and provide proof.

We will consider each case individually and may - as an exception - process your form as though it was received on time.

If you apply after 5 February 2011 we are unable to consider a late application as an exception because the allocations process will have started.

Please be honest when applying for a school place.

You must make sure that everything you tell us is true and accurate. If there is proof that you have given us false or misleading information the offer of a school place may be withdrawn.

We may ask you to provide evidence such as proof of home address to support your application. We can ask schools, other council departments, other admission authorities and the health authority for information.

How do I decide which schools to apply to?

You can apply to first or primary schools located in any local authority on our application form, except for independent schools.

How many schools can I list?

You can list up to four schools. Each school listed counts as a separate application so you are increasing your chances of getting a school you would like by listing four.

Do I have to list more than one school?

If you only name one school on your application, and we are unable to offer your child a place there, you will be offered another school with spaces. Be aware that this might not be near your home. Listing more than one school won't affect your chances of being offered your first preference.

In which order should I list the schools?

It is important that you list your schools in order, with the school you most want first.

The local authority is required by law to operate an equal preference system for admission to schools. This means that all school preferences are assessed equally and in accordance with the oversubscription rules regardless of the order they appear on the application form. Where a place is available at more than one of

the preferred schools, the local authority will offer you the school you have listed highest.

Please understand that:

- Listing just one school on your form does not improve your chances of getting a place there.
- There is no advantage in listing the same school more than once because we can only process one application per child per school.
- Listing four schools of the same type (e.g. faith schools) does not mean that your application for any of these schools will be looked at more favourably.
- Schools will not be told where you listed them on your form.
- The applications are entered into a database which processes the rules and allocations automatically - staff do not influence results.

Demand for places at particular schools varies from year to year. It is not possible to give firm indications of your chances of being offered a place.

The fact that your neighbour's children were given a place last year does not mean you will definitely get a place this year or vice versa.

How do I get more information on different schools?

Newcastle has both a two-tier and three-tier school system.

Elsewhere in this booklet first schools are referred to as primary schools for ease of reading.



System:	Reception	Y1	Y2	Y3	Y4	Y5	Y6	Y7	Y8	Y9	Y10	Y11	Y12	Y13
Two tier	Primary school							Secondary school						
Three tier	First school					Middle school				High school				

First schools	Primary schools
<p>In the Gosforth and Dinnington areas of Newcastle children are educated in first schools from age 4 to 9 and then transfer to middle school at the end of Year 4, from age 9 to 13. From middle school children transfer to high school at the end of Year 8 (age 13).</p> <p>We have 9 first schools:</p> <ul style="list-style-type: none"> • 8 community schools • 1 Church of England school 	<p>In Newcastle children can be educated in a primary school from age 4 to 11 before transferring to secondary school at end of Year 6.</p> <p>We have 63 primary schools:</p> <ul style="list-style-type: none"> • 42 community schools • 18 Roman Catholic schools • 3 Church of England schools

To help you decide which schools to apply to, you can:

- Find schools in your area by looking in the directory section of this booklet or online at www.newcastle.gov.uk/admissions.
- Find out which is your nearest Newcastle school by using our online school finder at www.newcastle.gov.uk/admissions or ring us on 0191 277 4133.
- Read the school's admission criteria carefully.
- This is particularly important if you are applying to a faith school as different schools may have different admission rules. If the school you're interested in is popular, the admissions rules will give you a realistic idea of your child's chances of getting a place there.
- Consider the information on offers made to parents and carers in previous years as this will help you see how likely it is that your child will be offered a place at the school.

- Visit the schools you are interested in.
- Read the school prospectus and look at the school's website.
- Read academic results and Ofsted inspection reports. These are included on the school pages online at www.newcastle.gov.uk/admissions
- Consider transport arrangements to the school.
- Contact us to find out about childcare, including which after school providers pick up at the school.
- Contact us if you want to find out what activities are available after school.
- Talk to your child and to friends and neighbours with school aged children.

You may also wish to check feeder school arrangements - the schools that children normally transfer to from the first and primary schools you are interested in. We list these in the school directory.

Apply online at www.newcastle.gov.uk/admissions by 15 January 2011 (midnight)

If your child attends a feeder school they are not guaranteed a place in the receiving school if there are more applications than places available. But attendance at a feeder school is one of the rules we apply in Newcastle when allocating places at transfer age.

Can I apply for an independent school?

Independent schools set their own curriculum and admission policies. They are funded through fees paid by parents. The School Admissions and Appeals Codes do not apply to them. If you want to apply to an independent school, contact the school directly. Please be aware that if you do not apply for a state school before the closing date, and your

child is not offered a place at an independent school, you reduce your chances of obtaining a place at your preferred state school.

If you apply for a state school and an independent school and are offered a place at both, please tell us by letter or email which school place you are accepting.

Does attendance in the nursery class give my child the right to a place in reception at the same school?

Nursery class attendance is not taken into account when places are allocated for reception.

Can I apply to a faith school?

Faith schools have a religious basis and serve their local community. Anyone can apply for a place at a faith school but be aware that priority for admission is given to children of their faith.

The admission rules for faith schools are different to those for community schools. Each school has its own admission policy. You are therefore advised to carefully read the admission rules before you apply.

What is the procedure for allocating places?

Admissions to faith schools are the responsibility of the school governing body. The local authority coordinates the admissions process and will forward the applications on to the school governing body. If there are more applications than places available, the governors will apply their admission rules and allocate places accordingly up to the specified admission number.

The governors of faith schools decide the policy for allocation of places at their own school. Details of these admission rules are also included in this book.

How do I apply?

Apply for places at Newcastle faith schools online at www.newcastle.gov.uk/admissions or complete a paper application form.

You can apply for both faith schools and community schools on the same application.



Do I need to provide any evidence?

If you are applying for faith reasons, the school may ask you to provide evidence of faith. This can be a certificate of baptism, letter of support from a minister or faith leader, letter from a mosque or suitable equivalent.

Schools will contact you direct for this information. It is therefore very important that the information on your application form (such as address and telephone number) is correct and up to date. Please ensure that you submit this information in the timescale requested by the school.

Admission rules for community primary schools

Each school has a specific number of places which can be offered in reception for new children joining the school. The law says infant classes must not contain more than 30 children to one teacher.

First we offer places to children with a Statement of Special Educational Needs naming the school.

If there are more places at a school than there are applications, every child who wants a place at the school will be offered a place.

What happens if more people apply to a school than there are places available?

We need a fair way to decide which children get places at oversubscribed schools. The law says that we must use oversubscription criteria, or rules, to ensure that school places are allocated fairly. These are applied in the order shown below. We apply these equally to all applications for a school. Our aim is to meet the highest preference possible for every applicant.

Faith schools make their own admission decisions. They have different oversubscription criteria and may use different definitions. These are described in their admission policies.

What are the oversubscription criteria for community schools?

The following criteria are applied for Newcastle community primary schools when there are more applications than places available:

Rule 1 - Children in Public Care (looked after children)

This means a child who is looked after by a local authority in accordance with section 22 of the Children Act 1989 at the time the application for admission to a school is made, and who the local authority has confirmed will still be looked after at the date of admission.

Rule 2 - Children with an older sibling who will be attending the school at the time of admission

Sibling refers to brother or sister, half brother or sister, adopted brother or sister, step brother or sister, or the child of the parent or carer's partner where the children live at the same address.

Rule 3 - Children with a specific medical reason to go to the school

An example of medical need is families where one or both parents or the child has a disability that means they can only go to one school.

Supporting evidence from a doctor or other professional involved with the child must be provided. The evidence must relate specifically to the school for which the application is made and clearly demonstrate why this is the only school that can meet the needs of the child. It should also explain the difficulties that would arise if the child had to attend an alternative school.

Apply online, and then send us the proof by the closing date. Include your child's full name and date of birth in any correspondence. If you do not provide evidence of medical need we are unable to give your child higher priority.

Rule 4 - Children living nearest to the school

We decide your child's nearest school by using an electronic map measurement system (GIS). We measure a direct line from a single fixed point in the centre of your child's home address to a point in the centre of the school.

This is an objective measurement which does not take into account factors such as the safety of routes or the needs for some families to take other children to a different school or schools.

You can find out your nearest school using our online school finder at www.newcastle.gov.uk/admissions or by calling us on 0191 277 4133.

What do I do if I move house?

You should contact us as soon as possible. If you move after you have made an application but before the places are allocated it may affect the offer of a place. We will require documentary evidence of your new address.

What happens in a tie-break situation if there are two equal rights but only one available place?

In the event that two children have an equal right to one available place (such as twins) the place will be offered to the older child. The remaining child will be offered an alternative school. They will be considered under the sibling rule at the original school if further places become available.

Can I tell you my reason for wanting a particular school?

Yes you can but we can only consider information directly related to your application where it means that you qualify under an admission rule. We cannot use any other information to increase your priority for a school place.

Do I have to apply for a school in my area? I live in Newcastle but I want a school outside Newcastle – can I do this?

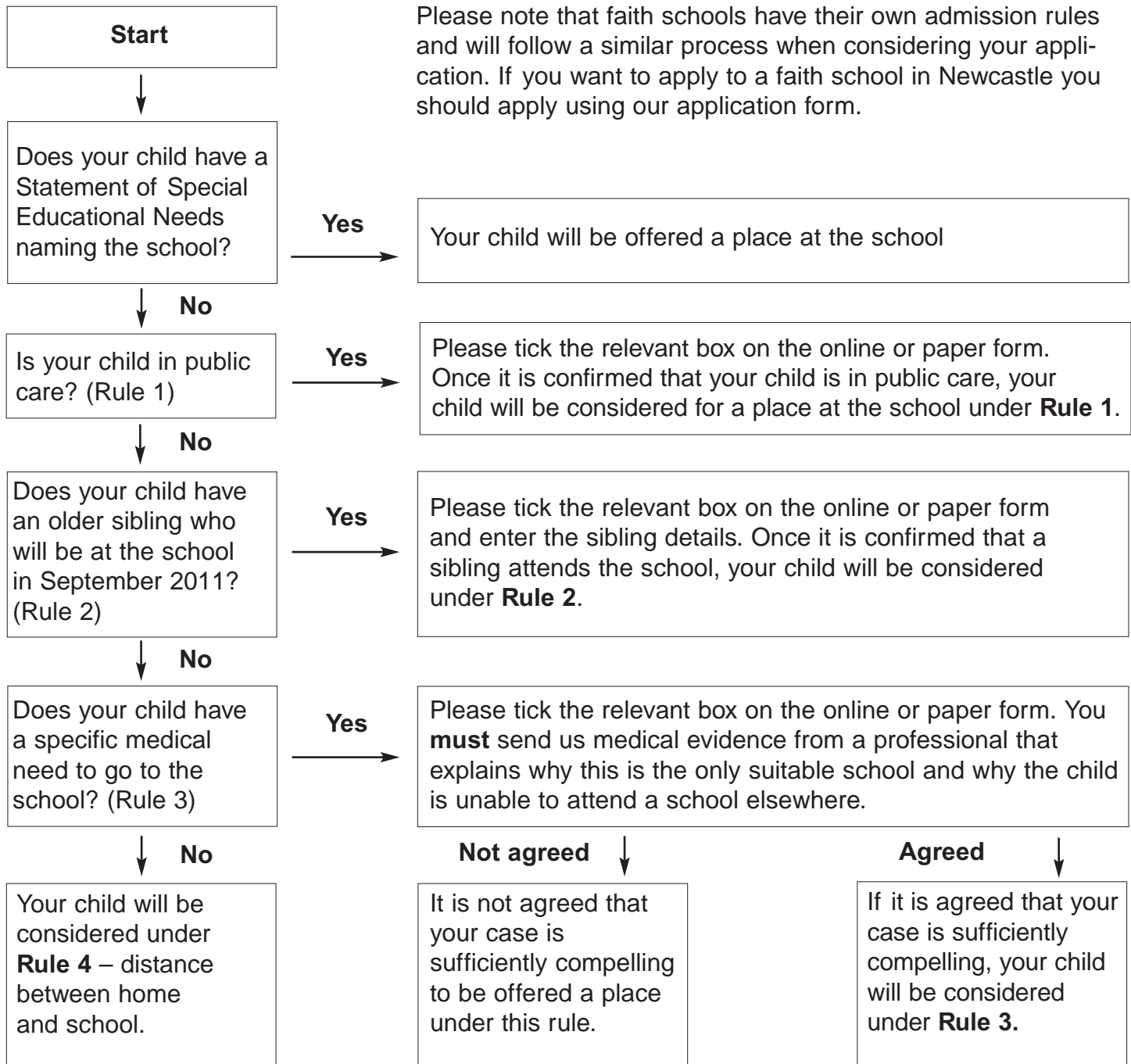
You can apply on our application form for any school in any local authority. You are advised to read each school's admission criteria carefully as different schools and local authorities may have different arrangements.

If the school you are interested in is popular, the admissions rules will give you a realistic idea of your child's chances of getting a place there.

How likely is it that my child will be offered a place at a particular school?

Before you go through the flowchart covering the admission rules for community schools, please:

- (a) consider how well your child meets the rules for each school by reading the rules,
- (b) consider whether there are likely to be more children applying to a school than there are places available by looking at the statistical information for each school.



Admission rules for Roman Catholic Primary schools

The Parish boundaries for Roman Catholic Primary schools in Newcastle are shown below

School	Published admission number	Parish(es) Served
English Martyrs' RC Primary School	60	English Martyrs, Fenham
Our Lady and St. Anne's RC	30	St. Mary's Cathedral, Newcastle
Sacred Heart RC Primary School	30	St. Robert's, Fenham
St. Albans' RC Primary School	30	St. Anthony of Padua, Walker St. Francis of Assisi, Walker
St. Bede's RC Primary School	30	St. Bede's, Newcastle
St. Catherine's RC Primary School	30	St. Dominic's, Newcastle The Holy Name, Newcastle
St. Charles RC Primary School	30	St. Charles, Gosforth
St. Cuthbert's RC Primary School	30	St. Cuthbert's, Kenton
St. Cuthbert's RC Primary School	18	St. Cuthbert's, Throckley
St. George's RC Primary School	20	St. George's, Bells Close
St. John Vianney RC Primary School	30	St. John Vianney, West Denton
St. Joseph's RC Primary School	30	St. Joseph's, Benwell
St. Lawrence's RC Primary School	30	St. Lawrence's, Byker
St. Mark's RC Primary School	30	St. Mark's, Westerhope
St. Michael's RC Primary School	30	St. Michael's, Newcastle
St. Oswald's RC Primary School	30	St. Charles', Gosforth The Sacred Heart, North Gosforth
St. Teresa's RC Primary School	30	St. Teresa's, Newcastle St. Aidan's, Benton
St. Vincent's RC Primary School	30	Our Lady and St. Vincent's, Newcastle

Apply online at www.newcastle.gov.uk/admissions by 15 January 2011 (midnight)

Admission Policy

The following Roman Catholic Primary Schools have adopted the admission policy shown below.

- Sacred Heart Primary School
- St Albans Primary
- St Bedes Primary
- St Catherines Primary
- St Charles Primary
- St Cuthberts Primary (Walbottle)
- St Georges Primary
- St Josephs Primary
- St John Vianney Primary
- St Michaels Primary
- St Marks Primary
- St Oswalds Primary
- St Vincents Primary

This Admissions policy has been formally adopted by the Governing Body of this school. In this school the Governing Body is the Admissions Authority and is responsible for determining the school's admissions policy.

The Planned Admission Number (PAN) for each reception class in September 2011 is 30. Applications will be considered on an Equal Preference basis.

How and when to apply

Applications must be made on the Newcastle Local Authority Application Form. If you are applying to the school for faith reasons you will be asked by the school to provide evidence of your faith.

All forms must be returned to the Local Authority. All application forms for Reception class, September 2011, are to be returned by 15 January 2011.

Late applications

Any applications for September admissions to Reception class received after the closing date will be accepted but considered only after those received by the closing date.

Special Educational Need

Children who have a statement of Special Educational Need which names our school will be admitted to the school.

Oversubscription Criteria

Where there are insufficient places available to meet all parental preferences, priority will be given to applications in the following order:

(First priority in each category will be given to children who will have a sibling attending the school in September 2011)

1. Catholic Children in the care of a Local Authority.
2. Catholic Children whose home address is within the Parish.
3. Catholic Children whose home address is outside of the Parish.
4. Other Children in the care of a Local Authority.
5. Children who are baptised or dedicated members of other Christian Churches as recognised by Churches Together in England (see note 4).
6. Children of other Faith traditions.
7. Other children.

If applicants are seeking admission under criteria 5 or 6 above, they will be asked for a letter of support to confirm their church membership from their minister or Faith leader.

Tie-breaker

Where there are places available for some, but not all applicants within a particular criterion, distance from home address to the school will be the deciding factor, with preference being given to those whose home address is nearest to the school, when measured by NEMO (Newcastle Maps Online) available via www.newcastle.gov.uk. NEMO uses the measure of the straight line distance from a fixed point at the school to a point in the centre of the home address of the child, using the Local Land and Property Gazetteer or a suitable alternative geographical information system.

Multiple births

Where there is only one place available, then through consultation with the parent/carer, the place will be offered to the chosen child.

Right of appeal

Where a parent has been notified that a place is not available for a child, every effort will be made to help the parent to find a place in a

suitable alternative school. Parents who are refused a place have a statutory right of appeal. The Local Authority handles the process on behalf of the Governing Body. Further details of the appeals process are available by contacting the Admissions Team at Newcastle Civic Centre, 0191 232 8520.

Home address

It is the child's address which will be used in applying the admission criteria. This means that, when stating your choice of school, you should give the child's address at the time of application. The address of childminders or other family members who may share in the care of your child should not be quoted as the home address.

If you are offered a place you will be asked for proof of the child's address, for example, a child benefit statement.

False information

Where the Governing Body has made an offer of a place at the school on the basis of fraudulent and intentionally misleading information from an applicant, which has effectively denied a place to a child with a stronger claim to a place at the school, the offer of a place will be withdrawn.

Where a child starts attending the school on the basis of fraudulent and intentionally misleading information, the place may be withdrawn by the Governing Body, depending on the length of time the child has attended the school.

Where a place or an offer has been withdrawn, the application will be reconsidered by the Governing Body and a right of independent appeal will be offered if the application is then refused.

Waiting lists

If your child has been refused admission to Reception class, a waiting list is available where priority will be given according to the above criteria based on the most recent information provided. The school or local authority must be informed of any significant change in circumstances. The waiting list for September 2011 Reception class will be open until at least the end of the January 2012. Each school will operate its own waiting list for other year groups. For further information contact the Chair of Governors at the school address.

Notification of reception class places

Places will then be allocated by strict application of the above criteria. Letters will be sent to parents/guardians notifying them as to whether or not their child has been allocated as notified by the Local Authority.

Admission Policy – English Martyrs Primary School

**English Martyrs' RC Primary School
Beaufront Gardens Fenham
Newcastle upon Tyne
NE5 2SA**

This Admissions policy has been formally adopted by the Governing Body of this school. In this school the Governing Body is the Admissions Authority and is responsible for determining the school's admissions policy.

Parents are asked to note that admission to a Nursery unit is no guarantee of entry into the main school.

The Planned Admission Number (PAN) for reception classes and every other year group in September 2011 is 60.

Applications will be considered on an Equal Preference basis.

How and when to apply

Applications must be made on the Newcastle Local Authority Application Form. Parents applying to a Voluntary Aided Catholic school should also complete the supplementary information form (Part B).

All forms must be returned to the Local Authority. All application forms for Reception class, September 2011, are to be returned by 15 January 2011.

Late applications

Any applications for September admissions to Reception class received after the closing date will be accepted but considered only after those received by the closing date.

Special Educational Need

Children who have a statement of Special Educational Need which names our school will be admitted to the school.

Oversubscription Criteria

Where there are insufficient places available to

meet all parental preferences, priority will be given to applications in the following order:

(First priority in each category will be given to children who will have a sibling attending the school in September 2011).

1. Catholic Children in the care of a Local Authority.
2. Catholic Children whose home address is within English Martyrs' Parish.
3. Catholic Children whose home address is outside of English Martyrs' Parish
4. Other Children in the care of a Local Authority.
5. Children who are baptised or dedicated members of other Christian Churches as recognised by Churches Together in England (see note 4).
6. Children of other Faith traditions.
7. Other children.

If applicants are seeking admission under criteria 5 or 6 above, they will be asked for a letter of support to confirm their church membership from their minister or Faith leader.

Tie-breaker

Where there are places available for some, but not all applicants within a particular criterion, distance from home address to the school will be the deciding factor, with preference being given to those whose home address is nearest to the school, when measured by NEMO (Newcastle Maps Online) available via www.newcastle.gov.uk. NEMO uses the measure of the straight line distance from a fixed point at the school to a point in the centre of the home address of the child, using the Local Land and Property Gazetteer or a suitable alternative geographical information system.

Multiple births

Where there is only one place available, then through consultation with the parent/carer, the place will be offered to the chosen child.

Right of appeal

Where a parent has been notified that a place is not available for a child, every effort will be made to help the parent to find a place in a suitable alternative school. Parents who are refused a place have a statutory right of appeal.

The Local Authority handles the process on behalf of the Governing Body. Further details of the appeals process are available by contacting the Admissions Team at Newcastle Civic Centre, 0191 232 8520.

Home address

It is the child's address which will be used in applying the admission criteria. This means that, when stating your choice of school, you should give the child's address at the time of application. The address of childminders or other family members who may share in the care of your child should not be quoted as the home address.

If you are offered a place you will be asked for proof of the child's address, for example, a child benefit statement.

False information

Where the Governing Body has made an offer of a place at the school on the basis of fraudulent and intentionally misleading information from an applicant, which has effectively denied a place to a child with a stronger claim to a place at the school, the offer of a place will be withdrawn.

Where a child starts attending the school on the basis of fraudulent and intentionally misleading information, the place may be withdrawn by the Governing Body, depending on the length of time the child has attended the school.

Where a place or an offer has been withdrawn, the application will be reconsidered by the Governing Body and a right of independent appeal will be offered if the application is then refused.

Waiting lists

If your child has been refused admission to Reception class, a waiting list is available where priority will be given according to the above criteria based on the most recent information provided. The school or local authority must be informed of any significant change in circumstances. The waiting list for September 2011 Reception class will be open until at least the end of the January 2012. Each school will operate its own waiting list for other year groups. For further information contact the Chair of Governors at the school address.

Notification of reception class places

Places will then be allocated by strict application of the above criteria. Letters will be sent to parents/guardians notifying them as to whether or not their child has been allocated a place.

Admission Policy – Our Lady and St Annes Primary School

This admissions policy has been formally adopted by the Governing Body of this school. In this school the Governing Body is the Admissions Authority and is responsible for determining the school's admissions policy. Parents are asked to note that admission to a Nursery unit is no guarantee of entry into the main school.

The Planned Admission Number (PAN) for reception class September 2011 and every other year group in September 2011 is 30. Applications will be considered on an Equal Preference basis.

How and when to apply

Applications must be made on the Newcastle Local Authority Application Form. Parents applying to a Voluntary Aided Catholic school should also complete the supplementary information section.

All forms must be returned to the Local Authority. All application forms for Reception class, September 2011, are to be returned by 15 January.

Late applications

Any applications for September admissions to Reception class received after the closing date will be accepted but considered only after those received by the closing date.

Special Educational Need

Children who have a statement of Special Educational Need which names our school will be admitted to the school.

Oversubscription criteria

Where there are insufficient places available to meet all parental preferences, priority will be given to applications in the following order:

First priority in each category will be given to children who will have a sibling (see note 3) attending the school in September 2011.

1. Catholic Children in the care of a Local Authority.
2. Catholic Children whose home address is within St. Mary's Cathedral Parish.
3. Catholic Children whose home address is outside St. Mary's Cathedral Parish.
4. Other children in the care of a Local Authority.
5. Other children who will have a sibling attending the school at time of admission.
6. Children who are baptised or dedicated members of other Christian Churches as recognised by Churches Together in England (see note 4).
7. Children of other Faith traditions.
8. Other children.

If applicants are seeking admission under criteria 6 or 7 above, they will be asked for a letter of support to confirm their church membership from their minister or Faith leader.

Tie-breaker

Where there are places available for some, but not all applicants within a particular criterion, distance from home address to the school will be the deciding factor, with preference being given to those whose home address is nearest to the school, when measured by NEMO (Newcastle Maps Online) available via www.newcastle.gov.uk. NEMO uses the measure of the straight line distance from a fixed point at the school to a point in the centre of the home address of the child, using the Local Land and Property Gazetteer or a suitable alternative geographical information system.

In the event of an equal right to one available place, (such as twins or children at different addresses living the exact distance from school) the place will be held open until two places become available and both children can be admitted. Places will be offered at an alternative school until two places become available at the preferred school.

Right of appeal

Where a parent has been notified that a place is not available for a child, every effort will be made to help the parent to find a place in a suitable alternative school. Parents who are refused a place have a statutory right of appeal. The Local Authority handles the process on behalf of the Governing Body. Further details of

the appeals process are available by contacting the Admissions Team at Newcastle Civic Centre, 0191 232 8520.

Home address

It is the child's address which will be used in applying the admission criteria. This means that, when stating your choice of school, you should give the child's address at the time of application. The address of childminders or other family members who may share in the care of your child should not be quoted as the home address.

If you are offered a place you will be asked for proof of the child's address, for example, a child benefit statement.

False information

Where the Governing Body has made an offer of a place at the school on the basis of fraudulent and intentionally misleading information from an applicant, which has effectively denied a place to a child with a stronger claim to a place at the school, the offer of a place will be withdrawn.

Where a child starts attending the school on the basis of fraudulent and intentionally misleading information, the place may be withdrawn by the Governing Body, depending on the length of time the child has attended the school.

Where a place or an offer has been withdrawn, the application will be reconsidered by the Governing Body and a right of independent appeal will be offered if the application is then refused.

Waiting lists

If your child has been refused admission to Reception class, a waiting list is available where priority will be given according to the above criteria based on the most recent information provided. The school or local authority must be informed of any significant change in circumstances. The waiting list for September 2011 Reception class will be open until 1 January 2012. Each school will operate its own waiting list for other year groups. For further information contact the Chair of Governors at the school address.

Notification of reception class places

Places will then be allocated by strict application of the above criteria. Letters will be

sent to parents/guardians notifying them as to whether or not their child has been allocated a place on 1 April 2011.

Admission Policy – St Cuthberts Primary School (Kenton)

This Admissions policy has been formally adopted by the Governing Body of this school. In this school the Governing Body is the Admissions Authority and is responsible for determining the school's admissions policy. Parents are asked to note that admission to a Nursery unit is no guarantee of entry into the main school.

The Planned Admission Number (PAN) for reception class September 2011 and every other year group in September 2010 is 30. Applications will be considered on an Equal Preference basis.

How and when to apply

Applications must be made on the Newcastle Local Authority Application Form. Parents applying to a Voluntary Aided Catholic school should also complete the supplementary information form (Part B).

All forms must be returned to the Local Authority. All application forms for Reception class, September 2011, are to be returned by 15 January 2011.

Late applications

Any applications for September admissions to Reception class received after the closing date will be accepted but considered only after those received by the closing date.

Special Educational Need

Children who have a statement of Special Educational Need which names our school will be admitted to the school.

Oversubscription criteria

Where there are insufficient places available to meet all parental preferences, priority will be given to applications in the following order:

1. Catholic Children in the care of a Local Authority.
- 2a. Catholic Children whose home address is within St. Cuthbert's Parish who will have a sibling attending the school at time of admission.

- 2b. Catholic Children whose home address is within St Cuthbert's Parish.
- 3a. Catholic Children whose home address is outside St. Cuthbert's Parish who will have a sibling attending the school at time of admission.
- 3b. Catholic Children whose home address is outside St. Cuthbert's Parish.
4. Other children in the care of a Local Authority.
5. Children who are baptised or dedicated members of other Christian Churches as recognised by Churches Together in England who will have a sibling attending the school at the time of admission (see note 4).
6. Children of other Faith traditions who will have a sibling attending the school at time of admission.
7. Other children who will have a sibling attending the school at time of admission.
8. Children who are baptised or dedicated members of other Christian Churches as recognised by Churches Together in England (see note 4).
9. Children of other Faith traditions.
10. Other children.

If applicants are seeking admission under criteria 5, 6, 8 or 9 above, they will be asked for a letter of support to confirm their church membership from their minister or Faith leader.

Tie-breaker

Where there are places available for some, but not all applicants within a particular criterion, distance from home address to the school will be the deciding factor, with preference being given to those whose home address is nearest to the school, when measured by NEMO (Newcastle Maps Online) available via www.newcastle.gov.uk. NEMO uses the measure of the straight line distance from a fixed point at the school to a point in the centre of the home address of the child, using the Local Land and Property Gazetteer or a suitable alternative geographical information system.

Multiple births

Where there is only one place available, then through consultation with the parent/carer, the place will be offered to the chosen child.

Right of appeal

Where a parent has been notified that a place

is not available for a child, every effort will be made to help the parent to find a place in a suitable alternative school. Parents who are refused a place have a statutory right of appeal. The Local Authority handles the process on behalf of the Governing Body. Further details of the appeals process are available by contacting the Admissions Team at Newcastle Civic Centre, 0191 232 8520.

Home address

It is the child's address which will be used in applying the admission criteria. This means that, when stating your choice of school, you should give the child's address at the time of application. The address of childminders or other family members who may share in the care of your child should not be quoted as the home address.

If you are offered a place you will be asked for proof of the child's address, for example, a child benefit statement.

False information

Where the Governing Body has made an offer of a place at the school on the basis of fraudulent and intentionally misleading information from an applicant, which has effectively denied a place to a child with a stronger claim to a place at the school, the offer of a place will be withdrawn.

Where a child starts attending the school on the basis of fraudulent and intentionally misleading information, the place may be withdrawn by the Governing Body, depending on the length of time the child has attended the school.

Where a place or an offer has been withdrawn, the application will be reconsidered by the Governing Body and a right of independent appeal will be offered if the application is then refused.

Waiting lists

If your child has been refused admission to Reception class, a waiting list is available where priority will be given according to the above criteria based on the most recent information provided. The school or local authority must be informed of any significant change in circumstances. The waiting list for September 2011 Reception class will be open until at least the end of the January 2012. Each school will

operate its own waiting list for other year groups. For further information contact the Chair of Governors at the school address.

Notification of reception class places

Places will then be allocated by strict application of the above criteria. Letters will be sent to parents/guardians notifying them as to whether or not their child has been allocated a place. If applicants are seeking admission in category 1, 2 or 3 above, they may be asked to provide evidence that the child is a baptised Roman Catholic or has been formally received into the Roman Catholic Church.

If applicants are seeking admission in category 6 and 7 above, they may be asked for evidence that the child is baptised or a letter of support from their minister or Faith leader, or suitable equivalent.

Admission Policy - St Lawrences Primary School

This Admissions policy has been formally adopted by the Governing Body of the above school. The Governing Body is the Admissions Authority and is responsible for determining the school's admissions policy.

The Planned Admission Number (PAN) for the Reception class in September 2011 is 30.

The Admissions Policy Criteria will be applied on an Equal Preference basis.

How and when to apply

Applications must be made on the Local Authority Common Application Form. Parents applying for faith reasons will be asked by the school to provide evidence of their faith. All forms must be returned by the closing date 15 January 2011

Late applications

Any applications received after the closing date will be accepted but considered only after those received by the closing date.

Oversubscription criteria

Children who have a statement of Special Educational Need which names our school will be admitted to the school.

Parents are asked to note that admission to the Nursery unit is no guarantee of entry into the main school.

Where there are insufficient places available to meet all parental preferences, priority will be given to applications in the following order:

1. Catholic Children who are in the care of a Local Authority.
2. Catholic Children whose home address is within the boundaries of St Lawrence's Parish with a sibling already attending the school at the time of admission.
3. Catholic Children whose home address is within the boundaries of St Lawrence's Parish who do not have a sibling already attending the school at the time of admission.
4. Catholic Children whose home address is outside of the boundaries of St Lawrence's Parish with a sibling already attending the school at the time of admission.
5. Catholic Children whose home address is outside of the boundaries of St Lawrence's Parish who do not have a sibling already attending the school at the time of admission.
6. Other Children who are in the care of a Local Authority.
7. Children, who are baptised or dedicated members of other Christian Churches as recognised by Churches Together in England (see note 4) with a sibling already attending the school at the time of admission.
8. Children, who are baptised or dedicated members of other Christian Churches as recognised by Churches Together in England (see note 4) who do not have a sibling already attending the school at the time of admission.
9. Children of other Faith traditions who have a sibling already attending the school at the time of admission.
10. Children of other Faith traditions who do not have a sibling at the school.
11. Other children.

If applicants are seeking admission under any of criteria 7, 8, 9 or 10 above, they will be asked for a letter of support from their minister or Faith leader, or suitable equivalent. For Christian applicants a baptismal certificate should be provided.

Tie-breaker

Where there are places available for some, but not all applicants within a particular criterion, distance from home address to the school entrance will be the deciding factor, with preference being given to those whose home address is nearest to the school, when measured by NEMO (Newcastle Maps Online) available via www.newcastle.gov.uk. NEMO uses the measure of the straight line distance from a fixed point at the school to a point in the centre of the home address of the child, using the Local Land and Property Gazetteer or a suitable alternative geographical information system.

Right of appeal

Where a parent has been notified that a place is not available for a child, every effort will be made to help the parent to find a place in a suitable alternative school. Parents who are refused a place have a statutory right of appeal. Further details of the appeals process are available by writing to the Chair of Governors at the school address.

Home address

It is the parental address which will be used in applying the admission criteria. This means that, when stating your choice of school, you should give the parental/guardian address at the time of application. The address of childminders or other family members who may share in the care of your child should not be quoted as the home address.

False information

Where the Governing Body has made an offer of a place at the school on the basis of fraudulent and intentionally misleading information from a parent, which has effectively denied a place to a child with a stronger claim to a place at the school, the offer of a place will be withdrawn.

Where a child starts attending the school on the basis of fraudulent and intentionally misleading information, the place may be withdrawn by the Governing Body, depending on the length of time the child has attended the school.

Where a place or an offer has been withdrawn, the application will be reconsidered by the Governing Body and a right of independent

appeal will be offered if the application is then refused.

Waiting lists

If your child has been refused admission, a waiting list is available where priority will be given according to the above criteria based on the information provided at the time of application. The waiting list will be open until the end of the Autumn term.

Application information

Formal written applications for admission must be made on the form provided by the Local Authority and returned to them by 15th January. Places will then be allocated by strict application of the above criteria, with no reference to the date of application. Parents will be notified as to whether or not their child has been allocated a place.

Admission Policy – St Teresas Primary School

The Governing Body of St Teresa's Catholic Primary School is the Admissions Authority for this school.

The Governing Body, as the admission authority, has determined that it will acknowledge applications as Equal Preference.

The Governing Body intends to admit up to 30 pupils to the Reception year group in September 2011. This number will apply to the Reception year and every other year in school. Where there are insufficient places to meet all parental preferences priority will be given to applicants in the following order:

Note: First priority in each category will be given to children who will have older siblings (see Note 3 for definition of sibling) attending the school in September 2011

1. Children who are baptised as Catholics (see additional note 1 for definition of Catholic) or who have been formally received into the Catholic Church and who are Looked After Children (Children in the care of the Local Authority – see additional note 2 for definition of Looked After Child)
2. Children who are baptised as Catholics or who have been formally received into the church from within the parish boundaries of St Teresa's and St Aidan's.

3. Children who are baptised as Catholics or who have been formally received into the church from outside the parish boundaries of St Teresa's and St Aidan's.
4. Other children who are Looked After Children (Children in the care of the Local Authority)
5. Children who are baptised or dedicated members of other Christian churches (as recognised by Churches Together in England (see note 8). Governors will request a letter of support from a Minister of Religion.
6. Children of any faith tradition. Governors will request a letter of support from a Minister of Religion.
7. Other children

Timetable for applications

Applications are received from and returned to the Local Authority by the date stipulated within the application pack. Application forms will be available from the beginning of the autumn term to be returned by the stipulated date. Parents will be offered places on the date stipulated in the application pack. Late applications will be dealt with in accordance with LA Scheme.

Waiting Lists will be dealt with in accordance with LA Scheme.

Additional notes

1. Definition of Catholic

Children who have been baptised as Catholics or have been formally received into the Catholic Church. All applicants seeking admission under criteria 1 – 5 will be asked to provide evidence that the child has been baptised as a Catholic or has been received into the Catholic Church. A baptismal certificate or a letter from their priest confirming their baptism or reception into the Catholic Church will suffice.

2. Definition of children in the care of a Local Authority

A child, who is looked after by a Local Authority in accordance with Section 22 of the Children's Act 1989(b) at the time application for admission to the school is made and who the Local Authority can confirm, will still be looked after at time of admission to the school.

3. Definition of sibling

Sibling refers to brother or sister, half brother or sister, adopted brother or sister, step brother or sister, or the child of the parent/carer's partner where the child for whom the school place is

sought is living in the same family unit at the same address as that sibling.

4. Home address

It is the parental address which will be used in applying the admission criteria. This means that, when stating your choice of school, you should give the parental/guardian address at the time of application. The address of childminders or other family members who may share in the care of your child should not be quoted as the home address.

5. Tie-breaker

Where there are places available for some, but not all applicants within a particular criterion, distance from home address to the school entrance will be the deciding factor, with preference being given to those whose home address is nearest to the school, when measured by NEMO (Newcastle Maps Online) available via www.newcastle.gov.uk. NEMO uses the measure of the straight line distance from a fixed point at the school to a point in the centre of the home address of the child, using the Local Land and Property Gazetteer or a suitable alternative geographical information system.

6. Waiting lists

If your child has been refused admission, you can request that your child's name be placed on the school's waiting list which is held centrally at the Civic Centre. Priority will be given according to the above criteria based on the information provided at the time of application. The waiting list will be open until the end of the autumn term after which it will cease to exist. Parents should note that any application made which attracts higher criteria will take priority over any lower criteria application. Parents/carers should be aware that once the waiting list ceases to exist, it is their responsibility to contact the school to ascertain if any vacancy exists in Reception class.

7. Special Educational Needs

Children who have statement of Special Educational Need which names our school will be admitted to the school.

8. Churches Together in England

(See www.churches-together.org.uk for further details on membership)

- The Baptist Union
- British Antiochian Orthodox Church
- Cherubim and Seraphim Council of Churches
- The Church of England
- Church of God Prophecy
- Church of Scotland (in England)
- Congregational Federation
- Coptic Orthodox
- Council of African and Caribbean Churches
- Council of Oriental Orthodox Churches
- Ichthus Christian Fellowship
- Independent Methodist Churches
- Joint Council for Anglo-Caribbean Churches
- Lutheran Council of Great Britain
- The Methodist Church
- United Reform Church
- Wesleyan Holiness Church

False information

1. Where the Governing Body has made an offer of a place at the School on the basis of fraudulent or intentionally misleading application from a parent, which has effectively denied a place to a child with a stronger claim to a place at the School, the offer of a place will be withdrawn.

2. Where a child starts attending the School on the basis of fraudulent and intentionally misleading information the place may be withdrawn by the Governing Body, depending on the length of time the child has been at the School.

3. Where a place or an offer has been withdrawn, the application will be re-considered, by the Governing Body and a right of independent appeal offered if the place is refused.

Where a parent has been notified that a place is not available for a child, every effort will be made by the appropriate authority to help the parent to find a place in a suitable, alternative school. Parents who are refused a place for their child have a statutory right of appeal. Further details of the appeals process are available in writing to the Chair of Governors at the school address.

Please note that admission to St Teresa's Catholic Primary School that operates an Equal Preference System does not guarantee admission to St Mary's Comprehensive, which has its own admission policies.

Where a child fulfils the admissions criteria of more than one school listed on the Local Education Authority's Parental Preference Form, the governing body of St Teresa's School recognises the Local Authority's responsibility to apply the process contained within the "School Admission Code of Practice". Therefore, the Local Authority, acting on behalf of the school's governing body, will allocate a place at the "Offering school" listed highest on the Parental Preference Sheet".

Admission rules for Church of England schools

Admission Policy – Archbishop Runcie First School

School Ethos Statement

"In recognition of its historic foundation, the school will preserve and develop its religious character in accordance with the principles of the Church of England and in partnership with the Church at parish and diocesan level.

The school aims to serve its community by providing an education of the highest quality within the context of Christian belief and practice. It encourages an understanding of the meaning and significance of faith, and promotes Christian values through the experience it offers to all its pupils."

We ask all parents/carers applying for a place here to respect this ethos and its importance to the school community. This does not affect the right of parents/carers who are not of the faith of this school to apply for and be considered for a place.

The governing body of Archbishop Runcie Church of England (Voluntary Aided) First School is the Admissions Authority for the school and they intend to admit up to thirty pupils to the reception year group in September 2011. This arrangement follows consultation between the governing body, Local Authority, all other schools in the area and all other Admission Authorities in the area.

Apply online at www.newcastle.gov.uk/admissions by 15 January 2011 (midnight)

The school is open to receive applications for admissions from the parents/ carers of all children. We are required by law to admit children with statements of special educational need, which name this school.

In the event of the number of applications exceeding the number of places available priority will be given to applications in the order of priority indicated below.

Over-subscription Criteria

1. Children who are in the care of the Local Authority (LAC).
2. Children who have a social or medical need requiring attendance at this school, above all other children. This must be evidenced by a letter from a registered health professional (e.g. doctor, social worker) which sets out clearly and objectively the nature of the needs and why attendance at this school would be essential for the child.
3. Children with a sibling* at the school at the time of admission or a sibling who will have transferred from Archbishop Runcie First School to Year 5 at the feeder link school (Gosforth Central Middle School) at the time of admission.
4. Children of parents / carers who have provided a letter from their Vicar confirming that they worship regularly (at least once a month) at Gosforth, All Saints or Gosforth, St Nicholas Parish Churches.
5. Children of parents / carers of other Christian denominations, of other faiths or of no faith.

*Sibling

Sibling refers to brother or sister, half brother or sister, adopted brother or sister, step brother or sister, or the child of the parent/carer's partner where the child for whom the school place is sought is living in the same family unit at the same address as that sibling.

Tie breaker

Where there are places available for some but not all applicants within a particular criterion, distance from home to school will be the deciding factor. Distance will be measured in miles using a straight line from the front door of the child's address to the middle of the school using the Newcastle Maps online (the Local Land and Property Gazetteer) or a suitable alternative system, with those living closer to

the school receiving the higher priority. Applications from outside the local authority area covered by this system will be measured in miles using a straight line from the front door of the child's address to the middle of the school on an Ordnance Survey map of the area.

Evidence of church participation

Parents/carers wishing to have an application considered under criterion 4 **must** provide, with their application, a letter signed by the Vicar of the church in question showing that their application satisfies the criterion. If a letter is not provided with the application, the application will be considered under criterion 5.

Waiting list

If you are not offered a Reception class place, the Local Authority will keep your child's name on a waiting list until 31st December 2010. Following that date, the school office will maintain a waiting list of applicants. In the event of a place becoming available in the appropriate class during the year and there being more applicants on the waiting list than places available, the selection criteria and tie breaker indicated above will apply.

Notes

- If a place has been offered, parents/carers are asked to let the Headteacher know whether their child has a disability. The school will make every reasonable adjustment to ensure that disabled children are not discriminated against in their access to education.
- Applicants seeking admission under criterion 2 above **must** provide appropriate evidence, e.g. a letter from a doctor or social worker. The governors must be satisfied that there is a specified social or medical reason which makes attendance at this school essential.
- Nursery admissions are entirely separate (there is a separate admissions policy) and parents are asked to note that attendance at the school's nursery **does not** guarantee a place in the reception class.
- Parents/carers who are refused a place have a statutory right of appeal. Further details of the appeals process are available from the Local Authority School Admissions and Transfers Team

- If a place is offered on the basis of false information (e.g. address or Church participation) or if parents/carers do not respond within the stated timescale to the offer of a place the governing body may withdraw their offer.

Online or written applications for admission must be returned to the Local Authority by 15 January 2011. Places will then be allocated by strict application of the above criteria, with no reference to the date of application.

Applications received after the closing date will be classified as late and considered after all of the applications received on time. The Local Authority will notify parents as to whether or not their child has been allocated a place

Admission Policy – Christ Church Primary School

The governing body of Christ Church C E voluntary aided Church of England School is the Admissions Authority for the school and they intend to admit up to 20 pupils to the reception year group in September 2011/12. This arrangement follows consultation between the governing body, the LA, all other schools in the area and all other Admission Authorities in the area.

The school is open to receive applications for admissions from the parents of all children. We must give priority to those with a statement of special educational needs, which names the school.

In the event of the number of applications exceeding the number of places available priority will be given to applications in the order of priority indicated below.

Over-subscription Criteria

1. Children who are in Local Authority Care.
2. Children with a brother or sister at the school at the time when they would be admitted to the school.
3. Children of parents worshipping regularly [weekly] and frequently at the Parish Church of Christ Church or St. Ann's [see map attached].
4. Children who have special medical needs or other special circumstances, (supported by medical/professional opinion).

5. Children who live in the Parishes of Christ Church or St. Ann's [see map attached].
6. Children of parents worshipping regularly [weekly] in another Christian Church who wish their child to attend this school because of its Christian foundation. Applications need to be supported with a letter from a minister of religion.
7. Other children.

Tie breaker

Where there are places available for some but not all applicants within a particular criterion, distance from home to school will be the deciding factor. Distance will be measured as the crow flies from the front door of the child's home address [including flats] to the main entrance of the school [using the local Authority's computerised measuring system]. Those living closest to the school will receive the highest priority.

Waiting list

The school office will maintain a waiting list of applicants which will be kept until the 31st December. In the event of a place becoming available in the appropriate class during the year and there being more applicants on the waiting list than places available, the selection criteria and tie breaker indicated above will apply.

Notes

- Parents are asked to let the head teacher know at the time of application whether their child has a disability. Parents should be assured that the nature of the disability is not grounds for refusing the application. The school will make every reasonable adjustment to ensure that disabled children are not put at a substantial disadvantage in accessing a full curriculum and that they will not be treated less favourably, without reasonable justification, than their able-bodied peers.
- Brother and Sister means blood brother or sister, half brother or sister, adopted brother or sister, step brother or sister, or the child of a parent's/carer's partner – in every case the child should be living in the same family unit at the same address.
- If applicants are seeking admission under criterion 4 above they will be asked to provide appropriate evidence, e.g. a letter from a doctor or specialist. The governors must be

satisfied that there is a specified medical reason which makes attendance at this school essential.

- If applicants are seeking admission under criterion 3 and 6 above they will be asked to provide evidence that they worship regularly and frequently, e.g. a letter from the incumbent.
- A map showing the parish boundaries can be inspected at the school office.
- Nursery admissions are entirely separate and parents are asked to note that attendance at the school's nursery does not guarantee a place in the reception class.
- Parents who are refused a place have a statutory right of appeal. Further details of the appeals process are available by writing to the Chair of Governors at the school address.
- If a place is offered on the basis of false information (e.g. address or Church attendance) or if parents do not respond within the stated timescale to the offer of a place the governing body reserves the right to withdraw their offer.

The school finds it very helpful to have an early indication of the number of children to be admitted to the reception class the following September. However, it must be stressed that formal written applications for admission must be made on the form provided by the Local Education Authority and returned to the Local Authority by the stated date. Places will then be allocated by strict application of the above criteria, with no reference to the date of application. Parents will be notified as to whether or not their child has been allocated a place by the Local Authority on the 1st March 2011.

Admission Policy – St Anthony's Primary School

Vision for our school

At St Anthony's we believe that God loves us and we are made in God's image.

We work together to provide a safe and happy school where the Christian values of love, respect and forgiveness surround us and every child is valued.

Everyone will have the confidence to make good choices, achieve beyond their expectations and share the riches of God's creation.

The Governing Body of St Anthony's Voluntary Aided Church of England School is the Admissions Authority for the school and they intend to admit up to 30 pupils to the reception year group in September 2011/12. This arrangement follows consultation between the governing body, the LA, all other schools in the area and all other Admission Authorities in the area.

The school is open to receive applications for admissions from the parents of all children. We must give priority to children with statements of special educational needs that names the school. In the event of the number of applications exceeding the number of places available priority will be given to applications in rank order indicated below

1. Children in care. (The definition of a "child in care" is a person under the age of 18 who is provided with accommodation by a local council, acting in its social services capacity, for a continuous period of more than 24 hours, by agreement with the parents or is the subject of a relevant court order under Part 1V of the Children's Act 1989. Children looked after under an agreed series of short term placements (respite care) are excluded)
2. Children who have special medical needs or other special circumstances supported by medical/professional opinion – see note 3
3. Children who have a sibling on the role of the school at the time of admission (A sibling refers to brother or sister, step brother or sister, or the child of the parent/carer's partner where the child for whom the school place is sought is living in the same family unit at the same address as the sibling)
4. Children who live in the Parishes of:
 - Byker St Anthony,
 - Byker St Martin and Walkergate St Oswald,
 - Byker St Michael with St Lawrence,
 - Byker St Silas,
 - Newcastle St. Gabriel,
 - Newcastle St. Francis, or
 - Walker Christ Church in the Diocese of
 - Newcastle upon Tyne

5. Children of parents/carers worshipping regularly and frequently at the Parish Church of St. Anthony's, Byker. (Regularly and frequently is defined as attendance at least once per month over the last twelve months. It is sufficient for just one parent/carer to attend. **See note 2**)
6. Children of parents worshipping in another Christian Church who wish their child to attend this school because of its Christian foundation. (Applications should be supported by a letter from the minister of the relevant church)
7. Children who have compelling medical or social needs (supported fully in writing by medical/professional).

NB. A parent is any person who has parental responsibility for, or who is the legal guardian of, the child. Where admission arrangements refer to "parents' attendance at church" it is sufficient for just one parent to attend. "Family members" include only parents, as defined above, and siblings

Tie breaker

When deciding between applications with otherwise equal entitlement to a place, the Governors will take into account where applicants live and give priority to applicants whose home address is nearest to the school when measure in a straight line 'as the crow flies from the front door of the child's home address to the main gate of the school'. Those living closer to school will receive the higher priority.

Waiting list

The school office will maintain a waiting list of applicants that will be kept until 31st December. In the event of a place becoming available in the appropriate class during the year and there being more applicants on the waiting list than places available, the selection criteria and tie breaker indicated above will apply.

Notes

- Parents are asked to let the head teacher know at the time of application whether their child has a disability. Parents should be assured that the nature of the disability is not grounds for refusing the application. The school will make every reasonable adjustment to ensure that disabled children are not put at

- a substantial disadvantage in accessing a full curriculum and that they will not be treated less favourably, without reasonable justification, than their able-bodied peers.
- If applicants are seeking admission under criterion of living in the Parish or worshipping regularly and frequently at a Parish Church as above, they will be asked to provide evidence that they worship regularly and frequently, e.g. a letter from the incumbent.
- If applicants are seeking admission under criterion of special medical needs or other special circumstances, they will be asked to provide appropriate evidence, e.g. a letter from a doctor or specialist. The governors must be satisfied that there is a specified medical reason which makes attendance at this school essential.
- Nursery admissions are separate and parents are asked to note that attendance at the school's nursery does not guarantee a place in the reception class.
- Parents who are refused a place have a statutory right of appeal. Further details of the appeals process are available by writing to the Chair of Governors at the school address.
- If a place is offered on the basis of false information (e.g. address or Church attendance) or if parents do not respond within the stated timescale to the offer of a place the governing body reserves the right to withdraw their offer.

Please note: Detailed information about nursery schools and nursery classes in first and primary schools, including numbers of places, are included in the information for Parents Handbook obtainable from the Local Authority.

It must be stressed that formal written applications for admission must be made on the form provided by the Local Authority and returned to the Local Authority by the stated date. Places will then be allocated by strict application of the above criteria, with no reference to the date of application. Parents will be notified as to whether or not their child has been allocated a place by the Local Authority as specified by them.

Admission Policy – St Pauls Primary School

1. Introduction

1.1 Recognizing its historic foundation, St Paul's Church of England Primary School, Newcastle upon Tyne, shall preserve and develop its Christian character in accordance with the Trust Deed and, therefore, shall seek to glorify the One God [who exists as Father, Son and Holy Spirit] and to serve its community by providing, within the context of biblical belief and practice, an excellent education which will enable all pupils to achieve beyond their expectations.

1.2 The Governing Body recognizes that all people owe their existence to God and are dependent upon him for their preservation day by day.

1.3 The Governing Body acknowledges that mankind, male and female, was created in and as the image of God and thus all people are to be shown care, love, and respect at all times, from conception to the grave.

1.4 St Paul's Voluntary Aided Church of England Primary School provides an education for pupils of statutory school age (that is 5 to 11 years of age) and, in a Nursery class, for pupils a year younger than the statutory school age.

1.5 The Governing Body of St Paul's School is the Admissions Authority for the school.

1.6 The admissions number for St. Paul's School is 35. There are, therefore, 35 places available each year for children of Reception class age. A school year begins in September. This arrangement follows consultation with the Local Authority and other admission authorities in the city and diocese.

1.7 Priority for admission shall be given to a child(ren) with a Statement of Special Educational Needs which names the school.

1.8 The parents or carers of a child who is 4 years of age may apply for a place in a Reception class (the first year of statutory schooling) if their child will be 5 during the same school year.

1.9 The classes in St Paul's School are restricted, except in exceptional circumstances, to 30 pupils.

1.10 The parents or carers of children over the age of 5 may apply for a place in a class appropriate for their age.

1.11 There are 26 part time (15 hours) places in the Nursery class.

1.12 The process for admission to the Nursery class is separate from that of admission to other classes. Parents or carers with a pupil in the Nursery class have no automatic right to, nor a guarantee of, a place in a Reception class. Parents or carers must, therefore, apply separately for a place in the Nursery and/or a place in the Reception or any other class.

1.13 The parents or carers of a child who is 3 years of age may apply for a place in the Nursery class if their child will be 4 during the same school year.

2. Applying for Admission

2.1 All applications must be made in writing on an application form that can be obtained from the school (telephone 0191 273 3667).

2.2 Parents and carers who apply for a Reception or a Nursery place will be contacted with either an offer of a place or an explanation of why a place has not been offered after the 31 March which precedes the start of the school year (in September) for which a place has been requested.

2.3 Parents and carers who apply for other year groups will be contacted usually within a week of making an application.

2.4 The school shall maintain a waiting list of applicants. This list shall be ranked in the same order of priority as the over subscription criteria outlined in paragraph 2.5 below.

2.5 When there are more applicants than places available for a child in a year group or class, preference will be given, in the following order of priority, to those children:

[1] who are in public care and whose carers choose St Paul's School for the distinctive Christian education it provides;

[2] who are in public care;

[3] who have a brother[s] or sister[s] (be he or she a full, half, or step brother or sister, or a child of the partner of their parent or carer) who

will be being educated in St Paul's School at the time of admission;

[4] whose parents or carers are on the Electoral Roll of Elswick Parish Church (St Stephen and St Paul), as confirmed by the Minister of that church in writing, and choose St Paul's School for the distinctive Christian education it provides;

[5] whose parents are members of another Christian church, as confirmed by the Minister of that church in writing, and choose St Paul's School for the distinctive Christian education it provides; and,

[6] who live nearest to the school measured, in a straight line from the front door of the home of

the person with parental responsibility for the child[ren] to the main entrance of the school, using the Local Land and Property Gazetteer or a suitable alternative geographical information system).

2.6 Parents or carers who are not offered a place for their child have the right of appeal to an independent appeals committee. They should, in the first instance, contact the Chairman of the Governors at the school

(telephone 0191 273 3667) to give notice of their intention to appeal.

3. Review

The governors shall review this policy each year.

How do you process my application?

Each school you list on your form is considered as a separate application. This is a legal requirement and is called equal preference.

- Our computer system is set up to apply the rules for community schools. Faith schools apply their own admission rules to decide who will get a place.
- We co-ordinate the information for each school you have listed on your form to ensure that each child is only offered one place.
- If just one school you have applied for can offer you a place, then that is where we will offer your child a place.
- If your child is eligible for more than one school place we will offer you a place at the school you listed highest
- We repeat these steps until every child has been offered a place.

Is a first come, first served system used to allocate places?

No. All applications received by the closing date of midnight on 15 January 2011 will be considered in the first round of allocations.

How are places allocated?

If there are enough places then they will be offered to all applicants. If the school is over-subscribed all places are allocated in line with the admission rules.

Places will be offered up to the admission number. The admission number for each school is shown in the school directory. Once these places have been filled using the admission criteria further admissions may be refused on the grounds of infant class size prejudice and that to admit another child would prejudice the provision of efficient education or the efficient use of resources because the class would be too big. The school must comply with infant class size limits.

What are infant class size limits?

The law states that no infant class should contain more than 30 children with a single teacher. Infant classes are Reception, Year 1 and Year 2. Children may therefore be refused places because their admission would mean more than 30 children in a class.

The class size limit does not mean that all schools have to admit up to 30 children into each class. At some schools the size of classrooms and internal layout may mean that classes have to be smaller than 30.

What happens if you cannot offer any school that I list?

If we cannot offer your child a place at any school that you list, you will be offered a place at the nearest school with an available place.

How and when will I hear?

If you apply online, we will email on 1 April 2011 to tell you the school that we have offered your child.

All parents and carers will be sent a letter telling you the name of the school we have offered your child. This will be posted by second class post on 1 April 2011.

Emails will be sent to the email address you gave on your online application form. You may re-enter the system until the closing date and change this if necessary. Letters will be sent to the address you gave on your application unless you have advised us that your contact details have changed.

What happens after 1 April 2011?

You must reply by 12 April 2011 to accept the place offered.

Please let us know if you do not require the place so we can offer it to another child.

What can I do if my child is not offered a place at my preferred school?

If you are not offered your first preference, we will offer you a place at another school. If possible, this will be your second, third or fourth preference or will be the nearest school with a place available. You can:

- Accept the alternative place.
- Ask about availability of places at other schools.
- Have your child's name kept on a waiting list for places at your preferred school.
- Appeal to an independent appeal panel against the decision to refuse a place.

You are advised to accept the place offered even if it is not at the school you wanted and you want to lodge an appeal. This will ensure that your child has a school place and does not affect the appeal process. If you do not respond by 12 April we will assume the offer is no longer required and may reallocate the place.

Are any places allocated after the initial round of offers?

Yes. Some parents offered places decide they no longer wish their child to attend the particular school. Waiting lists for all schools will be set up the week following the letters being sent to parents.

We will maintain the waiting lists for all community schools until the end of the autumn term 2011. Your child will be automatically placed on the waiting list for any primary school that is ranked higher on your application than the one they have been offered. You may also request that your child is placed on a waiting list for a school that was not an original preference.

We will use the admission rules to decide where your child is on the waiting list for a particular school. As places become available, the child highest on the waiting list will be offered the place. This is not dependent on submitting an appeal. Waiting lists will change as late applications are received. Your child can go up or down the list. Late applicants will be slotted into the list according to where they meet the admission rules.

Faith schools maintain their own waiting lists in accordance with the school's admissions policy.

Can the offer of a place be withdrawn?

We reserve the right to withdraw an offer of a place in certain limited circumstances.

You should be aware that by submitting your application you are stating that the information given is true and accurate.

Examples of when a place could be withdrawn include:

- Where you have given fraudulent or intentionally misleading information such as a false address.
- Where you have not responded to an offer within a reasonable time.

- Where the offer has been made in error by the local authority for a faith school
- Where the authority is able to meet a higher preference.

If an offer is withdrawn as a result of misleading information, your application will be reprocessed. You have a right of appeal if a place is refused.

Appeals

If you are not offered a place for your child at the school you want then you have the right to appeal against the decision to an Independent Appeal Panel. If you want to appeal for more

than one school you will need to appeal separately for each one.

We will be able to advise you about waiting lists and the appeals process. In reception, year 1 and year 2, infant class size legislation is a reason to refuse admission. Parents are advised to consider their case carefully and seek advice from us if necessary.

An appeal panel has very limited grounds to allow an appeal for reception, year 1 and year 2 because of the statutory class size limitation of 30 children per class.

You will not be able to appeal until you have been formally refused admission.

Applying outside the normal transfer times

Changing your child's school can affect him or her in many ways and the decision should not be taken without careful thought. We know that some families will need to transfer their child to another school during the academic year, rather than at the usual transfer times. This may be because they are moving into Newcastle or moving within the city. These school moves are called 'in-year' or 'casual' admissions.

Issues to consider before changing schools

If you have not moved house, please consider the following before deciding to change your child's school:

- Each school teaches the National Curriculum in different ways and at different times of the academic year. How will your child cope with learning new rules and doing things in different ways? They may have done the work before, missed important earlier work, or find the work new or strange.
- Children need to feel happy at school and relationships with the right friends, and with teachers, are an important part of this. Will your child be able to settle in and get to know new people quickly, so that their learning does not suffer?
- Will it be a problem for you to have your children attending different schools? There is no automatic right for your other children to transfer to the new school either now or in

the future. Will you be able to transport your children to different schools at the appropriate times?

- You might need to buy a completely new uniform, including PE kit, if your child changes school.
- How would your child get to a new school? What will be the cost involved? A change will usually be regarded as parental choice. In most circumstances you are unlikely to be eligible for travel assistance to the preferred school.

Many things that worry parents, carers and children can be sorted out without the need to move schools. Often moving schools will not resolve these concerns and can even have a bad effect on your child's education.

If you are not happy about the way in which the school is working with your child you should speak to the Head teacher first. If you need further help, please contact us.

How are 'in year' admissions managed?

As required by law, Newcastle City Council will coordinate 'in year' admissions for state schools including faith schools for children of families living in Newcastle.

You cannot currently apply online for 'in year' admissions. If you wish to apply for a school place in-year please contact us for an 'in year'

application form or download the application form from our website

www.newcastle.gov.uk/admissions.

Applications will be considered according to the School Admissions Code and where appropriate the Newcastle Fair Access Protocol.

Our commitment to you

Do you want to talk to someone about the information in this booklet?

Do you need help with your application?

Both Newcastle Families Information Service (FIS) and our specialist School Choice Adviser can provide support and guidance on the application process.

Contact details are online and on the inside cover of this booklet.

How quickly will my query be dealt with?

Phone calls

Most queries can be dealt with straight away. However, at peak times such as the weeks before and after the deadline for applications to be received (15 January 2011) and around allocation day (1 April 2011) the volume of calls and correspondence is high.

We aim to deal with your telephone enquiries as quickly as possible, usually within three working days. However, to ensure that each case is thoroughly investigated, response times may be longer at these times.

Letters and emails

You will normally receive an answer within fifteen days. If this is not possible, the officer dealing with your query will let you know the reasons for the delay and when you will receive a response.

What do I do if I want to make a complaint?

Please discuss your concerns with the Policy Specialist, Admissions and Transport. Phone: 0191 277 7428.

Local authorities are required by law to operate a Fair Access Protocol to ensure that potentially vulnerable children are effectively provided for in admission arrangements and that all schools admit a fair proportion of these pupils. Children in the categories defined in the Protocol will be given priority for in-year admission to a Newcastle school.

We find that most concerns can be resolved in this way.

If you still want to make a formal complaint, you should write to:

The Complaints Officer
Children's Services Directorate
Civic Centre
Barras Bridge
Newcastle
NE1 8PU

What happens if people provide fraudulent or misleading information?

We take allegations that parents or carers have provided false information on their application form very seriously. We work closely with schools to ensure that fraudulent applications are detected. We also carry out spot checks.

- If we write to you, please provide copies of the evidence we ask for within the timeframe given.
- If you do not provide the evidence we ask for and your application is found to be fraudulent, it will be reprocessed based on the correct information.
- If an offer of a school place has already been made, it may be withdrawn and we will offer your child a place at the nearest school to your home address with an available place (if you live in Newcastle). This may be some distance away.

Use of information and data security

Data protection

In addition to processing your application for a school place, under the data protection legislation we may use your application information for the following purposes:

- To co-operate with our partners in health and youth justice to improve the well being of children in the Newcastle area as required by the Children Act 2004. Information sharing between partner organisations is sometimes necessary to help provide better services.
- To provide statistical data to other organisations for the purpose of statistical analysis, statistical surveys or research purposes only. Each request will be individually assessed by Newcastle City Council. It will not be possible for any individual to be identified from this data.
- We are required to publish statistical data about the number of applications for places at each school, the number which were successful and the criteria under which they were accepted.

Data security

All admissions application data is stored,

maintained and transferred by secure methods in accordance with the Data Protection Act.

The Newcastle online school admission system is regularly independently tested to guard against unauthorised entry.

Applicants who choose to use the paper application form will have their details entered by local authority officers into our admissions database.

We will not share personal data for admissions applications with anyone except other admitting authorities that require the data in order to process applications for schools within their own authority.



Other information to consider

Information, advice and assistance

The Families Information Service (FIS) can provide a range of information as well as impartial advice and assistance relevant to your application including:

- Ofsted inspection reports
- School performance data
- Term dates
- Provision for special educational needs
- Pre- and after school activities at the school or in the local area
- Childminders and other registered childcare, including which schools they collect from
- Local authority and school policy information, for example, uniform, charging policy

They can also help you to apply.

FIS works closely with the School Choice Adviser who can provide more in-depth advice and support for the admissions and appeals processes should you require it.

Contact Families Information Service on 0191 277 4133 or email fis@newcastle.gov.uk

Home to school transport

Getting a child to school on time and safely can sometimes be difficult. In some cases children are eligible for free school transport, usually a bus permit, which could help.

If your child is not entitled to free home to school transport it is your responsibility to ensure your child can get to school. When

choosing your preferences for a school place, please consider how your child will travel to and from school.

There are healthy and green alternatives to driving your child to school, including:

- public transport
- cycling
- walking.

If you must drive, please try and car-share with another parent and remember to drive and park safely.

Active travel including cycling and walking has been shown to help children keep fit and improve their independence and life skills. They have opportunities to meet and make friends. There will also be benefits for the local community through improved road safety, reduced traffic congestion and associated noise and air pollution.

The Council has written a Sustainable School Travel Strategy that sets out how children will be helped to travel safely, independently and sustainably. This is available on our website at www.newcastle.gov.uk. Every school has its own Travel Plan aimed at improving road safety and reducing car use.

Which children qualify for free home to school transport?

1. Distance

Your child will be eligible for a bus permit if they:

- are between 5 and 16 years old,
- attend the nearest suitable school, and
- the school is further away than the 'statutory walking distance' defined in law as:
 - two miles for pupils aged under eight
 - three miles for those aged eight and over.

The nearest suitable school is defined as the nearest qualifying school with places available and that provides education appropriate to the age, ability and aptitude of the child

The measurement of the 'statutory walking distance' is not necessarily the shortest distance by road. It is measured by an

electronic map as the shortest route along which a child, accompanied as necessary, can walk with reasonable safety.

As such, the route measured may include footpaths, bridleways and other pathways, as well as recognised roads.

2. Safety

If it is considered unsafe for your child, accompanied as necessary, to walk to their nearest suitable school which is within the statutory walking distance your child will be entitled to free travel.

3. Income

Your child will be automatically entitled to free transport if your family has low income and your child is:

- Aged 8 to 11 years, goes to their nearest suitable school, and lives more than two miles away
- Aged 11 to 16 years and goes to any one of their three nearest suitable schools, and the schools are between two and six miles away from their home address
- Aged 11 to 16 years and goes to the nearest suitable school preferred by their parents on the grounds of religion or belief, and the school is between two and 15 miles away from their home address

Children from low income families are defined as those who are entitled to free school meals, or those whose parents are in receipt of their maximum level of Working Tax Credit. Your level of entitlement to Working Tax Credit is shown on the notice issued to you by HM Revenues and Customs (TC602). Your eligibility for transport will be assessed annually.

4. Special Educational Needs

Where the child's statement of special educational needs specifies the need for free transport.

Do I have to apply for school transport for my child?

Yes. In April we will tell you which school your child has been allocated a place at. If your child

is entitled to free school transport, we will send you an application form in late May or June. It is important that you return the application form with a passport photograph as soon as possible. If you have not been contacted and think your child should get free transport, please call us for advice.

What happens if I have a complaint or disagreement concerning my child's eligibility for free home to school transport?

You will need to follow the complaints procedure outlined on page 33.

If I am not eligible for free home to school transport will my child pay full fare on public transport?

Accompanied children under the age of five travel free in Tyne and Wear.

Children aged 5 to 16 can get reduced fares with an Under-16 card on weekdays until 7pm on local bus services, Metro, Shields ferry and Northern Rail services from Sunderland to Blaydon. Without the Under-16 card, children may be expected to pay the full adult fare. The card is valid until your child finishes Year 11.

Application forms are available from any Nexus Travel Shop or online at www.how2get2.co.uk

Free school meals (FSM)

A healthy nutritious mid-day meal is available at every school in the city. Your child may be entitled to a free school meal if you are in receipt of:

- Income Support
- Income Based Jobseekers Allowance
- Income-related employment and support allowance
- Support from the National Asylum Support Service
- Child Tax Credit and not in receipt of Working Tax Credit with an annual income limit defined by HM Revenues and Customs
- The Guarantee element of State Pension Credit.

For an application form and further details contact the Families Information Service.

Pupils who are on roll and attending a nursery school or nursery class, get 1/3rd pint of whole milk free daily.

School uniform

School uniform policies are decided by the Governing Body of each school. Details should be available in the school prospectus. Newcastle City Council does not provide financial assistance towards the purchase of clothing for school.

Insurance

Newcastle City Council is insured against its legal liability for any injury, loss or damage caused to pupils as a result of negligence on its part or that of its employees.

Your child is not insured for personal accident benefits while on education premises or on work experience schemes. However, insurance cover is provided for pupils taking part in organised school trips and visits and the Headteacher will be able to provide details of this.



Nursery school admission

Children will generally be admitted to a nursery school or nursery class the September after their third birthday.

Admissions to a nursery school or class in Newcastle are not managed by the local authority. You will need to contact the school directly. They will provide you with an application form and information regarding the availability and allocation of places.

Applications should be made directly to the school by **15 April 2011**. Offers of a place will be made by the school as soon as possible after this date.

If there are fewer applications than places, everyone who applies will be offered a place. If there are more applications than places available, over-subscription criteria are applied and places offered to children who are ranked highest.

- Children with statements of special educational needs naming the nursery will be offered a place.
- Children in public care are given priority over other children.

The following criteria are then applied at the discretion of the Governing Body and are not in priority order:

- Children with a sibling in the nursery, or in the first or primary school associated with the nursery, in September 2011.
- Distance from home address to the nursery measured in a straight line
- Special reasons such as:
 - Family breakdown
 - Three or more children under 5 years in the household
 - Home accommodation is unsuitable for young children

- Children who may be at an educational disadvantage because their use of English is minimal or non-existent
- Failure to thrive socially, medically or psychologically
- Physical, sensory or learning difficulties.

If you are not offered a place, nurseries will keep a waiting list. If a place becomes available, the place will be offered to the applicant who ranks highest on the waiting list according to the published admission criteria.

There is no appeal procedure for parents refused a place in a nursery class or school.

Nursery class attendance is not taken into account when school places are allocated for reception classes.

Children will normally start primary school in the September following their fourth birthday.

Overleaf is a list of all state-run nursery classes and schools in the city.

Further information on first and primary schools can be found in the directory at the end of this booklet and on our website at **www.newcastle.gov.uk/admissions**

You can find the state nursery closest to your home by entering your postcode in the online school finder on our website.

Contact the Families Information Service (FIS) for information on all pre-school provision in Newcastle.

State nursery provision in Newcastle

Ashfield Nursery School

Elswick Road
Newcastle upon Tyne NE4 6JR
0191 273 5587
admin@ashfield.newcastle.sch.uk
www.ashfield.newcastle.sch.uk

Atkinson Road Nursery School

Atkinson Road
Newcastle upon Tyne NE4 8XT
0191 273 3368
admin@atkinsonroad-nur.newcastle.sch.uk
www.atkinsonroad-nur.newcastle.sch.uk

Cruddas Park Early Years Centre

Brunel Terrace, West City
Newcastle upon Tyne NE4 7NL
0191 273 6682
admin@cruddaspark.newcastle.sch.uk

Dunstanburgh Road Community Nursery

Bywell Street, Walker
Newcastle upon Tyne NE6 2QN
0191 265 4546
pauline.batey@newcastle.gov.uk

Monkchester Road Nursery School

Monkchester Road, Walker
Newcastle upon Tyne NE6 2LJ
0191 265 4579
admin@monkchesterroad.newcastle.sch.uk
www.monkchesterroad.newcastle.sch.uk

Montagu Community Nursery

Houghton Avenue, Cowgate
Newcastle upon Tyne NE5 3UT
0191 277 1783
wendy.pratt@newcastle.gov.uk

Newburn Manor Nursery School

Townfield Gardens, Newburn,
Newcastle upon Tyne NE15 8PY
0191 277 4180
admin@newburnmanor-nur.newcastle.sch.uk
www.newburnmanor-nur.newcastle.sch.uk

Rye Hill Community Nursery

1 Colby Court, Elswick
Newcastle upon Tyne NE4 6HL
0191 273 1618
jackie.bell@newcastle.gov.uk

Shieldfield Community Nursery

8 Clarence Walk, Shieldfield
Newcastle upon Tyne NE2 1AD
0191 232 0841
carole.welsh@newcastle.gov.uk

Walkergate Early Years Centre

Shields Road, Walkergate
Newcastle upon Tyne NE6 4XW
0191 263 2411
admin@walkergate-nur.newcastle.sch.uk
www.walkergate-nur.newcastle.sch.uk

Willow Avenue Community Nursery

Greenway, Fenham
Newcastle upon Tyne NE4 9TU
0191 274 4563
gillian.e.smith@newcastle.gov.uk

The following first and primary schools also have nursery classes:

Archbishop Runcie First School
Archibald First School
Beech Hill Primary School
Benton Park Primary School
Bridgewater
Broadwood Primary School
Byker Primary School
Canning Street Primary School
Cheviot Primary School
Chillingham Road Primary School
Christ Church C of E Primary School
Dinnington First School
English Martyrs RC Primary School
Farne Primary School
Gosforth Park First School
Grange First School
Hilton Primary School
Hotspur Primary School
Kenton Bar Primary School
Kingston Park Primary School
Lemington Riverside Primary School
Moorside Community Primary School
Mountfield Primary School
North Fawdon Primary School
Our Lady & St Anne's Roman Catholic Primary School
Ravenswood Primary School
Regent Farm First School
St Alban's RC Primary School

St Anthony's C of E Primary School
 St Catherine's RC Primary School
 St Cuthbert's Catholic Primary Kenton
 St John Vianney RC Primary School
 St. John's Primary School
 St Joseph's RC Primary School
 St Lawrence's RC Primary School
 St Michael's RC Primary School
 St Paul's C of E Primary School
 Simonside Community Primary School
 Stocksfield Avenue Primary School
 Thomas Walling Primary School
 Throckley Primary School
 Tyneview Primary School
 Walbottle Village Primary School
 Waverley Primary School
 Welbeck Primary School
 West Denton Primary School
 West Walker Primary School
 Westerhope Primary School
 Westgate Hill Primary School
 Wharrier Street Primary School
 Wingrove Primary School
 Wyndham Primary School

In addition, Hadrian special school has a nursery unit:

Hadrian school

Bertram Crescent, Pendower
 Newcastle Upon Tyne NE15 6PY
 0191 273 4440
 admin@hadrian.newcastle.sch.uk

Free nursery entitlement for 3 and 4 year olds

Your child is entitled to some free early education from the term after their third birthday.

You can take up your free entitlement to early education in a nursery unit in school or a nursery school. (See Nursery School Admissions). You can also go to a childcare provider. The Families Information Service (FIS) can provide you with a list.

In Newcastle these providers include community nurseries, day nurseries and playgroups who offer early years education to three and four year olds.

All children are entitled to 15 hours of free nursery entitlement over 38 weeks per year. You can discuss how you want to take your entitlement with your childcare provider. You may wish to take your entitlement over a maximum of two settings; however your child will only receive the equivalent of 15 hours of funded early education for a maximum of 38 weeks in total. You may prefer to take it over more weeks by not taking the full 15 hours every week. The provider you have chosen will apply for the funding on your child's behalf.

If you require childcare in addition to the free entitlement to early education there will be a cost. The FIS can provide you with a list of registered childcare providers who can look after your child. You may be eligible for support with costs of additional childcare through schemes like the childcare element of Working Tax Credit, Care to Learn or Free Childcare for Training and Learning for Work.

Explanation of terms

The terms and abbreviations used in this booklet can be unfamiliar to those not previously involved in the education system. These explanations should help but if you require further clarification please phone 0191 277 4133.

Admission authority

The body responsible for setting and applying school admission arrangements. For community or voluntary controlled schools this is Newcastle City Council. For faith schools, this is the school governing body.

Admission arrangements

The procedures, practices and oversubscription criteria used to decide the allocation of school places, including any means used to determine whether a school place is to be offered.

Admission (oversubscription) criteria

These are the rules that decide which children will be given priority where there are more applications than places.

Admission number

The number of school places offered in normal year of entry (reception).

Child's home address

This is the child's permanent address where he or she resides with a person with parental responsibility or with a parent (as defined in Section 576 of the Education Act 1996).

Common application form

The form parents complete and submit to local authorities listing their preferred choices of schools when applying for a school place.

Community schools

These schools are maintained fully by the local authority (LA). The LA is the admission authority and it is responsible for determining the admission arrangements and for allocating school places.

First schools

These schools cover the reception to year 4 age group (4 to 9 years). Many will also take younger children into designated nursery classes.

Governing bodies

These are bodies with responsibility for the performance, framework and standards under which schools are expected to operate.

Home Local Authority (LA)

A child's home local authority is the local authority in which they live.

Infant class size limit

Legislation limits the size of an infant class (i.e. Reception, year 1 and year 2 classes) to 30 pupils per teacher.

Medical need

In the oversubscription criteria this means a specific medical reason to go to a particular school. Evidence must be provided by a professional indicating why the school is the only one that can meet the needs of the child and explaining why alternative schools are unsuitable.

Oversubscription

This means that there are more applications than there are available places.

Parent/carer

This includes all those people who have parental responsibility for a child who fall under the definition of "parent" as set out in Section 576 of the Education Act 1996.

Parental responsibility

The mother of a child always has parental responsibility. The father also has parental responsibility if named on the birth certificate or by agreement with the mother, or by court order. Parents do not lose parental responsibility if they divorce. For school

admissions, this applies to the person responsible for choosing and providing for the child's education.

Preference

The school you would most like your child to attend.

Primary schools

These schools cover the reception to Year 6 age group (4 to 11 years). Many will also take younger children into designated nursery classes. The term primary is used in this information to include first schools.

School Choice Adviser

The School Choice Adviser is independent of the Local Authority and provides impartial advice and support for parents on applying for a school place. This can include assistance with completing the application form. Individual visits can be arranged.

State schools

All children in England between the ages of five and 16 are entitled to a free place at a state school. State schools all receive funding from local authorities. They follow a National Curriculum and are regularly inspected by Ofsted. There are four main types of state schools – community, foundation, voluntary aided and voluntary controlled. Academies are also state schools but have different funding arrangements.

Statement of Special Educational Needs (SEN)

A legal document issued by the local authority specifying the particular needs, resources and provision required to support the child, and can include a named school that is suitable for providing education for that child.

Under-subscription

This means that there have been fewer applications than there are available places within the admission number.

Voluntary aided schools (Faith Schools)

In Newcastle these schools are either Church of England or Catholic and responsibility for management is shared between the LA and the church but with the church playing a greater role. The governing body is the admission authority and it is responsible for determining the admission arrangements. These are different from those used by the LA.

The governors are also responsible for allocating school places but the home LA offers places at the school on behalf of the governors. Voluntary aided schools participate in the co-ordinated admission arrangements within the area of their home LA.

Voluntary controlled (VC) schools

The only VC school in Newcastle is All Saints College. Management is shared between the LA and the Church of England. As with community schools the LA is the admission authority and it is responsible for determining the admission arrangements and for allocating school places.

The contents of this booklet are correct at the time of printing.

First and primary admissions 2010 - allocation of places and appeals

Community schools

Name of School	No of places 2010	Number of Applications	Places Offered 1 March 10	Places allocated according to each rule							No of Appeals		
				Named school	Care Rule 1	Sibling Rule 2	Medical Rule 3	Distance Rule 4	Number	Heard	Upheld		
Archibald First School	60	176	60			20		40	8	8	0		
Atkinson Road Primary School	60	127	60		1	18		41					
Beech Hill Primary	54	78	54		2	22		30					
Benton Park Primary School	45	88	43			12		31					
Bridgewater Primary	30	59	30			9		21					
Broadway East First School	45	178	46			26		19	2	2	0		
Broadwood Primary School	60	93	60			11		49					
Brunton First School	30	87	30			1		29	1	1	1		
Byker Primary School	51	59	48		1	10		37					
Canning Street Primary School	60	130	60			28		32	8	8	1		
Cheviot Primary School	30	48	29			6		23					
Chillingham Road Primary School	30	96	30			10		20	3	3	0		
Cragside Primary School	60	170	60			33	2	25	5	5	0		
Dinnington First School	30	46	27			10		17					
Farne Primary	30	65	30			12		18	3	3	0		
Gosforth Park First School	45	187	45			13		31	2	2	0		
Grange First School	30	89	30			12		18					
Hawthorn Primary School	30	60	30			11		19					
Hilton Primary School	60	104	59			32		27					
Hotspur Primary School	60	91	57		1	19		37					
Kenton Bar Primary School	45	83	45			13		32					
Kingston Park Primary School	60	124	60			28		32	5	5	1		
Knoplaw Primary School	60	155	64			24		40	4	4	4		
Lemington Riverside Primary School	45	47	32			7		25					
Milecastle Primary School	54	129	52			5		47					

Apply online at www.newcastle.gov.uk/admissions by 15 January 2011 (midnight)

Name of School	No of places 2010	Number of Applications	Places Offered 1 March 10	Places allocated according to each rule						No of Appeals		
				Named school	Care Rule 1	Sibling Rule 2	Medical Distance Rule 3	Distance Rule 4	Number	Heard	Upheld	
Moorside Community Primary School	60	170	60			29		31	7	7	0	
Mountfield Primary School	30	61	30			10		20				
Newburn Manor Primary School	30	72	30			15		15	4	4	0	
North Fawdon Primary School	30	37	23			5		18				
Ravenswood Primary School	82	120	58			32		48				
Regent Farm First School	60	178	46			15		43				
St John's Primary School	30	64	30		2	8		20				
Simonside Community Primary School	45	43	31			7		24				
South Gosforth First School	45	169	45			12		33	3	3	0	
Stocksfield Avenue Primary School	60	159	60			27		33	10	10	0	
Thomas Walling Primary School	45	91	51			28	1	22				
Throckley Primary School	45	36	20			9		11				
Tyneview Primary School	30	39	23		1	7		15				
Walbottle Village Primary School	20	30	7			2		5				
Walkergate Primary School	90	130	90			31		59				
Waverley Primary School	45	71	44			24		20				
Welbeck Primary School	75	109	62			18		44				
West Denton Primary School	45	77	33			15		18				
West Jesmond Primary School	90	245	90			37		53	6	6	0	
West Walker Primary School	40	31	19			11		8				
Westerhope Primary School	60	128	59			21		38				
Westgate Hill Primary School	60	165	60			26		34	2	2	0	
Wharrier Street Primary School	60	69	38			20		18				
Wingrove Primary School	60	137	60			38		22	14	14	1	
Wyndham Primary School	30	82	30	1		17		12				

Apply online at www.newcastle.gov.uk/admissions by 15 January 2011 (midnight)

Faith schools

Name of School	No of places 2010	Number of Applications	Places Offered 1 March 10	No of Appeals		
				Number	Heard	Upheld
Archbishop Runcie First School *	30	123	30	4	4	0
Christ Church CE Primary *	20	24	15			
English Martyrs RC Primary School *	60	155	60	7	7	0
Our Lady & St Anne's RC Primary School *	30	119	30	7	7	0
Sacred Heart RC Primary School *	30	189	30	18	18	0
St Alban's RC Primary School *	30	59	30			
St Anthony's CE Primary School *	30	31	23			
St Bede's RC Primary School *	30	80	30	2	2	0
St Catherine's Catholic Primary School *	30	77	29			
St Charles' RC Primary School *	30	122	30			
St Cuthbert's Catholic Primary School (Kenton) *	30	79	30	2	2	1
St Cuthbert's RC Primary School (Walbottle) *	18	38	18			
St George's RC Primary School *	20	37	11			
St John Vianney RC Primary School *	30	85	30	4	4	0
St Joseph's RC Primary School *	30	75	30			
St Lawrence's RC Primary School *	30	58	30			
St Mark's RC Primary School *	30	60	30			
St Michael's RC Primary School *	30	84	30	4	4	0
St Oswald's Catholic Primary School *	30	118	30	2	2	0
St Paul's C of E Primary School *	35	123	35			
St Teresa's Catholic Primary School *	30	99	30	3	3	0
St Vincent's RC Primary School *	30	66	30	4	4	0

* Please note that faith schools have their own admission rules

Apply online at www.newcastle.gov.uk/admissions by 15 January 2011 (midnight)

Newcastle community first and primary schools

Archibald First School

Headteacher: Mrs Julia Bayes
 Archibald Street, Gosforth, Newcastle upon Tyne, NE3 1EB
 0191 285 1957
 admin@archibald.newcastle.sch.uk
 www.archibald.newcastle.sch.uk
 Type: **Community mixed first**
 Age range: **3-9**
 Published admission number: **60**
 Nursery at School: **Yes**
 Expected number on roll excl nursery: 297
 Pupils normally transfer to: Gosforth Junior High School
 School number: **2001**

Benton Park Primary School

Headteacher: Ms Alice Witherow
 Corchester Walk, Newcastle upon Tyne, NE7 7SS
 0191 266 5122
 admin@bentonpark.newcastle.sch.uk
 www.bentonparkprimary.org
 Type: **Community mixed primary**
 Age range: **3-11**
 Published admission number: **45**
 Nursery at School: **Yes**
 Expected number on roll excl nursery: 250
 Pupils normally transfer to: Heaton Manor School
 School number: **2050**

Atkinson Road Primary School

Headteacher: Andrea O'Neill
 Atkinson Road, Newcastle upon Tyne, NE4 8XT
 0191 273 0452
 admin@atkinsonrd.newcastle.sch.uk
 www.atkinsonrd.newcastle.sch.uk/
 Type: **Community mixed primary**
 Age range: **4-11**
 Published admission number: **60**
 Nursery at School: **No**
 Expected number on roll: 368
 Pupils normally transfer to: Excelsior
 School number: **2010**

Bridgewater

Headteacher: Mrs Samantha Robson
 Delaval Road, Newcastle upon Tyne, NE15 6NL
 0191 274 5290
 admin@bridgewater.newcastle.sch.uk
 Type: **Community mixed primary**
 Age range: **0-11**
 Published admission number: **30**
 Nursery at School: **Yes**
 Expected number on roll excl nursery: 161
 Pupils normally transfer to: Excelsior Academy
 School number: **2210**

Beech Hill Primary School

Headteacher: Nicola Nelson Taylor
 Linhope Road, West Denton, Newcastle upon Tyne, NE5 2LW
 0191 267 8113
 admin@beechhill.newcastle.sch.uk
 www.beechhill.newcastle.sch.uk/
 Type: **Community mixed primary**
 Age range: **3-11**
 Published admission number: **45**
 Nursery at School: **Yes**
 Expected number on roll excl nursery: 292
 Pupils normally transfer to: All Saints College
 School number: **2004**

Broadway East First School

Headteacher: Ms Helen McKenna
 Broadway East, Gosforth, Newcastle upon Tyne, NE3 5JQ
 0191 285 5141
 admin@broadway.newcastle.sch.uk
 www.broadway.newcastle.sch.uk
 Type: **Community mixed first**
 Age range: **4-9**
 Published admission number: **45**
 Nursery at School: **No**
 Expected number on roll: 225
 Pupils normally transfer to: Gosforth East Middle School
 School number: **2006**

Broadwood Primary School

Headteacher: Mr Marcus Tinsley
 Broadwood Road, Denton Burn,
 Newcastle upon Tyne, NE15 7TB
 0191 274 1684
 admin@broadwood.newcastle.sch.uk
 Type: **Community mixed primary**
 Age range: **3-11**
 Published admission number: **60**
 Nursery at School: **Yes**
 Expected number on roll excl nursery: 248
 Pupils normally transfer to: Excelsior Academy
 School number: **2225**

Canning Street Primary School

Headteacher: Heather Campbell
 Wellfield Road, Newcastle upon Tyne,
 NE4 8PA
 0191 273 5465
 admin@canning.newcastle.sch.uk
 Type: Community mixed primary
 Age range: **3-11**
 Published admission number: **60**
 Nursery at School: **Yes**
 Expected number on roll excl nursery: 407
 Pupils normally transfer to: Excelsior Academy
 School number: **2090**

Brunton First School

Headteacher: Mrs Gill McKay
 Roseden Way, Newcastle Great Park
 Newcastle upon Tyne NE13 9BD
 0191 217 0045
 admin@bruntonfirst.newcastle.sch.uk
 www.bruntonfirst.newcastle.sch.uk
 Type: **Community mixed first**
 Age range: **4-9**
 Published admission number: **30**
 Nursery at School: **No**
 Expected number on roll: 82
 Pupils normally transfer to: Gosforth Junior
 High
 School number: **3875**

Cheviot Primary School

Headteacher: Mrs Eileen Youngs
 Yetholm Place, Newbiggin Hall,
 Newcastle upon Tyne, NE5 4EB
 0191 286 9324
 admin@cheviot.newcastle.sch.uk
 www.cheviot.newcastle.sch.uk
 Type: **Community mixed primary**
 Age range: **3-11**
 Published admission number: **30**
 Nursery at School: **Yes**
 Expected number on roll excl nursery: 204
 Pupils normally transfer to: All Saints College
 School number: **2018**

Byker Primary School

Headteacher: Mrs Linda Bradley
 Commercial Road, Byker,
 Newcastle upon Tyne, NE6 2AT
 0191 265 6906
 admin@byker.newcastle.sch.uk
 www.byker.newcastle.sch.uk
 Type: **Community mixed primary**
 Age range: **3-11**
 Published admission number: **51**
 Nursery at School: **Yes**
 Expected number on roll excl nursery: 222
 Pupils normally transfer to: Benfield School
 School number: **2032**

Chillingham Road Primary School

Headteacher: Mrs Karen Elliott
 Ninth Avenue, Heaton, Newcastle upon Tyne,
 NE6 5XX
 0191 265 5940
 admin@chillingham.newcastle.sch.uk
 www.chillingham.newcastle.sch.uk
 Type: **Community mixed primary**
 Age range: **3-11**
 Published admission number: **30**
 Nursery at School: **Yes**
 Expected number on roll excl nursery: 186
 Pupils normally transfer to: Heaton Manor
 School number: **2100**

Cragside Primary School

Headteacher: Mr Michael Howard
 Cragside, Newcastle upon Tyne, NE7 7EL
 0191 266 8389
 admin@cragside.newcastle.sch.uk
 www.cragsideprimary.org
 Type: **Community mixed primary**
 Age range: **4-11**
 Published admission number: **60**
 Nursery at School: **No**
 Expected number on roll: 409
 Pupils normally transfer to: Heaton Manor
 School
 School number: **2170**

Dinnington First School

Headteacher: Mrs Allyson Farrar
 Sycamore Avenue, Dinnington, Newcastle upon
 Tyne, NE13 7JY
 01661 822457
 admin@dinnington.newcastle.sch.uk
 www.dinnington.newcastle.sch.uk
 Type: **Community mixed first**
 Age range: **3-9**
 Published admission number: **30**
 Nursery at School: **Yes**
 Expected number on roll excl nursery: 144
 Pupils normally transfer to: Gosforth East
 Middle School
 School number: **2000**

Farne Primary School

Headteacher: Ms Liz Simpson
 Marsden Lane, Newcastle upon Tyne, NE5 4AP
 0191 286 0268
 admin@farne.newcastle.sch.uk
 www.farne.newcastle.sch.uk
 Type: **Community mixed first**
 Age range: **3-11**
 Published admission number: **30**
 Nursery at School: **Yes**
 Expected number on roll excl nursery: 204
 Pupils normally transfer to: All Saints College
 School number: **2027**

Gosforth Park First School

Headteacher: Mrs Jini Sara
 Broadway East, Gosforth, Newcastle upon
 Tyne, NE3 5JQ
 0191 285 2559
 admin@gosforthpark.newcastle.sch.uk
 www.gp.firstschool.org.uk
 Type: **Community mixed first**
 Age range: **3-9**
 Published admission number: **45**
 Nursery at School: **Yes**
 Expected number on roll excl nursery: 225
 Pupils normally transfer to: Gosforth East
 Middle School
 School number: **2005**

Grange First School

Headteacher: Mr Stephen Easton
 Norham Road, Gosforth, Newcastle upon
 Tyne, NE3 2NP
 0191 285 2954
 admin@grange.newcastle.sch.uk
 www.grange.newcastle.sch.uk
 Type: **Community mixed first**
 Age range: **3-9**
 Published admission number: **30**
 Nursery at School: **Yes**
 Expected number on roll excl nursery: 148
 Pupils normally transfer to: Gosforth Central
 Middle School
 School number: **2009**

Hawthorn Primary School

Headteacher: Mrs Judy Cowgill
 Park Close, Westgate, Newcastle upon Tyne,
 NE4 6SB
 0191 273 4237
 admin@hawthorn.newcastle.sch.uk
 Type: **Community mixed primary**
 Age range: **4-11**
 Published admission number: **30**
 Nursery at School: **No**
 Expected number on roll: 187
 Pupils normally transfer to: Excelsior Academy
 School number: **2080**

Hilton Primary School

Headteacher: Mrs Shirley Davison
 Hilton Avenue, Blakelaw, Newcastle Upon Tyne, NE5 3RN
 0191 286 9297
 admin@hilton.newcastle.sch.uk
 www.hilton.newcastle.sch.uk
 Type: **Community mixed primary**
 Age range: **3-11**
 Published admission number: **60**
 Nursery at School: **Yes**
 Expected number on roll excl nursery: 352
 Pupils normally transfer to: Kenton Technology College
 School number: **2350**

Kingston Park Primary School

Headteacher: Jayne Delvey
 Cranleigh Avenue, Kingston Park, Newcastle upon Tyne, NE3 2EL
 0191 214 0363
 admin@kingstonpk.newcastle.sch.uk
 www.kingstonpk.newcastle.sch.uk
 Type: **Community mixed primary**
 Age range: **3-11**
 Published admission number: **60**
 Nursery at School: **Yes**
 Expected number on roll excl nursery: 412
 Pupils normally transfer to: Kenton Technology College
 School number: **2996**

Hotspur Primary School

Headteacher: Mr Miles Wallis-Clarke
 Mowbray Street, Newcastle Upon Tyne, NE6 5PA
 0191 276 2762
 admin@hotspur.newcastle.sch.uk
 www.hotspurprimary.com
 Type: **Community mixed primary**
 Age range: **3-11**
 Published admission number: **60**
 Nursery at School: **Yes**
 Expected number on roll excl nursery: 338
 Pupils normally transfer to: Heaton Manor School
 School number: **2998**

Knoplaw Primary School

Headteacher: Mrs Pauline Dutton
 Hillhead Parkway, Newcastle upon Tyne, NE5 1DS
 0191 267 4453
 admin@knoplaw.newcastle.sch.uk
 www.knoplaw.newcastle.sch.uk
 Type: **Community mixed primary**
 Age range: **4-11**
 Published admission number: **60**
 Nursery at School: **No**
 Expected number on roll: 420
 Pupils normally transfer to: Walbottle Campus
 School number: **2016**

Kenton Bar Primary School

Headteacher: Mr Tony Leonard
 Ryal Walk, Kenton Bar, Newcastle Upon Tyne, NE3 3YF
 0191 286 0536
 admin@kentonbar.newcastle.sch.uk
 www.kentonbar.newcastle.sch.uk
 Type: **Community mixed primary**
 Age range: **3-11**
 Published admission number: **45**
 Nursery at School: **Yes**
 Expected number on roll excl nursery: 223
 Pupils normally transfer to: Kenton Technology College
 School number: **2995**

Lemington Riverside Primary School

Headteacher: Mrs Susan Hall
 Rokeby Street, Lemington, Newcastle upon Tyne, NE15 8RR
 0191 267 4315
 admin@lemingtonriverside.newcastle.sch.uk
 www.lemingtonriverside.newcastle.sch.uk
 Type: **Community mixed primary**
 Age range: **3-11**
 Published admission number: **45**
 Nursery at School: **Yes**
 Expected number on roll excl nursery: 152
 Pupils normally transfer to: All Saints College/Walbottle Campus
 School number: **2030**

Milecastle Primary School

Headteacher: Mrs Lynn Rae
 Hillhead Parkway, Newcastle upon Tyne,
 NE5 1LH
 0191 2674510
 admin@milecastle.newcastle.sch.uk
 www.milecastle.newcastle.sch.uk/index1.htm
 Type: **Community mixed primary**
 Age range: **4-11**
 Published admission number: **30**
 Nursery at School: **No**
 Expected number on roll: 264
 Pupils normally transfer to: Walbottle Campus
 School number: **2017**

Newburn Manor Primary School

Headteacher: Mrs Jane McFadyen
 41 Townfield Gardens, Newburn,
 Newcastle upon Tyne, NE15 8PY
 0191 267 4533
 admin@newburnmanorprimary.newcastle.sch.uk
 www.newburnmanorprimary.newcastle.sch.uk
 Type: **Community mixed primary**
 Age range: **4-11**
 Published admission number: **30**
 Nursery at School: **No**
 Expected number on roll: 194
 Pupils normally transfer to: Walbottle Campus
 School number: **2013**

Moorside Community Primary

Executive Headteacher: Ms June Foster
 Head of School: Mrs C de Oliveira
 Beaconsfield Street, Newcastle upon Tyne,
 NE4 5AW
 0191 272 0239
 admin@moorside.newcastle.sch.uk
 www.moorside.newcastle.sch.uk
 Type: **Community mixed primary**
 Age range: **3-11**
 Published admission number: **60**
 Nursery at School: **Yes**
 Expected number on roll excl nursery: 398
 Pupils normally transfer to: Excelsior Academy
 School number: **2999**

North Fawdon Primary School

Headteacher: Mrs Lorraine Alexander
 Brotherlee Road, Fawdon, Newcastle upon
 Tyne, NE3 2SL
 0191 285 1350
 admin@northfawdon.newcastle.sch.uk
 www.northfawdon.newcastle.sch.uk
 Type: **Community mixed primary**
 Age range: **3-11**
 Published admission number: **30**
 Nursery at School: **Yes**
 Expected number on roll excl nursery: 120
 Pupils normally transfer to: Kenton Technology
 College
 School number: **2300**

Mountfield Primary School

Headteacher: Mr David Atkinson
 Kirkwood Drive, North Kenton, Newcastle upon
 Tyne, NE3 3AT
 0191 285 3793
 admin@mountfield.newcastle.sch.uk
 www.mountfield.newcastle.sch.uk
 Type: **Community mixed primary**
 Age range: **3-11**
 Published admission number: **30**
 Nursery at School: **Yes**
 Expected number on roll excl nursery: 177
 Pupils normally transfer to: Kenton Technology
 College
 School number: **2462**

Ravenswood Primary School

Headteacher: Mrs Pauline Summerhill
 Ravenswood Road, Heaton, Newcastle upon
 Tyne, NE6 5TU
 0191 265 9599
 admin@ravenswood.newcastle.sch.uk
 www.ravenswood.newcastle.sch.uk
 Type: **Community mixed primary**
 Age range: **3-11**
 Published admission number: **82**
 Nursery at School: **Yes**
 Expected number on roll excl nursery: 500
 Pupils normally transfer to: Heaton Manor
 School
 School number: **2670**

Regent Farm First School

Headteacher: Ms Deborah Ashcroft
 Wansbeck Road South, Gosforth,
 Newcastle upon Tyne, NE3 3PE
 0191 285 2294
 admin@regentfarm.newcastle.sch.uk
 www.regentfarm.newcastle.sch.uk
 Type: **Community mixed first**
 Age range: **3-9**
 Published admission number: **60**
 Nursery at School: **Yes**
 Expected number on roll excl nursery: 235
 Pupils normally transfer to: Gosforth Junior
 High School
 School number: **2003**

South Gosforth First School

Headteacher: Mr Peter Coles
 Alnmouth Drive, South Gosforth, Newcastle
 upon Tyne, NE3 1YF
 0191 285 3453
 admin@southgosforth.newcastle.sch.uk
 www.southgosforth.firstschool.org.uk
 Type: **Community mixed first**
 Age range: **4-9**
 Published admission number: **45**
 Nursery at School: **No**
 Expected number on roll: 225
 Pupils normally transfer to: Gosforth Central
 Middle School
 School number: **2002**

St John's Primary School

Headteacher: Tracey Caffrey
 Teindland Close, Benwell, Newcastle upon
 Tyne, NE4 8HE
 0191 273 5293
 admin@stjohns.newcastle.sch.uk
 www.stjohns.newcastle.sch.uk
 Type: **Community mixed primary**
 Age range: **3-11**
 Published admission number: **30**
 Nursery at School: **Yes**
 Expected number on roll excl nursery: 179
 Pupils normally transfer to: Excelsior Academy
 School number: **2720**

Stocksfield Avenue Primary School

Headteacher: Sarah Knowles
 St Cuthberts Road, Newcastle Upon Tyne,
 NE5 2DQ
 0191 274 8434
 admin@stocksfield.newcastle.sch.uk
 www.stocksfield.newcastle.sch.uk/
 Type: **Community mixed primary**
 Age range: **3-11**
 Published admission number: **60**
 Nursery at School: **Yes**
 Expected number on roll excl nursery: 420
 Pupils normally transfer to: Kenton Technology
 College
 School number: **2735**

Simonside Community Primary

Headteacher: Miss Jane Sutton
 Bedeburn Road, Newcastle upon Tyne,
 NE5 4LG
 0191 286 0776
 admin@simonside.newcastle.sch.uk
 Type: **Community mixed primary**
 Age range: **3-11**
 Published admission number: **45**
 Nursery at School: **Yes**
 Expected number on roll excl nursery: 174
 Pupils normally transfer to: All Saints College
 School number: **2021**

Thomas Walling Primary School

Headteacher: Mrs Julie Scott
 Lindfield Avenue, Blakelaw, Newcastle upon
 Tyne, NE5 3PL
 0191 286 0333
 admin@walling.newcastle.sch.uk
 Type: **Community mixed primary**
 Age range: **3-11**
 Published admission number: **45**
 Nursery at School: **Yes**
 Expected number on roll excl nursery: 316
 Pupils normally transfer to: Kenton Technology
 College
 School number: **2890**

Throckley Primary School

Headteacher: Mr Colin Lofthouse
 Hexham Road, Throckley Newcastle upon Tyne, NE15 9DY
 0191 267 5311
 admin@throckleyprim.newcastle.sch.uk
 www.throckleyprim.newcastle.sch.uk
 Type: **Community mixed primary**
 Age range: **3-11**
 Published admission number: **45**
 Nursery at School: **Yes**
 Expected number on roll excl nursery: 176
 Pupils normally transfer to: Walbottle Campus
 School number: **2012**

Walkergate Primary School

Headteacher: Mr Don Smith
 Sutton Street, Walkergate,
 Newcastle upon Tyne, NE6 4SD
 0191 265 5737
 admin@walkergateprim.newcastle.sch.uk
 www.walkergateprim.newcastle.sch.uk
 Type: **Community mixed primary**
 Age range: **4-11**
 Published admission number: **90**
 Nursery at School: **No**
 Expected number on roll: 461
 Pupils normally transfer to: Benfield School
 School number: **2880**

Tyneview Primary School

Headteacher: Mr Stephen Gittins
 Winslow Place, Off Titan Road,
 Newcastle upon Tyne, NE6 3QP
 0191 262 6227
 admin@tyneview.newcastle.sch.uk
 www.tyneview.newcastle.sch.uk
 Type: **Community mixed primary**
 Age range: **3-11**
 Published admission number: **30**
 Nursery at School: **Yes**
 Expected number on roll excl nursery: 162
 Pupils normally transfer to: Walker Technology
 College
 School number: **2250**

Waverley Primary School

Headteacher: Mr Mark Outerside
 Maple Close, Lemington, Newcastle upon Tyne, NE15 7QZ
 0191 267 4549
 admin@waverley.newcastle.sch.uk
 www.waverley.newcastle.sch.uk
 Type: **Community mixed primary**
 Age range: **3-11**
 Published admission number: **45**
 Nursery at School: **Yes**
 Expected number on roll excl nursery: 280
 Pupils normally transfer to: All Saints College
 or Walbottle Campus
 School number: **2020**

Walbottle Village Primary School

Executive Headteacher: Ms Nicola Nelson-Taylor
 Headteacher: Mrs Maria Tarn
 The Green, Walbottle, Newcastle upon Tyne, NE15 8JL
 0191 267 5320
 admin@walbottle.prim.newcastle.sch.uk
 www.walbottlevillage.newcastle.sch.uk
 Type: **Community mixed primary**
 Age range: **3-11**
 Published admission number: **20**
 Nursery at School: **Yes**
 Expected number on roll excl nursery: 101
 Pupils normally transfer to: Walbottle Campus
 School number: **2014**

Welbeck Primary School

Headteacher: Ms Linda Taylor
 Flodden Street, Walker, Newcastle upon Tyne, NE6 2QL
 0191 265 5362
 admin@welbeck.newcastle.sch.uk
 www.welbeck.newcastle.sch.uk
 Type: **Community mixed primary**
 Age range: **3-11**
 Published admission number: **60**
 Nursery at School: **Yes**
 Expected number on roll excl nursery: 417
 Pupils normally transfer to: Walker Technology
 College
 School number: **2900**

West Denton Primary School

Headteacher: Mr Mick Mingstones
 Hillhead Road, West Denton,
 Newcastle upon Tyne, NE5 1DN
 0191 267 4211
 admin@westdenton.newcastle.sch.uk
 www.westdenton.newcastle.sch.uk
 Type: **Community mixed primary**
 Age range: **3-11**
 Published admission number: **45**
 Nursery at School: **Yes**
 Expected number on roll excl nursery: 256
 Pupils normally transfer to: All Saints College
 or Walbottle Campus
 School number: **2015**

West Jesmond Primary School

Acting Headteacher: Mrs Jo Elliott
 Tankerville Terrace, Newcastle upon Tyne
 NE2 3AJ
 0191 281 0000
 office@westjesmond.newcastle.sch.uk
 www.westjesmondprimary.org.uk
 Type: **Community mixed primary**
 Age range: **4-11**
 Published admission number: **90**
 Nursery at School: **No**
 Expected number on roll: 604
 Pupils normally transfer to: Heaton Manor
 School
 School number: **2033**

West Walker Primary School

Headteacher: Ms Nichola Draper
 Church Street, Walker, Newcastle upon Tyne,
 NE6 3XW
 0191 262 4130
 admin@westwalker.newcastle.sch.uk
 www.westwalker.newcastle.sch.uk
 Type: **Community mixed primary**
 Age range: **3-11**
 Published admission number: **40**
 Nursery at School: **Yes**
 Expected number on roll excl nursery: 189
 Pupils normally transfer to: Walker Technology
 College
 School number: **2940**

Westerhope Primary School

Headteacher: Mrs Jo Warner
 Hill Head Road, Westerhope, Newcastle upon
 Tyne, NE5 1NE
 0191 267 4750
 admin@westerhope.newcastle.sch.uk
 Type: **Community mixed primary**
 Age range: **3-11**
 Published admission number: **60**
 Nursery at School: **Yes**
 Expected number on roll excl nursery: 378
 Pupils normally transfer to: Walbottle Campus
 School number: **2031**

Westgate Hill Primary School

Executive Headteacher: Ms June Foster
 Head of School: Mrs E Binks
 Westgate Road, Newcastle upon Tyne,
 NE4 6NY
 0191 273 5742
 admin@westgatehill.newcastle.sch.uk
 www.westgatehill.newcastle.sch.uk
 Type: **Community mixed primary**
 Age range: **3-11**
 Published admission number: **60**
 Nursery at School: **Yes**
 Expected number on roll excl nursery: 375
 Pupils normally transfer to: Excelsior Academy
 School number: **2910**

Wharrier Street Primary School

Headteacher: Mrs Bernadette Doherty
 Wharrier Street, Walker, Newcastle upon Tyne,
 NE6 3EY
 0191 265 5743
 admin@wharrier.newcastle.sch.uk
 www.wharrier.newcastle.sch.uk
 Type: **Community mixed primary**
 Age range: **3-11**
 Published admission number: **60**
 Nursery at School: **Yes**
 Expected number on roll excl nursery: 255
 Pupils normally transfer to: Walker Technology
 College
 School number: **2950**

Wingrove Primary School

Headteacher: Mrs Denise Harland
Hadrian Road, Fenham, Newcastle upon Tyne,
NE4 9HN

0191 273 5466

admin@wingrove.newcastle.sch.uk

www.wingrove.newcastle.sch.uk

Type: **Community mixed primary**

Age range: **3-11**

Published admission number: **60**

Nursery at School: **Yes**

Expected number on roll excl nursery: 409

Pupils normally transfer to: Excelsior Academy

School number: **2960**

Wyndham Primary School

Headteacher: Mrs Barbara Redhead
Wyndsail Place, Newcastle upon Tyne,
NE3 4QP

0191 285 3895

admin@wyndham.newcastle.sch.uk

www.wyndham.primary--school.org.uk

Type: **Community mixed primary**

Age range: **3-11**

Published admission number: **30**

Nursery at School: **Yes**

Expected number on roll excl nursery: 211

Pupils normally transfer to: Kenton Technology
College

School number: **2990**

Newcastle Faith Schools

Admissions to faith schools (also known as Voluntary Aided Schools) are the responsibility of the school governors.

Please read each individual faith school prospectus and admission policy carefully to consider how well your child meets the rules for this school.

If applicants are applying for faith reasons, the school will ask you to submit evidence of faith. This can be a baptism certificate, letter of support from a minister of faith or other religious leader or a suitable equivalent.

Archbishop Runcie First School

Headteacher: Mrs Julie Robson
Christon Close, Gosforth, Newcastle upon
Tyne, NE3 1US

0191 285 2663

admin@archbishop.newcastle.sch.uk

www.archbishop.newcastle.sch.uk

Type: **Voluntary aided (Church of England) mixed first**

Age range: **3-9**

Published admission number: **30**

Nursery at School: **Yes**

Expected number on roll excl nursery: 150

Pupils normally transfer to: Gosforth Central
Middle School

School number: 3471

Christ Church C of E Primary School

Headteacher: Mrs Sandra Furno
Shieldfield Green, Shieldfield,
Newcastle upon Tyne, NE2 1XA

0191 232 8054

admin@christchurch.newcastle.sch.uk

www.christchurch.newcastle.sch.uk

Type: **Voluntary aided (Church of England) mixed primary**

Age range: **3-11**

Published admission number: **20**

Nursery at School: **Yes**

Expected number on roll excl nursery: 83

Pupils normally transfer to: Heaton Manor
School

School number: **3321**

English Martyrs RC Primary School

Headteacher: Mrs Denise Kendall
 Beaufront Gardens, Wingrove
 Newcastle upon Tyne, NE5 2SA
 0191 274 7463
 admin@englishmartyrs.newcastle.sch.uk
 www.englishmartyrs.newcastle.sch.uk
 Type: **Voluntary aided (Roman Catholic)**
mixed primary
 Age range: **3-11**
 Published admission number: **60**
 Nursery at School: **Yes**
 Expected number on roll excl nursery: 418
 Pupils normally transfer to: Sacred Heart (girls)
 or St Cuthbert's High (boys)
 School number: **3650**

St Alban's RC Primary School

Headteacher: Mr Michael Donnelly
 Westbourne Avenue, Newcastle Upon Tyne,
 NE6 4HQ
 0191 262 5552
 admin@stalbans.newcastle.sch.uk
 www.stalbans.newcastle.sch.uk
 Type: **Voluntary Aided (Roman Catholic)**
mixed primary
 Age range: **3-11**
 Published admission number: **30**
 Nursery at School: **Yes**
 Expected number on roll excl nursery: 203
 Pupils normally transfer to: St Mary's RC
 School
 School number: **3874**

Our Lady & St Anne's Roman Catholic Primary School

Headteacher: Michael O'Brien
 Summerhill Terrace, Newcastle upon Tyne,
 NE4 6EB
 0191 232 5496
 admin@ourlady.newcastle.sch.uk
 www.ourlady.newcastle.sch.uk
 Type: **Voluntary Aided (Roman Catholic)**
mixed primary
 Age range: **3-11**
 Published admission number: **30**
 Nursery at School: **Yes**
 Expected number on roll excl nursery: 206
 Pupils normally transfer to: Sacred Heart (girls)
 or St Cuthbert's (boys) High School
 School number: **3799**

St Anthony's C of E Primary School

Headteacher: Mrs Julie Kadleck
 Pottery Bank, Walker, Newcastle upon Tyne,
 NE6 3SU
 0191 278 2035
 admin@stanthonys.newcastle.sch.uk
 Type: **Voluntary Aided (Church of England)**
mixed primary
 Age range: **3-11**
 Published admission number: **30**
 Nursery at School: **Yes**
 Expected number on roll excl nursery: 121
 Pupils normally transfer to: Walker Technology
 College
 School number: **3470**

Sacred Heart RC Primary School

Headteacher: Mr Kevin Foster
 Convent Road, Fenham, Newcastle upon Tyne,
 NE4 9XZ
 0191 274 6695
 admin@sacredhprim.newcastle.sch.uk
 Type: **Voluntary Aided (Roman Catholic)**
mixed primary
 Age range: **4-11**
 Published admission number: **30**
 Nursery at School: **No**
 Expected number on roll: 210
 Pupils normally transfer to: Sacred Heart (girls)
 or St Cuthbert's (boys) High School
 School number: **3662**

St Bede's RC Primary School

Headteacher: Mr Michael Scurr
 Howlett Hall Road, Newcastle upon Tyne,
 NE15 7HS
 0191 274 3430
 admin@stbedes.newcastle.sch.uk
 Type: **Voluntary aided (Roman Catholic)**
mixed primary
 Age range: **4-11**
 Published admission number: **30**
 Nursery at School: **No**
 Expected number on roll: 211
 Pupils normally transfer to: Sacred Heart (girls)
 or St Cuthbert's (boys) High School
 School number: **3762**

St Catherine's RC Primary School

Headteacher: Mr Michael Ewing
 Greystoke Gardens, Newcastle upon Tyne,
 NE2 1PS
 0191 232 6803
 admin@stcatherines.newcastle.sch.uk
 www.stcatherines.newcastle.sch.uk
 Type: **Voluntary Aided (Roman Catholic)**
mixed primary
 Age range: **3-11**
 Published admission number: **30**
 Nursery at School: **Yes**
 Expected number on roll excl nursery: 185
 Pupils normally transfer to: St Mary's RC
 School
 School number: **3778**

**St Cuthbert's RC Primary School
(Walbottle)**

Headteacher: Mrs Doreen King
 The Green, Walbottle, Newcastle upon Tyne,
 NE15 8JL
 0191 267 5956
 admin@stcuthbertsw.newcastle.sch.uk
 Type: **Voluntary Aided (Roman Catholic)**
mixed primary
 Age range: **4-11**
 Published admission number: **18**
 Nursery at School: **No**
 Expected number on roll: 124
 Pupils normally transfer to: Sacred Heart (girls)
 or St Cuthbert's (boys) High School
 School number: **3476**

St Charles' RC Primary School

Headteacher: Mrs Vicky Lindsay
 Regent Farm Road, Gosforth, Newcastle upon
 Tyne, NE3 3HE
 0191 285 2553
 admin@stcharles.newcastle.sch.uk
 www.stcharles.newcastle.sch.uk
 Type: **Voluntary Aided (Roman Catholic)**
mixed primary
 Age range: **4-11**
 Published admission number: **30**
 Nursery at School: **No**
 Expected number on roll: 210
 Pupils normally transfer to: Sacred Heart (girls)
 or St Cuthbert's (boys) High School
 School number: **3472**

St George's RC Primary School

Headteacher: Jennifer Gill
 Bells Close, Lemington, Newcastle upon Tyne,
 NE15 6XX
 0191 267 5677
 admin@stgeorges.newcastle.sch.uk
 www.stgeorges.newcastle.sch.uk
 Type: **Voluntary Aided (Roman Catholic)**
mixed primary
 Age range: **4-11**
 Published admission number: **20**
 Nursery at School: **No**
 Expected number on roll: 91
 Pupils normally transfer to: Sacred Heart (girls)
 or St Cuthbert's (boys) High School
 School number: **3475**

**St Cuthbert's Catholic Primary
School Kenton**

Headteacher: Mr Nick Conway
 Balmain Road, Kenton, Newcastle upon Tyne,
 NE3 3QR
 0191 286 0129
 admin@stcuthbertsk.newcastle.sch.uk
 www.stcuthbertsk.newcastle.sch.uk
 Type: **Voluntary Aided (Roman Catholic)**
mixed primary
 Age range: **3-11**
 Published admission number: **30**
 Nursery at School: **Yes**
 Expected number on roll excl nursery: 210
 Pupils normally transfer to: Sacred Heart (girls)
 or St Cuthbert's (boys) High School
 School number: **3765**

St John Vianney RC Primary School

Acting Headteacher: Mr Andrew Ramanandi
 Hillhead Road, West Denton, Newcastle upon
 Tyne, NE5 5AP
 0191 267 2233
 admin@stjohnvianney.newcastle.sch.uk
 Type: **Voluntary Aided (Roman Catholic)**
mixed primary
 Age range: **3-11**
 Published admission number: **30**
 Nursery at School: **Yes**
 Expected number on roll excl nursery: 212
 Pupils normally transfer to: Sacred Heart (girls)
 or St Cuthbert's (boys) High School
 School number: **3477**

St Joseph's RC Primary School

Headteacher: Miss Elaine Mathews
 318 Armstrong Road, Newcastle upon Tyne,
 NE15 6JB
 0191 273 9063
 admin@stjosephs.newcastle.sch.uk
 Type: **Voluntary Aided (Roman Catholic)
 mixed primary**
 Published admission number: **30**
 Age range: **3-11**
 Nursery at School: **Yes**
 Expected number on roll excl nursery: 168
 Pupils normally transfer to: Sacred Heart (girls)
 or St Cuthbert's (boys) High School
 School number: **3781**

St Lawrence's RC Primary School

Headteacher: Miss Bernadette Lamb
 Headlam Street, Newcastle upon Tyne,
 NE6 2JX
 0191 265 9881
 admin@stlawrences.newcastle.sch.uk
 www.stlawrences.newcastle.sch.uk
 Type: **Voluntary Aided (Roman Catholic)
 mixed primary**
 Age range: **3-11**
 Published admission number: **30**
 Nursery at School: **Yes**
 Expected number on roll excl nursery: 180
 Pupils normally transfer to: St Mary's RC
 School
 School number: **3792**

St Mark's RC Primary School

Headteacher: Ms Alison Miller
 Bardon Close, Newbiggin Hall,
 Newcastle upon Tyne, NE5 4BT
 0191 286 9349
 admin@stmarks.newcastle.sch.uk
 www.stmarks.newcastle.sch.uk
 Type: **Voluntary Aided (Roman Catholic)
 mixed primary**
 Published admission number: **30**
 Age range: **4-11**
 Nursery at School: **No**
 Expected number on roll excl nursery: 185
 Pupils normally transfer to: Sacred Heart (girls)
 or St Cuthbert's (boys) High School
 School number: **3474**

St Michael's RC Primary School

Headteacher: Mrs Margaret Kerridge
 Clumber Street North, Elswick,
 Newcastle upon Tyne, NE4 7RE
 0191 273 9383
 admin@stmichaels.newcastle.sch.uk
 www.stmichaels.newcastle.sch.uk
 Type: **Voluntary Aided (Roman Catholic)
 mixed primary**
 Age range: **3-11**
 Published admission number: **30**
 Nursery at School: **Yes**
 Expected number on roll excl nursery: 197
 Pupils normally transfer to: Sacred Heart (girls)
 or St Cuthbert's (boys) High School
 School number: **3811**

St Oswald's Catholic Primary School

Headteacher: Mrs Karen Holmes
 Hartford Road, Newcastle upon Tyne, NE3 5LE
 0191 285 2437
 admin@stoswalds.newcastle.sch.uk
 Type: **Voluntary Aided (Roman Catholic)
 mixed primary**
 Age range: **4-11**
 Published admission number: **30**
 Nursery at School: **No**
 Expected number on roll: 214
 Pupils normally transfer to: Sacred Heart (girls)
 or St Cuthbert's (boys) High School
 School number: **3473**

St Paul's C of E Primary School

Headteacher: Mrs Judith Sword
 Victoria Street, Newcastle upon Tyne, NE4 7JU
 0191 273 3667
 admin@stpauls.newcastle.sch.uk
 www.stpauls.newcastle.sch.uk
 Type: **Voluntary Aided (Church of England)
 mixed primary**
 Age range: **3-11**
 Published admission number: **35**
 Nursery at School: **Yes**
 Expected number on roll excl nursery: 240
 Pupils normally transfer to: Excelsior Academy
 School number: **3485**

St Teresa's Catholic Primary School

Acting Headteacher: Mrs Janet Purdy
Heaton Road, Heaton, Newcastle upon Tyne,
NE6 5HN

0191 265 5076

admin@stteresas.newcastle.sch.uk

www.stteresas.newcastle.org.uk

Type: **Voluntary Aided (Roman Catholic)
mixed primary**

Age range: **4-11**

Published admission number: **30**

Nursery at School: **No**

Expected number on roll: 222

Pupils normally transfer to: St Mary's RC
School

School number: **3835**

St Vincent's RC Primary School

Headteacher: Sister Josepha Matthews
Monkchester Road, Walker,
Newcastle upon Tyne, NE6 2TX

0191 265 5049

admin@stvincents.newcastle.sch.uk

www.stvincents.newcastle.sch.uk

Type: **Voluntary Aided (Roman Catholic)
mixed primary**

Age range: **4-11**

Published admission number: **30**

Nursery at School: **No**

Expected number on roll: 206

Pupils normally transfer to: St. Mary's RC
School

School number: **3842**

Application form for Reception 2011
Closing date: midnight, 15 January 2011

The best way to apply for a school place is online. Our online form is easy to use, safe and secure. Our web pages have lots of information about the different schools and tips for making your application. Apply online at www.newcastle.gov.uk/admissions

Alternatively, complete this paper application form for reception admissions in September 2011.

If you live in Newcastle, use this form to apply for a place in any state school including faith schools and schools in other authorities. You may **select up to four school preferences**. Listing more than one does not affect your chances of getting the first one. List the school you most want first.

Before listing your preferred schools, it is important that you read the information for parents in the booklet or on line. Consider the information on offers made in 2010. This will give you a realistic idea of your child's chances of getting a place. Visit the schools, consider travel arrangements and childcare.

We are unable to provide a receipt for paper applications. We will acknowledge online applications by return email.

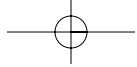
Do not submit a paper application if you have applied online.

Before you submit your application please ensure that:

- You have read and understood the admission guidance
- You have completed all the boxes on the form that are relevant to your application
- The information you have provided is accurate
- If you have ticked the 'medical need' box you have arranged to send the required evidence to the Admissions Team in the Civic Centre before the closing date
- If you are applying to a school for faith reasons you have ticked the 'faith' box and indicated your religion in the relevant box

If you apply to any school for medical reasons, you must send us supporting evidence from a professional involved with your child.

Include your child's full name and date of birth in any correspondence. Newcastle City Council cannot accept any responsibility for the loss of documents sent by post. We will only return documents if you enclose a stamped addressed envelope.



Please use black ink and write in block capitals.

Your child's details

Surname First name

Date of birth / / (day/month/year) Gender Boy Girl

Current address

.....

..... Postcode.....

What is your child's current school?

.....

Is your child in public care (looked after)?

Yes

No

If yes, which local authority looks after your child?.....

.....

Does your child have a Statement of Special Educational Need?

Yes

No

Are you a Service family or Crown Servant relocating to the area

Yes

No

(If yes then proof of relocation or a unit postal address will need to be submitted before the closing date)

Your details

Title (for example, Mr, Mrs, Miss).....

Surname First name

Current address (if different from child)

.....

..... Postcode.....

Home phone Business phone

Mobile phone.....

Email address (optional)

.....

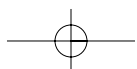
What is your relationship to the child? (for example, mother)

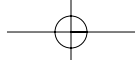
.....

Do you have parental responsibility for this child?

Yes

No





My first preference school is:

.....

Medical reason Yes No Faith reason Yes No

If you are applying to a school for faith reasons the school will contact you for evidence of your faith.

Please indicate if you have a faith: Roman Catholic Church of England

Other (please indicate which faith)

A brother or sister (sibling) will be at the school in September 2011 Yes No

Sibling's date of birth...../...../.....(If more than one, pick the one closest in age)

Sibling's surname First name

If you wish to provide any supporting information to support your school preference please give details below:

.....
.....
.....

My second preference school is:

.....

Medical reason Yes No Faith reason Yes No

If you are applying to a school for faith reasons the school will contact you for evidence of your faith.

Please indicate if you have a faith: Roman Catholic Church of England

Other (please indicate which faith)

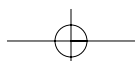
A brother or sister (sibling) will be at the school in September 2011 Yes No

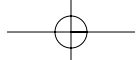
Sibling's date of birth...../...../.....(If more than one, pick the one closest in age)

Sibling's surname First name

If you wish to provide any supporting information to support your school preference please give details below:

.....
.....
.....





My third preference school is:

.....
Medical reason Yes No Faith reason Yes No

If you are applying to a school for faith reasons the school will contact you for evidence of your faith.

Please indicate if you have a faith: Roman Catholic Church of England
Other (please indicate which faith)

A brother or sister (sibling) will be at the school in September 2011 Yes No

Sibling's date of birth...../...../.....(If more than one, pick the one closest in age)

Sibling's surname First name

If you wish to provide any supporting information to support your school preference please give details below:

.....
.....
.....

My fourth preference school is:

.....
Medical reason Yes No Faith reason Yes No

If you are applying to a school for faith reasons the school will contact you for evidence of your faith.

Please indicate if you have a faith: Roman Catholic Church of England
Other (please indicate which faith)

A brother or sister (sibling) will be at the school in September 2011 Yes No

Sibling's date of birth...../...../.....(If more than one, pick the one closest in age)

Sibling's surname First name

If you wish to provide any supporting information to support your school preference please give details below:

.....
.....
.....

I confirm that the information on this form is true and accurate.
Parent or carer signature
Date...../...../.....

Return your application form and supporting evidence by 15 January 2011 to:
Admissions and Student Support, Children's Services, Newcastle City Council,
Room 308, Civic Centre, Newcastle upon Tyne NE1 8PU.

